



240*320 Resolution Ips Lcd Display With 262k 65k Color Saturation

Our Product Introduction

for more products please visit us on chenghaolcd.com

Basic Information

- Place of Origin: China, Shenzhen
- Brand Name: Chenghao Optoelectronic
- Certification: CE RoHS
- Model Number: CH200QV18B
- Minimum Order Quantity: 100 pcs
- Packaging Details: All the products are packed in right way to keep it safe. For small sizes of products we use tray + carton, For bigger sizes we use foam slot + carton. we also design packages according to customers' requirements
- Delivery Time: 7-15 working days
- Supply Ability: 300Kpcs/month

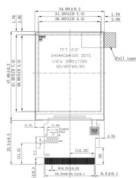


Product Specification

- Module Size: 34.6(W)×47.8(H)×2.0(T) Mm
- Contrast Ratio: 800:1
- Aspect Ratio: 4:3
- Resolution: 240*320
- Brightness: 1000 Cd/m2
- Connector: 50 Pins FPC
- Response Time: 16 Ms
- Size: 2.0 Inch
- Highlight: 240*320 resolution ips lcd display,
65k color saturation ips lcd display,
240*320 resolution display lcd ips



More Images



Product Description

Product Description:

The CH200QV18B 2.0 inch IPS LCD Display is designed with a 240*320 resolution and a 4:3 aspect ratio, with a 50 pins FPC connector. This small LCD has a TFT Lcd Panel , which makes it perfect for applications such as smart phones, hand-held devices, etc.

This IPS LCD Display is equipped with a 50 Pins FPC Connector that provides a reliable connection and efficient performance. Its small size and high resolution make it an ideal choice for a wide variety of applications. With its sharp display and wide viewing angles, this LCD display provides a clear and vivid image, making it the perfect solution for a variety of tasks.

The 2.0 inch IPS LCD Display is an ideal choice for those looking for a small LCD with a high resolution and a reliable connection. Its 50 pins FPC connector ensures an efficient performance, while its IPS/Transmissive/Normally Black display mode provides a clear and vivid image. This display is perfect for a variety of applications, including smart phones, hand-held devices, and more.

Features:

Product Name: IPS LCD Display
Operating Temperature: -20 ~ +70
Driver IC: ST7789
Viewing Angle: 85/85/85/85
Size: 2.0 Inch
Response Time: 16 Ms
Small LCD Screen
IPS TFT LCD Display
2 Inch LCD Display Module

Technical Parameters:

Parameter	Value
Color TFT Display	IPS LCD Display
Size	2.0 Inch
Brightness	1000 Cd/m2
Resolution	240*320
Driver IC	ST7789
Back Light	5 White LED In Parallel
Operating Temperature	-20 ~ +70
Response Time	16 Ms
Life Time	50000 H
Module size	34.6(W)×47.8(H)×2.0(T) Mm
Interface	SPI+RGB / MCU / RGB

Applications:

The **CH200QV18B** 2.0 inch IPS TFT LCD Display from **Chenghao Optoelectronic** is a high-quality LCD Display module made in **Shenzhen, China**. This product has been certified with **CE** and **RoHS** standards, and has a minimum order quantity of **1 pcs**. The product is packed safely in tray + carton for small sizes and foam slot + carton for bigger sizes. The delivery time is **7-15 working days**, and the supply ability is **300Kpcs/month**. The Viewing Area of this LCD display is **31.2(W)×41.4(H) mm**, and the Active Area is **30.6(W)×40.8(H) mm**. The Response Time of this LCD Display is **16 Ms**, and the Storage Temperature is **-30 ~ +80**.



Support and Services:

We provide technical support and service for IPS LCD Display products, including:

- * Sample testing assistance
- * Touch Panel Design Service
- * Troubleshooting assistance
- * Hardware repair and replacement
- * Customer service and support

Packing and Shipping:

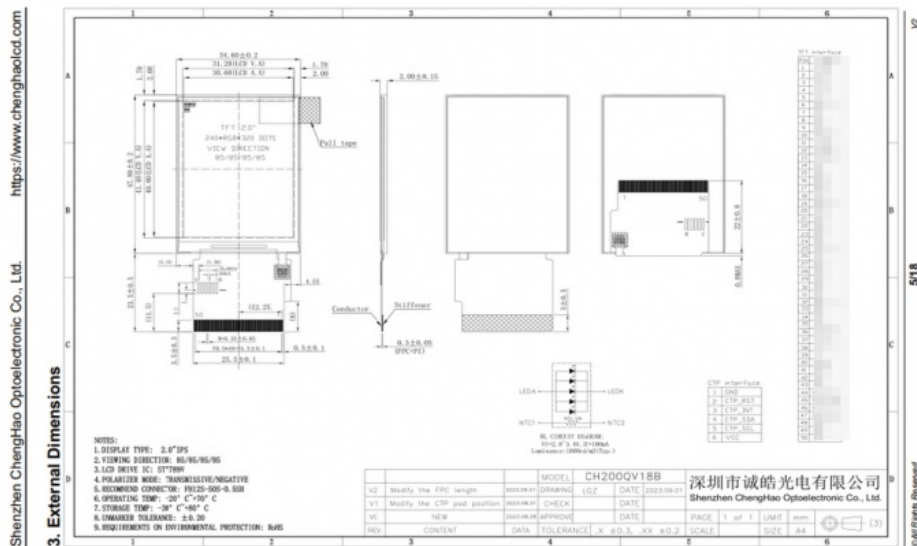
IPS LCD Display Packaging and Shipping:

The display will be packaged in a cardboard box with a cushioning material to protect it during shipping.

The box will be sealed with a strong adhesive tape.

The box will be labeled with the product name, model number, and other relevant information.

The box will be shipped via a reliable courier service.



Shenzhen ChengHao Optoelectronic Co., Ltd.



+86 755-27806536



add@chenghaolcm.com



chenghaolcd.com

7th floor, building C5, Hengfeng Industrial City, Hangcheng street, Bao'an District, Shenzhen