



St7789 2 Inch Ips Lcd Display 1000 Cd/M2 Brightness

Our Product Introduction

for more products please visit us on chenghaolcd.com

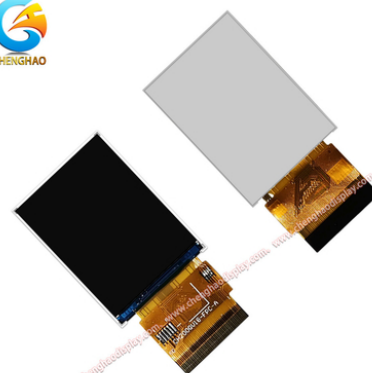
Basic Information

- Place of Origin: China, Shenzhen
- Brand Name: Chenghao Optoelectronic
- Certification: CE RoHS
- Model Number: CH200QV18B
- Minimum Order Quantity: 100 pcs
- Packaging Details: All the products are packed in right way to keep it safe. For small sizes of products we use tray + carton, For bigger sizes we use foam slot + carton. we also design packages according to customers' requirements
- Delivery Time: 7-15 working days
- Supply Ability: 300Kpcs/month

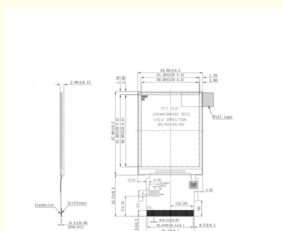


Product Specification

- Brightness: 1000 Cd/m2
- Color Saturation: 262K & 65K
- Connector: 50 Pins FPC
- Driver IC: ST7789
- Viewing Area: 31.2(W)x41.4(H) Mm
- Display Type: IPS TFT LCD
- Resolution: 240*320
- Display Mode: RGB Vertical Stripe
- Viewing Angle: 85/85/85/85
- Highlight: **st7789 ips lcd display,**
high brightness ips lcd display,
st7789 display lcd ips



More Images



Product Description

Product Description:

The ST7789 IPS LCD Display is a small but powerful LCD display that offers a wide range of features and performance capabilities. With its operating temperature of -20 to +70 degrees Celsius, it can be used in a variety of applications. This display features a Transmissive/normally black display mode, a 4:3 aspect ratio and a contrast ratio of 800:1. Furthermore, its viewing angle of 85/85/85/85 degrees allows for a clear, vibrant image even from a wide range of angles. The ST7789 LCD display is an ideal choice for a range of applications, from small embedded systems and portable devices to larger displays for industrial and commercial use.

Features:

Product Name: IPS LCD Display

Brightness: 1000 Cd/m²

Module size: 34.6(W)×47.8(H)×2.0(T) mm

Aspect Ratio: 4:3

Viewing Area: 31.2(W)×41.4(H) mm

Active Area: 30.6(W)×40.8(H) mm

LCD Display Factory

Color TFT Display

2 Inch LCD Display

Technical Parameters:

Display Type	IPS TFT LCD
Brightness	1000 Cd/m ²
Operating Temperature	-20 ~ +70
Size	2.0 Inch
Display mode	RGB Vertical Stripe
Connector	50 Pins FPC
Active area	30.6(W)×40.8(H) Mm
Response Time	16 Ms
Module size	34.6(W)×47.8(H)×2.0(T) Mm
Interface	SPI+RGB / MCU / RGB

Applications:

Chenghao Optoelectronic is a leading supplier of IPS LCD Displays. Its CH200QV18B model is designed to be highly reliable and efficient, featuring a 240x320 resolution, 85/85/85/85 viewing angle, -20 ~ +70 operating temperature, 34.6(W)×47.8(H)×2.0(T) Mm module size, SPI+RGB/MCU/RGB interface and ips/transmissive/normally black display mode. It has been certified with CE and RoHS, and it offers an impressive minimum order quantity of 1 pc. Quality packaging is assured, with small sizes of products being packed in tray + carton, and bigger sizes foam slot + carton. Delivery time is 7-15 working days, and the company has a monthly supply ability of 300Kpcs.

The CH200QV18B IPS LCD display is ideal for a wide variety of applications, including medical and industrial equipment, consumer electronics, automotive, security and surveillance, and POS/ATM systems. Its superior image quality and advanced features makes it a perfect fit for all types of projects requiring a reliable and robust display.



Support and Services:

IPS LCD Display provides technical support and services in the following areas:

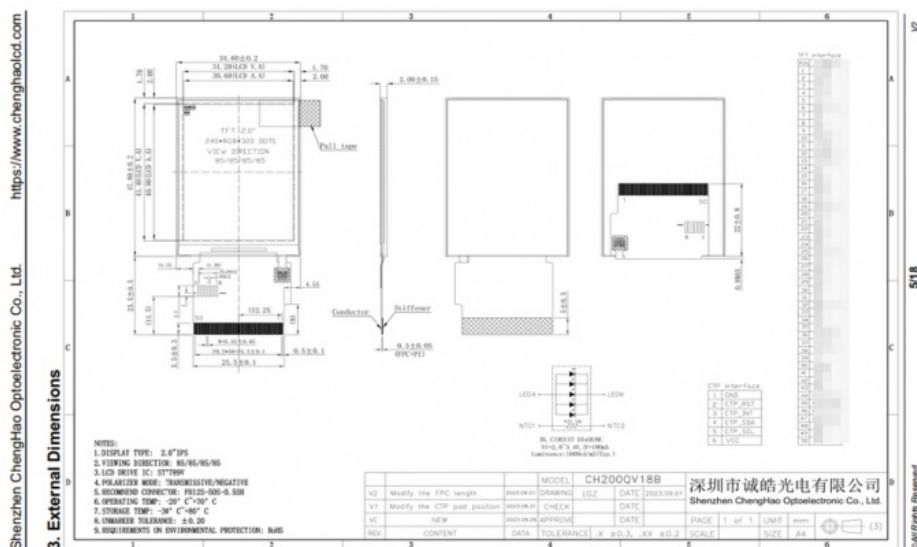
- * Debugging of IPS LCD Display
- * Troubleshooting and repair of hardware and software
- * Technical advice and assistance
- * Warranty service

Packing and Shipping:

Packaging and Shipping for IPS LCD Display

Our IPS LCD Displays are securely packaged with protective foam or bubble wrap inside a sturdy cardboard box or plastic container to ensure safe delivery. The box is then sealed with tape for additional protection. For international orders, the package is marked with the relevant customs information.

We use a selection of shipping services depending on the destination. We ship our products via USPS, DHL, FedEx, or UPS. We offer express delivery services for urgent orders.



FAQ:

Q&A about IPS LCD Display

Q1: What is the Brand Name of this product?

A1: The Brand Name of this product is Chenghao Optoelectronic.

Q2: What is the Model Number of this product?

A2: The Model Number of this product is CH200QV18B.

Q3: Where is this product made?

A3: This product is made in Shenzhen, China.

Q4: Does this product have any certifications?

A4: Yes, this product has CE and RoHS certifications.

Q5: How is the packaging of this product?

A5: All the products are packed in right way to keep it safe. For small sizes of products we use tray + carton, For bigger sizes we use foam slot + carton. We also design packages according to customers' requirements.





+86 755-27806536



add@chenghaolcm.com



chenghaolcd.com

7th floor, building C5, Hengfeng Industrial City, Hangcheng street, Bao'an District, Shenzhen