



## 900 Nits Capacitive Touch Industrial Lcd Display 5 Inch High Brightness With 40 Pins Fpc

### Our Product Introduction

for more products please visit us on [chenghaolcd.com](http://chenghaolcd.com)

#### Basic Information

- Place of Origin: China Shenzhen
- Brand Name: Chenghao Optoelectronic
- Certification: CE RoHS FCC
- Model Number: CH500WV05B-CT-PA
- Minimum Order Quantity: 100 pcs
- Packaging Details: All the products are packed in right way to keep it safe. For small sizes of products we use tray + carton, For bigger sizes we use foam slot + carton. we also design packages according to customers' requirements
- Delivery Time: 3~7 Days
- Payment Terms: TT or Others
- Supply Ability: 50000000 pcs/month



#### Product Specification

- Warranty: 12 Months
- Touch Type: Capacitive
- Size: 5 Inch
- Lcm Interface: SPI
- Lifespan: 50000 H
- Touch Panel Interface: I2C
- Operating Temperature: -20°C ~ +70°C
- Lumince: 900 Nits
- Highlight: 900 nits industrial lcd display, capacitive touch industrial lcd display, 5 inch industrial flat panel monitor



#### More Images





## Product Description

### Product Description:

This Industrial LCD Display is designed to meet the needs of various industrial applications. With a 5-inch screen size and a high resolution of 800\*480 dots, it is capable of providing sunlight readable display and high contrast ratio of 800, making it ideal for medical touch display. The response time of this display is 16 Ms, making it quick and responsive enough to meet the demands of industrial environment.

Module No	CH500WV05B-CT-PA	--
Display Mode	IPS/Transmission/Normally Black	--
Resolution	800*480	dots
Viewing Direction	80/80/80/80	--
TFT Interface	SPI	--
TP Type	Capacitive	--
TP Interface	I2C	--

### Features:

This product features a support SPI interface with a PCB control board for maximum usability. Furthermore, this product also provides a multi-touch functionality that can improve user experience. Moreover, the manufacturer has also included a IPS full view angle for different visual needs and sunlight readable technologies to make it possible for outdoor enthusiasts to utilize all functions. Lastly, the product supports a wide temperature environment, ensuring reliability of the product.

### Applications:

Industrial LCD Display is a perfect choice for users who require a wide range of applications in a variety of operating environments. Chenghao Optoelectronic CH500WV05B-CT-PA is a reliable industrial LCD display with CE,RoHS,FCC certification, no MOQ and 50000000 pcs/month supply ability. It comes with 800\*480 dots resolution, SPI interface, capacitive touch type, and -30°C ~ +80°C storage temperature and -20°C ~ +70°C operating temperature. Furthermore, all the products are packed in right way to keep it safe. For small sizes of products, we use tray + carton, and for bigger sizes we use foam slot + carton. We also design packages according to customers' requirements. And delivery time is within 3~7 days with TT or other payment terms. Chenghao Optoelectronic Industrial LCD Display is also sunlight readable and it is a perfect choice for industrial touch screen and industrial lcd monitor. It is widely used in medical equipment, industrial equipment, POS, kiosk, self-service terminal, ATM machine, and more.



### Support and Services:

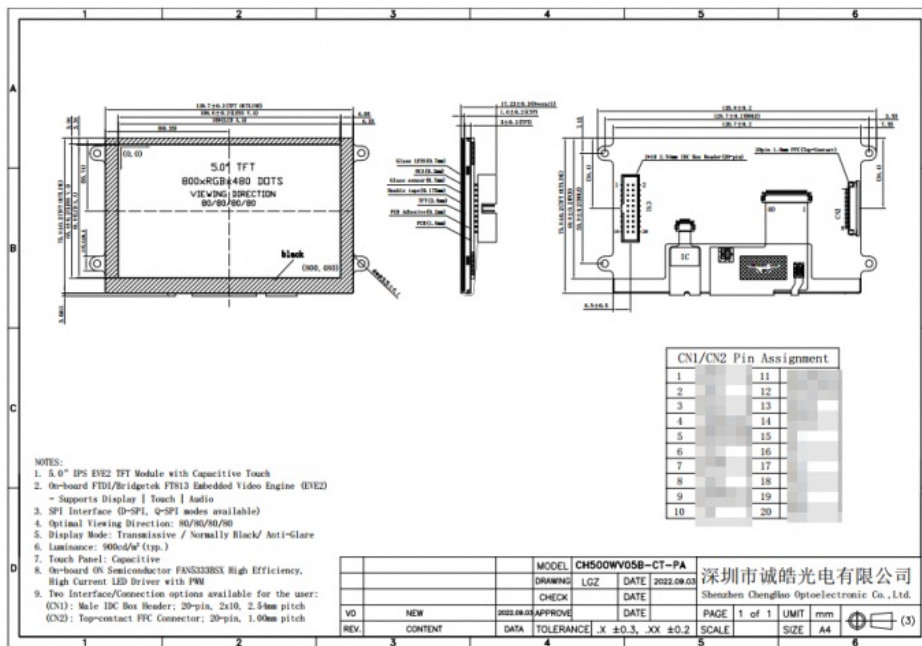
Industrial LCD Display technical support and services include:

- 24/7 customer service
- Product troubleshooting and repair
- Software updates and upgrades
- Compatibility testing with other hardware and software
- Helpful and friendly advice on product usage
- Warranty and maintenance services

## Packing and Shipping:

### Packaging and Shipping of Industrial LCD Display:

The industrial LCD display will be packed in a standard box with enough foam for maximum protection and cushioning during shipping. The box is then sealed with tape and labeled with the corresponding shipping information. The package is then shipped according to the customers' required shipping method.



## FAQ:

Q1: What is the brand name of this Industrial LCD Display?

A1: The brand name of this Industrial LCD Display is Chenghao Optoelectronic.

Q2: What is the model number of this Industrial LCD Display?

A2: The model number of this Industrial LCD Display is CH500WV05B-CT-PA.

Q3: Where is this Industrial LCD Display made?

A3: This Industrial LCD Display is made in China, Shenzhen.

Q4: What certifications does this Industrial LCD Display have?

A4: This Industrial LCD Display has CE, RoHS and FCC certifications.

Q5: How is this Industrial LCD Display packaged?

A5: This Industrial LCD Display is packaged in either tray + carton or foam slot + carton, depending on the size. We also design packages according to customers' requirements.



Shenzhen ChengHao Optoelectronic Co., Ltd.



+86 755-27806536



add@chenghaolcm.com



chenghaolcd.com

7th floor, building C5, Hengfeng Industrial City, Hangcheng street, Bao'an District, Shenzhen