



## Car 10.3 Inch Lcd Display Module 900 Nits High Brightness White Led Backlight

### Our Product Introduction

for more products please visit us on [chenghaolcd.com](http://chenghaolcd.com)

#### Basic Information

- Place of Origin: China Shenzhen
- Brand Name: Chenghao Optoelectronic
- Certification: CE RoHS FCC
- Model Number: CH103WX01A
- Minimum Order Quantity: 100 pcs
- Packaging Details: All the products are packed in right way to keep it safe. For small sizes of products we use tray + carton, For bigger sizes we use foam slot + carton. we also design packages according to customers' requirements
- Delivery Time: 3~7 Days
- Payment Terms: TT or Others
- Supply Ability: 50000000 pcs/month



#### Product Specification

- Display Life Span: 50000H
- Display Storage Temperature: -40 °C ~ +90°C
- FPC Pin Number: 60 Pins
- Active Area: 243.84\*91.44 Mm
- Display Color: Color
- Display Operating Temperature: -30 °C ~ +85°C
- Display Backlight: White LED
- Display Size: 10.3 Inch
- Highlight: 10.3 inch lcd display module,  
900 nits lcd display module,  
led backlight lcd screen module



#### More Images





## Product Description

### Product Description:

This LCD Display Module is designed and manufactured by a professional LCD factory, featuring a color LCD screen with a viewing area of 244.84\*92.44 mm. The display response time is 16 ms and it has a 50000H lifespan with an 800:1 display contrast ratio. It offers a wide viewing angle of 85/85/85/85. This LCD Display Module is the perfect choice for any application that requires a reliable and clear display.

Part No	CH103WX03A#	--
Resolutions	1280x480	dots
Response Time	16	ms
Contrast	800	--
View angle	free viewing angle	--
MOQ	1	Piece
Manufacturer	Chenghao Optoelectronic	--
Warranty	1	Year

### Features:

Product Name: LCD Display Module

Display Operating Temperature: -30 °C ~ +85°C

Display Mode: Transmissive/Normally Black

Display Contrast Ratio: 800:1

Display Brightness: 900 Cd/m2

Lcm Outline: 265.2\*109.85\*7 Mm

1280x480 LCD

IPS Display

Wide Viewing Angle

### Applications:

Chenghao Optoelectronic's 10.3 inch CH103WX01A Color LCD Display Module is the perfect solution for a wide range of applications. With its large size and widescreen ratio, it provides a high-resolution display with a brightness of up to 900 cd/m2. Boasting a total of 60 FPC pins and a wide viewing angle of 85/85/85/85, the CH103WX01A is the ideal display solution for a variety of applications. With a minimum order quantity of 1 MOQ, the CH103WX01A is easily purchasable and provides the perfect display for any product. The product is also CE, RoHS, and FCC certified, guaranteeing its quality. The product is also well-packaged to ensure its safety, with either tray plus carton or foam slots plus carton depending on the size. Delivery typically takes 3-7 days and the product is capable of being shipped worldwide. With its large production capacity of up to 50 million pieces a month, the CH103WX01A is the perfect solution for the display of devices such as color LCD screens, color LCD displays, and widescreen LCD screens.



### Support and Services:

We provide technical support and service for our LCD Display Module. Our customer service team is available 24/7 to answer any questions you may have about the product. We also offer free troubleshooting and installation support. If you need any help, simply contact us and we'll be happy to help you out.

### Packing and Shipping:

The packaging and shipping of LCD Display Module includes the following:

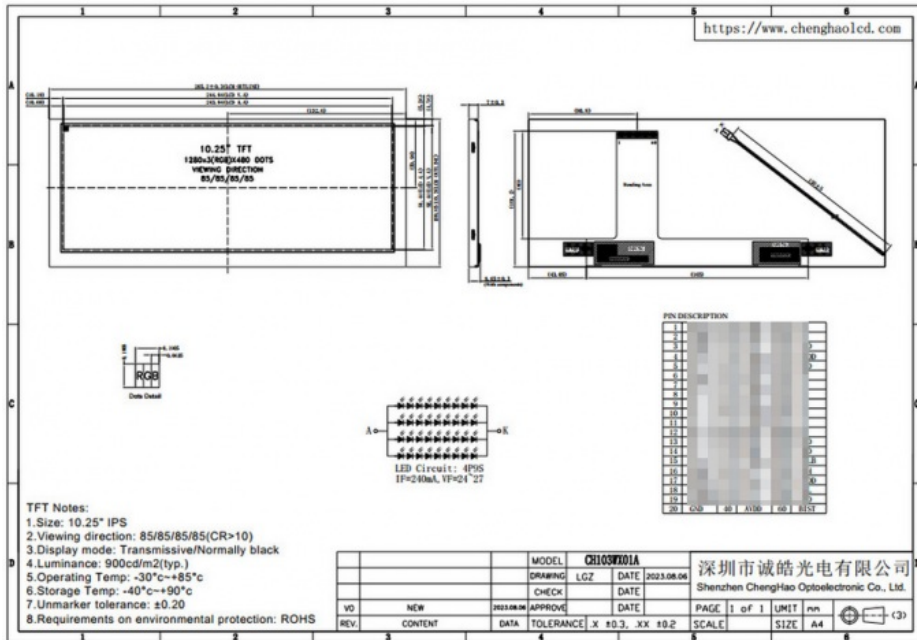
Securely pack the LCD display module with bubble wrap.

Place the wrapped module in a cardboard box.

Close the box securely with packing tape.

Label the box with the shipment details.

Send the package to its destination.



### FAQ:

Q1: What is the brand name of the LCD Display Module?

A1: The brand name of the LCD Display Module is Chenghao Optoelectronic.

Q2: What is the model number of the LCD Display Module?

A2: The model number of the LCD Display Module is CH103WX01A.

Q3: Where is LCD Display Module made?

A3: The LCD Display Module is made in China, Shenzhen.

Q4: What certifications does the LCD Display Module have?

A4: The LCD Display Module has CE, RoHS, and FCC certifications.

Q5: What is the minimum order quantity of the LCD Display Module?

A5: There is no minimum order quantity for the LCD Display Module.



**Shenzhen ChengHao Optoelectronic Co., Ltd.**



+86 755-27806536



add@chenghaolcm.com



chenghaolcd.com

7th floor, building C5, Hengfeng Industrial City, Hangcheng street, Bao'an District, Shenzhen