



## Sunlight Readable Car Lcd Display Module 10.3 Inch 1280\*480 Resolution

### Our Product Introduction

for more products please visit us on [chenghaolcd.com](http://chenghaolcd.com)

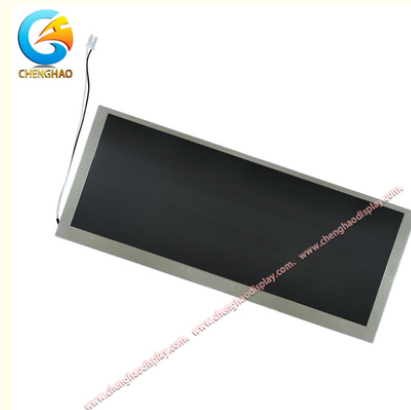
#### Basic Information

- Place of Origin: China Shenzhen
- Brand Name: Chenghao Optoelectronic
- Certification: CE RoHS FCC
- Model Number: CH103WX01A
- Minimum Order Quantity: 100 pcs
- Packaging Details: All the products are packed in right way to keep it safe. For small sizes of products we use tray + carton, For bigger sizes we use foam slot + carton. we also design packages according to customers' requirements
- Delivery Time: 3~7 Days
- Payment Terms: TT or Others
- Supply Ability: 50000000 pcs/month



#### Product Specification

- Display Brightness: 900 Cd/m2
- Display Contrast Ratio: 800:1
- Viewing Area: 244.84\*92.44 Mm
- FPC Pin Number: 60 Pins
- Display Certification: CE RoHS
- Active Area: 243.84\*91.44 Mm
- Lcm Outline: 265.2\*109.85\*7 Mm
- Display Color: Color
- Resolution: 1280\*480
- Screen Size: 10.3 Inch
- Highlight: sunlight readable lcd display module, 1280\*480 resolution lcd display module, 1280x480 resolution lcd screen module



#### More Images





## Product Description

### Product Description:

This LCD Display Module is a color lcd display with a 243.84\*91.44 mm active area and a 244.84\*92.44 mm viewing area. It features a 800:1 display contrast ratio, 16 ms display response time and 85/85/85/85 display viewing angle. This tft display screen is perfect for all kinds of applications.

Module No	CH103WX01A	--
Display Mode	Transmissive/IPS/Normally Black	--
Viewing Angle	85/85/85/85	Degree
Luminance	900	cd/m2
Color	16	M
Contrast	800:1	
Manufacturer	Chenghao Optoelectronic	--
Place of Shipment	China Shenzhen	--

### Features:

Product Name: LCD Display Module

LCM Outline: 265.2\*109.85\*7 mm

Display Size: 10.3 inch

Display Technology: TFT LCD Screen

Display Storage Temperature: -40 °C ~ +90°C

Display Certification: CE,RoHS

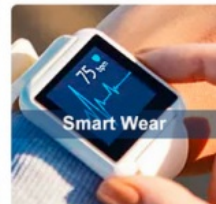
Display Color: Color

### Applications:

Application of Chenghao Optoelectronic CH103WX01A 10.3 Inch 800:1 LCD Display Module

Chenghao Optoelectronic CH103WX01A 10.3 Inch 800:1 LCD Display Module is one of the most popular products with a wide range of applications. It is widely used in smart home display screens, car lcd displays, Medical equipment color displays, Industrial control digital displays, and other applications. This product has a display contrast ratio of 800:1, a display resolution of 1280\*480 dots, and a display brightness of 900 Cd/m2. Its display storage temperature is -40°C~+90°C. It has CE, RoHS, and FCC certifications, no MOQ requirement, and a supply ability of 50000000 pcs/month. All the products are packed in the right way to keep them safe.

The packages for small sizes of products are tray + carton, while packages for bigger sizes are foam slot + carton. Moreover, customers can also design their own packages according to their requirements. In addition, Chenghao Optoelectronic CH103WX01A 10.3 Inch 800:1 LCD Display Module has a fast delivery time of 3~7 days, and customers can pay for the product by T/T or other payment terms.



### Support and Services:

Technical support and service for LCD Display Module include:

24/7 telephone and online support

Free software updates

On-site maintenance and repair

Replacement parts

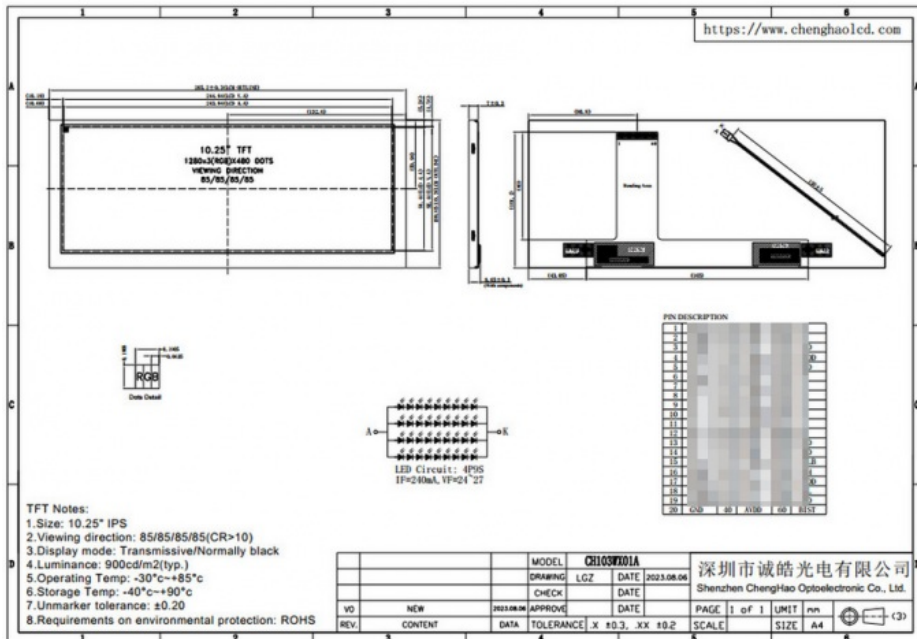
Access to product documentation

## Packing and Shipping:

### Packaging and Shipping

The LCD Display Module must be packaged securely to ensure that it is not damaged during transit. The package should include the LCD Display Module and any required accessories, along with detailed instructions for use. The package should be sealed and labeled with the appropriate shipping information. The package should also include a packing list that clearly states the contents, quantity, and destination.

The LCD Display Module should be shipped with a reliable carrier such as FedEx or UPS. The package should be tracked and insured for the full value of the shipment. The package should be clearly labeled with the appropriate shipping information, including the destination address, return address, and contact information.



## FAQ:

### Q & A

What brand is the LCD Display Module?

The LCD Display Module brand is Chenghao Optoelectronic.

What is the Model Number of the LCD Display Module?

The Model Number of the LCD Display Module is CH103WX01A.

Where is the LCD Display Module produced?

The LCD Display Module is produced in China, Shenzhen.

What certifications does the LCD Display Module have?

The LCD Display Module has CE, RoHS and FCC certifications.

What is the minimum order quantity for the LCD Display Module?

There is no minimum order quantity for the LCD Display Module.



**Shenzhen ChengHao Optoelectronic Co., Ltd.**



+86 755-27806536



add@chenghaolcm.com



chenghaolcd.com

7th floor, building C5, Hengfeng Industrial City, Hangcheng street, Bao'an District, Shenzhen