



10.25 Inch Tft Lcd Module All Viewing Angle 1280x480 Pixels CE RoHS Certifications

Our Product Introduction

for more products please visit us on chenghaolcd.com

Basic Information

- Place of Origin: China Shenzhen
- Brand Name: Chenghao Optoelectronic
- Certification: CE RoHS FCC
- Model Number: CH103WX01A
- Minimum Order Quantity: 100 pcs
- Packaging Details: All the products are packed in right way to keep it safe. For small sizes of products we use tray + carton, For bigger sizes we use foam slot + carton. we also design packages according to customers' requirements
- Delivery Time: 3~7 Days
- Payment Terms: TT or Others
- Supply Ability: 50000000 pcs/month



Product Specification

- Display Screen Size: 10.25 Inch
- Viewing Direction: All Viewing Angle
- Display Type: TFT LCD
- Display Contrast Ratio: 800:1
- Display Response Time: 16 Ms
- Display Brightness: 900 Cd/m2
- Viewing Area: 244.84*92.44 Mm
- Active Area: 243.84*91.44 Mm
- Highlight: 10.25 inch tft lcd module,
1280x480 tft lcd module,
ce rohs lcd screen module



More Images





Product Description

Product Description:

LCD Display Module

Our LCD Display Module is a car TFT LCD module developed and manufactured by a professional LCD factory. It has a wide operating temperature range of -30 °C to +85°C, and has obtained CE and RoHS certifications. It is a TFT LCD module with a viewing area of 244.84*92.44 Mm. The response time of this product is 16 Ms. Our LCD Display Module is widely used in automotive, medical, consumer and industrial applications.

Our LCD Display Module is designed with a high level of integration, excellent image quality and low power consumption. It has an integrated touch panel and allows flexible customization. The product has excellent mechanical strength and high temperature resistance. It is easy to install and maintain, and has excellent performance in various harsh environments.

Our LCD Display Module is a reliable and cost-effective solution for various applications. It is widely used in automotive, medical, consumer and industrial applications. It is highly reliable and has a long service life. It is a great choice for any application that requires a high-quality LCD display.

Part No	CH103WX01A
Display Mode	Transmission/Normally Black
Number of dots	1280x480
Viewing Angle	85/85/85/85
Backlight Luminance	900 nits
Display Screen Size	10.25 inch
Color	16.7 M

Features:

Product Name: LCD Display Module

Display Contrast Ratio: 800:1

Viewing Area: 244.84*92.44 Mm

Display Life Span: 50000H

Display Backlight: White LED

Display Type: TFT LCD

Car LCD Module

Color TFT Screen

10.3 Inch Display

Applications:

Chenghao Optoelectronic's CH103WX01A LCD Display Module is a popular choice for many applications, ranging from consumer electronics to industrial equipment. This LCD module is designed for reliable performance and superior image quality, featuring an IPS display, a 265.2*109.85*7 mm outline, a transmissive/normally black display mode, and a 16 ms response time. It is equipped with a 60-pin FPC, and a -30°C ~ +85°C operating temperature range, making it ideal for car lcd display, lcd monitor, and tft lcd display applications. This LCD module is manufactured in a reliable LCD factory and is certified with CE, RoHS, and FCC, with no minimum order quantity required. It can be delivered within 3-7 days and payment can be made via TT or other methods. With a high supply ability of 50000000 pcs/month, this LCD module is packed in a safe way with tray + carton for small sizes and foam slot + carton for bigger sizes, and can be customized according to customers' requirements.



Support and Services:

Technical Support and Service for LCD Display Module

Provide technical support for installation, operation and maintenance of LCD display module.

Provide professional advice on product applications and usage.

Provide basic technical training and operational guidance.

Provide timely response to customer service requests.

Provide on-site technical support and repairs as necessary.

Packing and Shipping:

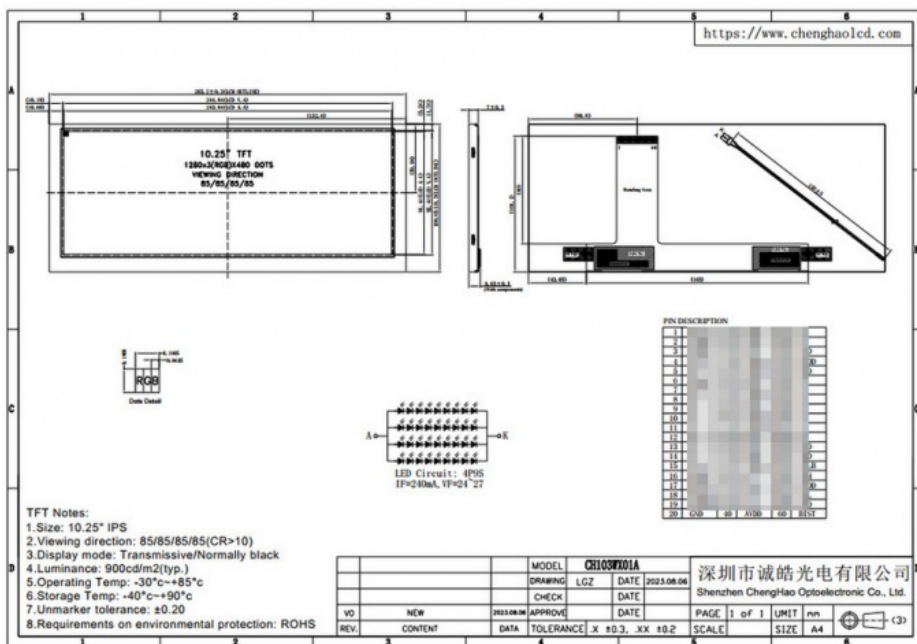
Packaging and Shipping for LCD Display Module

The LCD Display Module will be shipped in a cardboard box filled with foam to ensure the safety of the product during shipping. The box should be clearly labeled with the product name and a shipping address.

The box should be sealed with a strong tape to prevent any damage during shipment. The package should also be labeled with a tracking number.

The LCD Display Module should be packed in a double-box, with the inner box containing the product and the outer box containing the product along with any extra padding or cushioning material.

All packages should be shipped with a reliable and trusted courier service. The shipper should provide a tracking number and insurance for the package.



FAQ:

Q: What is the Brand Name of your LCD Display Module?

A: The Brand Name of our LCD Display Module is Chenghao Optoelectronic.

Q: What is the Model Number of your LCD Display Module?

A: The Model Number of our LCD Display Module is CH103WX01A.

Q: Where is your LCD Display Module made?

A: Our LCD Display Module is made in China, Shenzhen.

Q: What certifications does your LCD Display Module have?

A: Our LCD Display Module has CE, RoHS, and FCC certifications.

Q: What is your LCD Display Module's minimum order quantity?

A: We have no minimum order quantity for our LCD Display Module.



Shenzhen ChengHao Optoelectronic Co., Ltd.



+86 755-27806536



add@chenghaolcm.com



chenghaolcd.com

7th floor, building C5, Hengfeng Industrial City, Hangcheng street, Bao'an District, Shenzhen