

1280*480 Dots Widescreen I2c Lcd Display Module 10.3 Inch 60 Pins Fpc High Brightness

Our Product Introduction

for more products please visit us on chenghaolcd.com

Basic Information

- Place of Origin: China Shenzhen
- Brand Name: Chenghao Optoelectronic
- Certification: CE RoHS FCC
- Model Number: CH103WX01A
- Minimum Order Quantity: 100 pcs
- Packaging Details: All the products are packed in right way to keep it safe. For small sizes of products we use tray + carton, For bigger sizes we use foam slot + carton. we also design packages according to customers' requirements
- Delivery Time: 3~7 Days
- Payment Terms: TT or Others
- Supply Ability: 50000000 pcs/month



Product Specification

- Display Certification: CE RoHS
- Resolution: 1280*480 Dots
- FPC Pin Number: 60 Pins
- Display Type: TFT LCD
- Screen Size: 10.3 Inch
- Display Color: Color
- Display Size: 10.3 Inch
- Active Area: 243.84*91.44 Mm
- Highlight: high brightness i2c lcd display module, widescreen i2c lcd display module, 1280*480 dots lcd screen module



More Images



Product Description

Product Description:

Our **LCD Display Module** is designed and manufactured by a professional **TFT Display Manufacturer** with advanced technology. This **10.3 inch display** has a wide range of features, such as storage temperature from -40 °C to +90°C, operating temperature from -30 °C to +85°C, viewing angle up to 85/85/85/85, response time of 16 Ms, and transmissive/normally black display mode. With high quality components and strict quality control, this module offers superior performance and reliability.

Module No	CH103WX01A
Resolution	1280*480 dots
Viewing Direction	85/85/85/85
Backlight Brightness	900 cd/m2
Operating Temp	-35 ~ +85
Storage Temp	-40 ~ +90
Screen Size	10.25 inch

Features:

Product Name: LCD Display Module

Display Contrast Ratio: 800:1

Display Viewing Angle: 85/85/85/85

Operating Temp: -30 ~ +85

Storage Temp: -40 ~ +90

Display Mode: Transmission/Normally Black/IPS

High Brightness: 900 cd/m2

Display Response Time: 16 Ms

Keywords: TFT LCD Module, Color LCD Display, Car LCD Display, LCD Display Module

Applications:

Chenghao Optoelectronic CH103WX01A 10.3 inch LCD Display Module

Chenghao Optoelectronic CH103WX01A 10.3 inch LCD Display Module is a color TFT screen that offers high resolution and wide viewing angle. With a display size of 10.3 inches, it has a response time of 16 ms and a brightness of 900 cd/m2, making it ideal for applications requiring a fast response and vivid colors. The active area is 243.84*91.44 mm and the display has obtained CE, RoHS and FCC certifications. It is a perfect solution for many applications such as industrial automation, medical equipment, digital signage, HMI, and consumer electronics.



The CH103WX01A is available with no minimum order quantity and can be customized to meet your specific needs. It is supplied with a robust packaging to ensure its safety during delivery and a variety of payment terms are accepted, including TT and other methods. With a monthly production capacity of up to 50,000,000 pieces, you can be sure to receive your product in a timely manner.

Support and Services:

LCD Display Module Technical Support and Service

We provide technical support and service for our LCD Display Module. Our team of technical experts are available to answer any of your questions or provide assistance with setup and installation. We also have resources available online to help you troubleshoot any issues you may encounter. Our technical support team is available 24/7 and can be reached by phone, email or live chat. We strive to provide the best customer service and are committed to resolving any issues you may have quickly and effectively.

We also offer extended warranties and maintenance plans to provide additional peace of mind when using our LCD Display Module. Our knowledgeable customer service team can help you decide which plan is right for you.

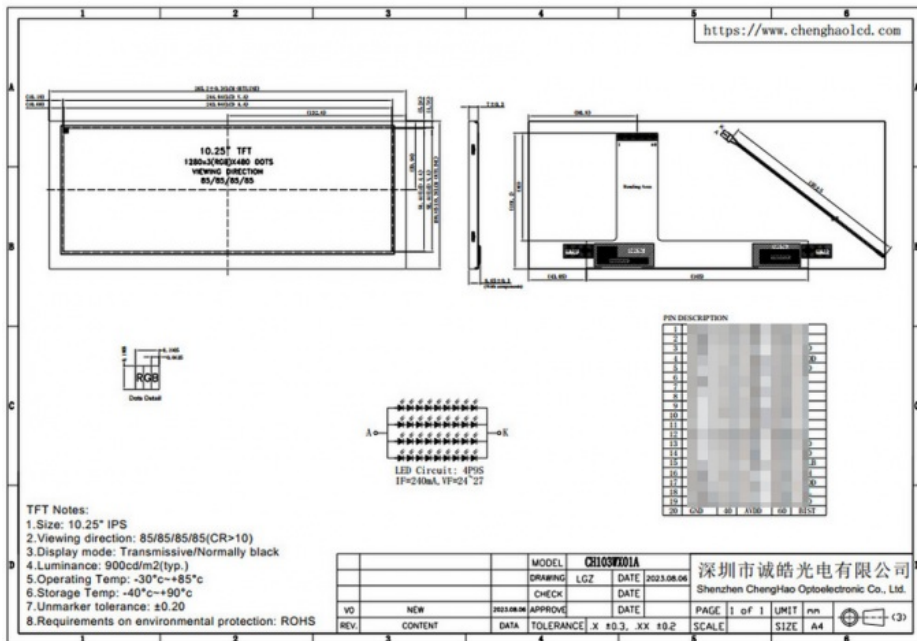
Packing and Shipping:

Packaging and Shipping for LCD Display Module:

Package the LCD Display Module in a static-proof bag

Place the static-proof bag in a cardboard box with sufficient cushioning material

Ship the package using reliable and trackable shipping service



FAQ:

Q1: What is the Brand Name of this LCD Display Module?

A1: The Brand Name of this LCD Display Module is Chenghao Optoelectronic.

Q2: What is the Model Number of this product?

A2: The Model Number of this product is CH103WX01A.

Q3: Where is this product from?

A3: This product is from Shenzhen, China.

Q4: What certifications does this product have?

A4: This product has CE, RoHS, and FCC certifications.

Q5: What is the minimum order quantity for this product?

A5: There is no minimum order quantity for this product.



Shenzhen ChengHao Optoelectronic Co., Ltd.



+86 755-27806536



add@chenghaolcm.com



chenghaolcd.com

7th floor, building C5, Hengfeng Industrial City, Hangcheng street, Bao'an District, Shenzhen