



50 Pins Monochrome LCD Panel FPC 1/4 Duty 1/3 Bias Drive Method With Green Backlight

Our Product Introduction

for more products please visit us on chenghaolcd.com

Basic Information

- Place of Origin: Shenzhen, China
- Brand Name: Chenghao Optoelectronic
- Certification: CE / RoHS / FCC
- Model Number: CH31X4T01F
- Minimum Order Quantity: 100 pcs
- Packaging Details: All the products are packed in right way to keep it safe. For small sizes of products we use tray + carton, For bigger sizes we use foam slot + carton. we also design packages according to customers' requirements.
- Delivery Time: 3~5 working days
- Payment Terms: TT or negotiation
- Supply Ability: 5000K Pcs/Month



Product Specification

- Connector: FPC
- FPC Pin Number: 50 Pins
- Viewing Area: 52.2*91.1 Mm
- Viewing Direction: 12 O'clock
- Response Time: 16 Ms
- Lcd Size: 56.2*99.05 Mm
- Module Size: 67.5*100.4*9.7 Mm
- Drive Method: 1/4 Duty 1/3 Bias
- Highlight: 50 Pins Monochrome LCD Panel , Monochrome LCD Panel With Green Backlight



More Images





Product Description

Product Description:

Monochrome LCD Panel 50 Pins FPC 1/4 Duty 1/3 Bias Drive Method with Green Backlight

Our Monochrome LCD Display module provides excellent viewing clarity and maximum visibility with sharp color contrast and wide viewing angles. This 56.2*99.05mm module offers a 52.2*91.1mm viewing area with a 67.5*100.4*9.7mm module size and 12 O'clock viewing direction. With a brightness of 150 Cd/m², it is the perfect choice for a wide variety of applications. This monochrome LCD module ensures superior image clarity and sharpness with vivid, lifelike colors. It provides excellent visibility in a wide range of lighting conditions and can be used in any environment. The monochrome LCD display offers superior performance and reliability in a variety of applications, such as industrial control, medical equipment, automotive and consumer electronics. With its low power consumption and high resolution, this monochrome LCD module is an ideal choice for any application.

Features:

Product Name: Monochrome LCD Display

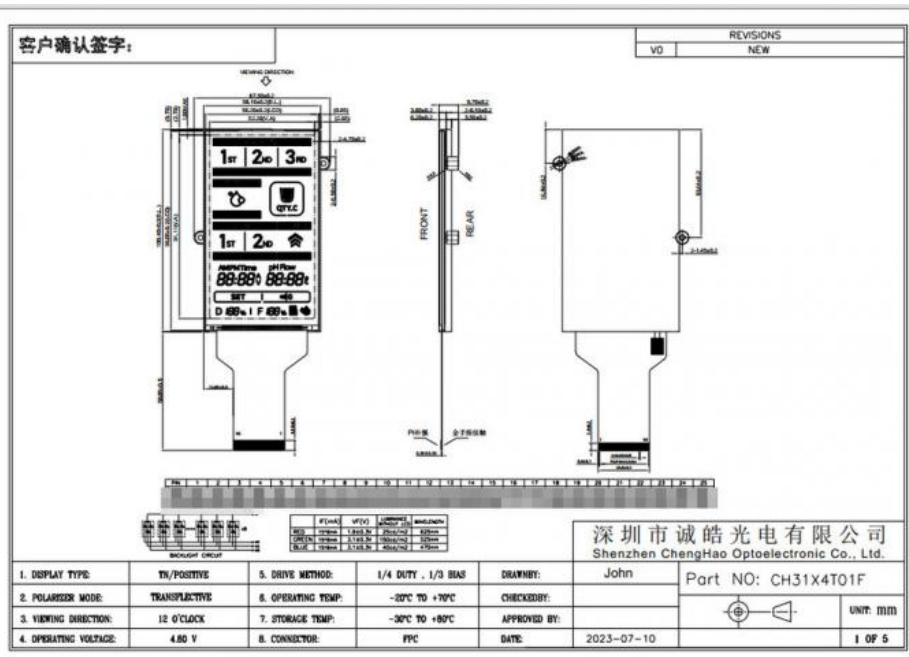
Display Type: TN/Positive

Viewing Direction: 12 O'clock

Operating Temperature: -20 To +70

Storage Temperature: -30 To +80

Drive Method: 1/4 Duty 1/3 Bias



Technical Parameters:

Parameter	Value
Module Size	67.5*100.4*9.7 Mm
FPC Pin Number	50 Pins
Brightness	150 Cd/m2
Display Color	Red & Blue & Green & White ...
Response Time	16 Ms

Storage Temperature	-30 To +80
Polarizer Mode	Transflective
Display Type	TN/Positive
Lcd Size	56.2*99.05 Mm
Viewing Direction	12 O'clock

Applications:

The Monochrome LCD Display from Chenghao Optoelectronic offers a perfect solution for various applications. This display module features a TN/Positive type with a 56.2*99.05 mm size and a high resolution of up to 1024*768. With a low operating voltage of 4.8V, the LCD panel is suitable for various embedded system designs. It also has an operating temperature range of -20 to +70, and is certified by CE / RoHS / FCC.

The Monochrome LCD Display is designed with FPC connector for easy connection and installation. It is widely used in industrial and medical control fields, such as medical equipment, measuring equipment and instrument, etc. The minimum order quantity for this product is 1 Pcs, and the delivery time is 3~5 working days. The product comes with a safe packaging, which includes tray + carton for small sizes of products and foam slot + carton for bigger sizes. The supply ability of this product reaches up to 5000K Pcs/Month. Payment terms can be negotiated, and custom packaging is available upon request.

The Monochrome LCD Display from Chenghao Optoelectronic features a low power consumption, high contrast ratio and wide operating temperature range and is suitable for various application scenarios. It is a perfect solution for industrial and medical control fields.



Fiscal Products



Instrumentation Products



Smart Home Products

Support and Services:

Technical Support and Service for Monochrome LCD Display

We provide technical support and services for our Monochrome LCD Display. Our team of experts can help you with any technical questions or issues you may have regarding the product. We are available 24/7 to answer your questions and provide assistance.

We also offer a variety of services to help you get the most out of your Monochrome LCD Display. Our team can provide installation services, troubleshooting assistance, and even custom configurations to meet your needs.

If you have any questions or need assistance with your Monochrome LCD Display, please don't hesitate to contact us. We are here to help.

Packing and Shipping:

Packaging and Shipping for Monochrome LCD Display

The Monochrome LCD Display will be packaged with the following materials:

Anti-static bag

Wrapping paper

Bubble wrap

Box

The Monochrome LCD Display will be shipped using a reliable carrier.

FAQ:

Q&A on Monochrome LCD Display

Q: What is the Brand Name of Monochrome LCD Display? **A:** The Brand Name of the Monochrome LCD Display is Chenghao Optoelectronic.

Q: What is the Model Number of Monochrome LCD Display? **A:** The Model Number of the Monochrome LCD Display is CH31X4T01F.

Q: Where is the Monochrome LCD Display made? **A:** The Monochrome LCD Display is made in Shenzhen, China.

Q: Are the Monochrome LCD Displays certified? **A:** Yes, the Monochrome LCD Display is certified by CE / RoHS / FCC.

Q: What's the minimum order quantity for Monochrome LCD Display? **A:** The minimum order quantity for Monochrome LCD Display is 1 Pcs.



Shenzhen ChengHao Optoelectronic Co., Ltd.



+86 755-27806536



add@chenghaolcm.com



chenghaolcd.com

7th floor, building C5, Hengfeng Industrial City, Hangcheng street, Bao'an District, Shenzhen