



ISO9001 Certified Monochrome LCD Display 1/4 Duty 1/3 Bias Drive Method

Our Product Introduction

for more products please visit us on chenghaolcd.com

Basic Information

- Place of Origin: Shenzhen, China
- Brand Name: Chenghao Optoelectronic
- Certification: CE / RoHS / FCC
- Model Number: CH31X4T01F
- Minimum Order Quantity: 100 pcs
- Packaging Details: All the products are packed in right way to keep it safe. For small sizes of products we use tray + carton, For bigger sizes we use foam slot + carton. we also design packages according to customers' requirements.
- Delivery Time: 3~5 working days
- Payment Terms: TT or negotiation
- Supply Ability: 5000K Pcs/Month

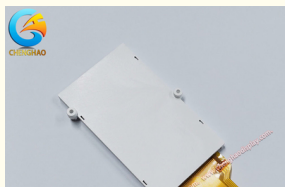


Product Specification

- Brightness: 150 Cd/m²
- Storage Temperature: -30 To +80
- Module Size: 67.5*100.4*9.7 Mm
- Viewing Area: 52.2*91.1 Mm
- Drive Method: 1/4 Duty 1/3 Bias
- Operating Temperature: -20 To +70
- Response Time: 16 Ms
- Polarizer Mode: Transflective
- Highlight: ISO9001 Certified Monochrome LCD Display, Monochrome LCD Display 1/4 Duty



More Images





Product Description

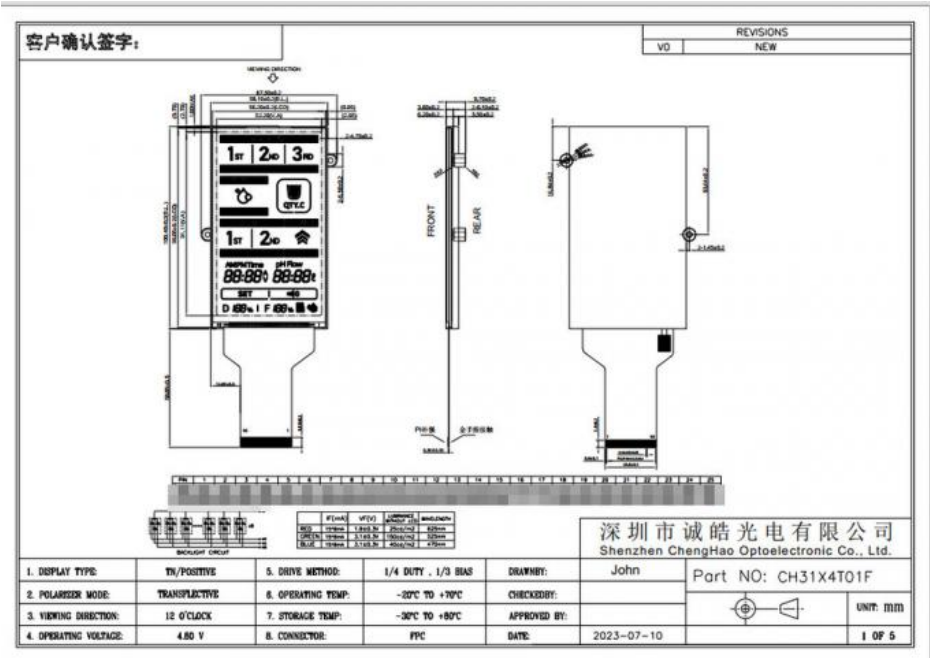
Product Description:

ISO9001 Certified Manufacturer Monochrome LCD Display 1/4 Duty 1/3 Bias Drive Method

Our **Tn Monochrome Display** is a quality monochrome LCD panel with **FPC pin number** of 50 pins, **connector** of FPC, **operating temperature** range of -20 to +70, **polarizer mode** of transfective, and **response time** of 16 ms. It is a reliable, cost-effective solution for a wide variety of applications.

This **monochrome LCD display** has excellent display performance and is designed for long-term use. It features a bright and high contrast display, wide viewing angle, and wide operating temperature range. The display can be easily integrated into various systems and applications due to its low power consumption and easy to use interface.

Our **monochrome LCD display** is suitable for a variety of industrial, medical, consumer, and automotive applications. It provides excellent image quality, superior performance, and robust reliability. It is an ideal choice for applications requiring a reliable, high-quality display.



Features:

Product Name: Monochrome LCD Display

LCD Size: 56.2*99.05 mm

Module Size: 67.5*100.4*9.7 mm

Operating Voltage: 4.8V

Polarzer Mode: Transfective

Connector: FPC

Monochrome LCD Display

Mono LCD Screen

Monochrome LCD Panel

Technical Parameters:

Attribute	Value
LCD Size	56.2*99.05 mm
Connector	FPC
Storage Temperature	-30 to +80

Operating Voltage	4.8V
Display Type	TN/Positive
Polarizer Mode	Transflective
FPC Pin Number	50 Pins
Viewing Direction	12 O'clock
Drive Method	1/4 Duty 1/3 Bias
Display Color	Red & Blue & Green & White ...

Applications:

Monochrome LCD Display, made by Chenghao Optoelectronic, Model Number CH31X4T01F, is a popular product from Shenzhen, China, with CE / RoHS / FCC certification, minimum order quantity 1 Pcs. The product is packed in right way to keep it safe, with tray + carton for small sizes and foam slot + carton for bigger sizes. The package could also be designed according customer's requirement. The delivery time is 3~5 working days, and the payment terms are TT or negotiation. The supply ability is up to 5000K Pcs/Month. It has a high brightness of 150 Cd/m2 and a viewing area of 52.2*91.1 Mm, viewing direction 12 O'clock and FPC pin number of 50 Pins, with FPC connector.



Automotive Products



Meters&Measuring devices



Communication&Hand-held device

Support and Services:

Monochrome LCD Display provides technical support and service for our customers. We offer technical support via telephone, email, and online chat. Our technical support team is available to answer any questions you may have about our products. We also provide software and firmware updates for our products. Additionally, we offer a repair and replacement service for any defective or damaged products.

Packing and Shipping:

Packaging and Shipping for Monochrome LCD Display

The Monochrome LCD Display is packaged in a cardboard box with foam inserts to secure the product and prevent damage during shipping. The box is securely sealed with adhesive tape to ensure that the product remains intact during transport.

The product is shipped via a reputable courier service that is reliable and provides tracking information and delivery confirmation. The delivery time varies depending on the destination, but typically takes 3-5 business days.

FAQ:

Q1: What's the Brand Name of this product?

A1: The Brand Name of this product is Chenghao Optoelectronic.

Q2: What's the Model Number of this product?

A2: The Model Number of this product is CH31X4T01F.

Q3: Where is this product from?

A3: This product is from Shenzhen, China.

Q4: What certifications does this product have?

A4: This product has CE / RoHS / FCC certifications.

Q5: What's the Minimum Order Quantity?

A5: The Minimum Order Quantity is 1 Pcs.



Shenzhen ChengHao Optoelectronic Co., Ltd.



+86 755-27806536



add@chenghaolcm.com



chenghaolcd.com

7th floor, building C5, Hengfeng Industrial City, Hangcheng street, Bao'an District, Shenzhen