



## 10.1 Inch Capacitive Touch Screen Module 800\*1280 Full HD TFT LCD Display

### Basic Information

- Place of Origin: ShenZhen, China
- Brand Name: Chenghao/Oem
- Certification: ROHS ISO9001 CE
- Model Number: CH101WX05A-CTB
- Minimum Order Quantity: 100 pcs
- Price: /
- Packaging Details: All the products are packed in right way to keep it safe. For small sizes of products we use tray + carton, For bigger sizes we use foam slot + carton. we also design packages according to customers' requirements
- Delivery Time: 7-15 working days
- Payment Terms: T/T
- Supply Ability: 300Kpcs/month

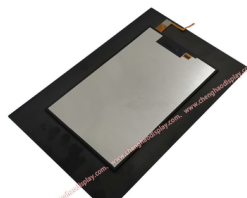


### Product Specification

- Product Name: 10.1 Inch Touch Screen Display
- Resolution: 800\*1280 Dots
- Viewing Angle: 80/80/80/80
- Operation Temp. : -20°C~+70°C
- Luminance: 300cd/m2
- Display Mode: IPS
- Storage Temp: -30°C~+80°C
- Color: 16M
- Highlight: 10.1 inch Capacitive Touch Screen Module, Capacitive Touch TFT LCD Display, 800\*1280 TFT LCD Display



### More Images



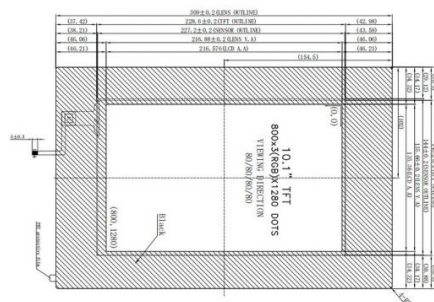
## Product Description

### 10.1 inch Capacitive Touch Screen Module 800\*1280 Full HD Tft Lcd Display

#### Description of 10.1 inch tft lcd

Introducing the Full HD 10.1 inch Lcd Module with TP, Model No. CH101WS05A-CTB, a high-quality display module that is perfect for elevators. The module boasts a resolution of 800\*1280 pixels and features IPS/Transmissive/Normally Black display technology, providing clear and vibrant images from any angle with a viewing direction of 80/80/80/80.

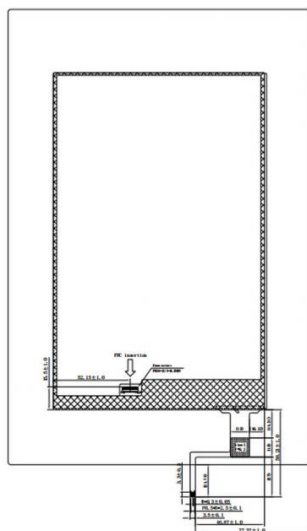
The module has a module size of 204\*309\*5.53mm and a viewing area of 135.66(W)×216.88(H)mm, with an active area of 135.36(W)×216.576(H)mm. It can withstand a wide range of temperatures, with an operating temperature range of -20 ~ +70 °C and a storage temperature range of -30 ~ +80 °C. With a life span of 30000 hours, this display module is built to last.



#### Specification of 10.1 inch Lcd display

Module No	CH101WS05A-CTB
Resolution	800*1280 Pixels
Viewing Direction	80/80/80/80
Display Mode	IPS/Transmissive/Normally Black
Luminance	300 cd/m2
Operating Temp	-20 ~ +70°C
Storage Temp	-30 ~ +80°C
Module Size	204*309*5.53 mm

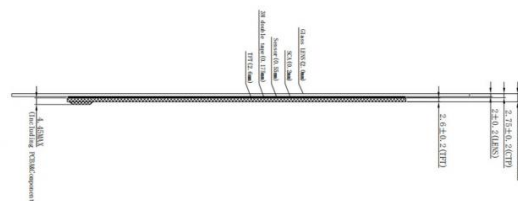
#### Quick detail of 10.1 inch Lcd display module



Keywords: 10.1 inch Lcd display module  
 Lcd Type: 10.1" TFT+CTP  
 Display Mode: Transmissive/Normally Black/IPS  
 Number of dots: 800\*(RGB)\*1280  
 Viewing Direction: 80/80/80/80  
 Operation temp.: -20°C ~ +70°C, ≤90%RH  
 Storage temp.: -30°C ~ +80°C, ≤90%RH  
 The general tolerance is ±0.3mm  
 All material in the drawing comply with the RoHS

#### CTP NOTE:

1. G+G  
ITO Glass: 0.55mm  
Lens Glass: 2.0mm  
IC: GT911
2. Operation Voltage: 2.8V-3.3 V

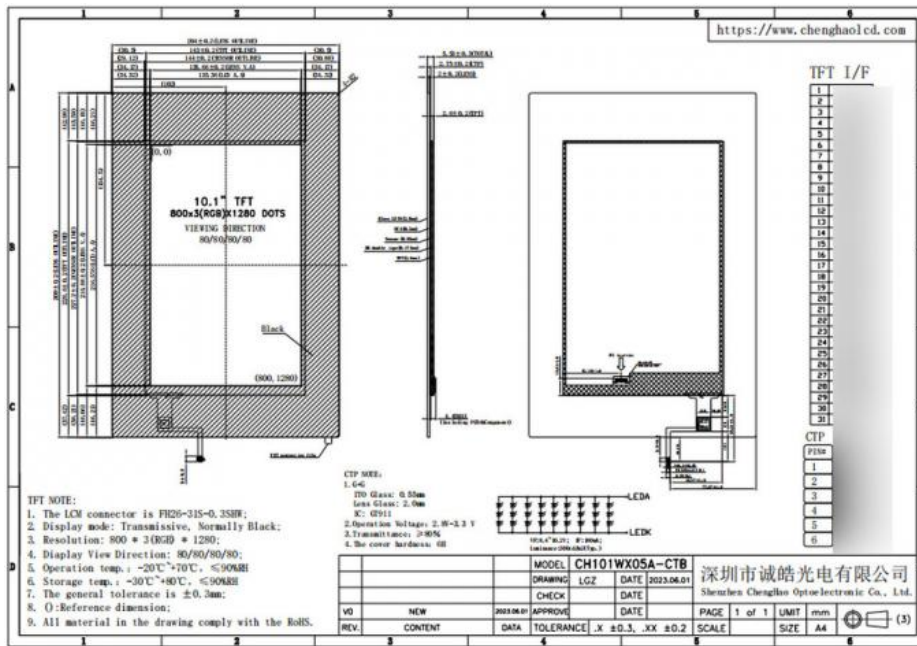


3. Transmittance: ≥80
4. The cover hardness: 6H  
Luminance: 300 cd/m2  
Lens Outline Size: 204\*309\*5.53 mm  
TFT Outline Size: 143\*228.6 mm  
Sensor Outline Size: 144\*227.2 mm  
Viewing Area: 135.66\*216.88 mm

#### About After-sales

This product is certified with RoHS, CE, and FCC, ensuring its compliance with international safety and quality standards. It is available for delivery in 7-15 working days and can be shipped to Shenzhen, China. For payment, we accept T/T, a secure and reliable method of payment. In addition, we offer one-year warranty service and remote online technical support to ensure complete customer satisfaction.

We offer flexible packaging options to suit your needs, including tray + carton for small sizes and foam slot + carton for larger sizes. We can also customize the packaging to meet your specific requirements.



## FAQ

Q: What is the production capacity of Chenghao Optoelectronic?

A: Chenghao Optoelectronic has a production capacity of 300K pcs/month.

Q: Does Chenghao Optoelectronic provide OEM and ODM services?

A: Yes, Chenghao Optoelectronic does provide OEM and ODM services.

Q: What kind of LCD solutions does Chenghao Optoelectronic provide?

A: Chenghao Optoelectronic provides one-stop liquid crystal display solutions.

Q: Does Chenghao Optoelectronic have an R&D technical team?

A: Yes, Chenghao Optoelectronic has an R&D technical team.

Q: What are the advantages of buying from Chenghao Optoelectronic?

A: Customers can enjoy factory direct selling prices, engineers directly connect with customers and assist in solving customer problems, and there is a long-term and stable supply.

Q: What is the delivery period for Chenghao Optoelectronic products?

A: The delivery period for Chenghao Optoelectronic products is 7-15 working days.



**Shenzhen ChengHao Optoelectronic Co., Ltd.**



+86 755-27806536



add@chenghaolcm.com



chenghaolcd.com

7th floor, building C5, Hengfeng Industrial City, Hangcheng street, Bao'an District, Shenzhen