



## 4.3" TFT IPS Small LCD Touch Screen With 480x272 Dot Resolution

Our Product Introduction

for more products please visit us on [chenghaolcd.com](http://chenghaolcd.com)

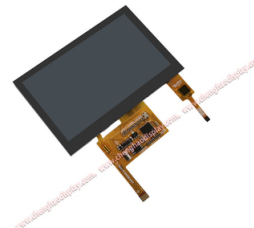
### Basic Information

- Place of Origin: ShenZhen, China
- Brand Name: Chenghao/Oem
- Certification: ROHS ISO9001 CE
- Model Number: CH430WQ16A-CTB
- Minimum Order Quantity: 100 pcs
- Price: /
- Packaging Details: All the products are packed in right way to keep it safe. For small sizes of products we use tray + carton, For bigger sizes we use foam slot + carton. we also design packages according to customers' requirements
- Delivery Time: 7-15 working days
- Payment Terms: T/T
- Supply Ability: 300Kpcs/month



### Product Specification

- Product Name: Small TFT LCD Displays
- Dot Arrangement: 480(RGB)×272
- Viewing Direction: 80/80/80/80
- CTP Driver IC: GT911
- TFT/CTP Active Area: 95.04(W)×53.856(H) Mm
- TFT Interface: SPI
- Operating Temperature: -20 ~ +70 °C
- Highlight: TFT IPS Small LCD Touch Screen , GT911 IC Small LCD Touch Screen , RGB Vertical Stripe TFT IPS Display



### More Images



### Product Description

#### 4.3" TFT IPS Small LCD Touch Screen With 480x272 Dot Resolution

##### Specification of TFT IPS Display

Module No	CH430WQ16A-CTB	--
LCD type	4.3" TFT + CTP	--
Dot arrangement	480(RGB)×272	dots
Color filter array	RGB vertical stripe	--
Viewing Direction	80/80/80/80	--
CTP Driver IC	GT911	--
Module size	105.5(W)×67.2(H)×4.95(T)	mm
Display mode	IPS / Transmissive / Normally Black	--
TFT/CTP Active area	95.04(W)×53.856(H)	mm

Our Product Introduction

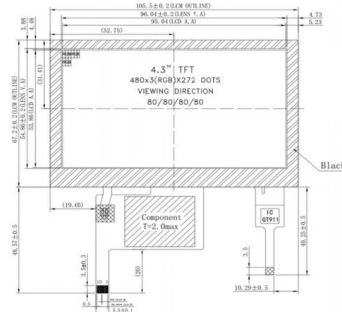
CTP Viewing area	96.04(W)×54.86(H)	mm
CTP type	G+G	--
TFT Dot pitch	0.198 (W)×0.198 (H)	mm
TFT Interface	SPI	--
CTP Interface	I2C	--
Storage temperature	-30 ~ +80	°C
FPC Pin Number	10	--
Back Light	7 White LED	--
Operating temperature	-20 ~ +70	°C

#### Describe of custom tft display

Introducing the CH430WQ16A-CTB TFT LCD Display, a high-quality display solution for a range of applications. With a resolution of 480×272 dots and a viewing direction of 80/80/80/80, this module provides clear and vibrant images for commercial equipment, medical equipment, industrial equipment, and more.

The CH430WQ16A-CTB features an IPS/Transmissive/Normally Black display type, ensuring that your visual information is displayed accurately and clearly. The module's compact design, with a module size of 105.5(W)×67.2(H)×4.95(T) mm and a display area of 96.04(W)×54.86(H)mm, makes it ideal for use in equipment with limited space.

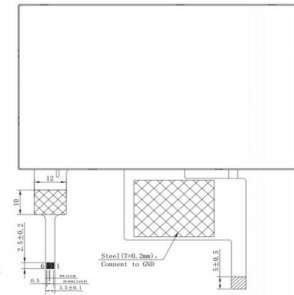
The TFT LCD display supports SPI interface and has 10 FPC pins, among which FPC can be designed and customized according to customer requirements to ensure perfect compatibility with customer hardware equipment.



CH430WQ16A-CTB is designed to work in a wide temperature range, from -20°C to +70°C, suitable for use in various environments.

With a life span of 30,000 hours, this module is built to last, providing reliable and consistent performance for your equipment needs. The CH430WQ16A-CTB is RoHS, CE, and FCC certified, ensuring that it meets international safety and environmental standards.

As a cross-border e-commerce operator, we are proud to offer this high-quality TFT LCD Display to our customers, providing a reliable and versatile display solution for a range of applications. The CH430WQ16A-CTB is suitable for use in commercial equipment, medical equipment, industrial equipment, and more, and we are committed to providing exceptional service to ensure that our customers get the most out of their display module.



#### Features of tft color display

##### \* Support Multi-Touch Feedback:

The CH430WQ16A-CTB TFT LCD Display supports multi-touch feedback, providing a responsive and intuitive user experience. With its multi-touch capabilities, this module allows users to interact with the display using multiple touch points simultaneously, making it ideal for applications where precise and accurate touch feedback is required. Whether you are designing a commercial product or a medical device,

the CH430WQ16A-CTB offers a flexible and user-friendly solution.

##### \* Support Wide Temperature Environment:

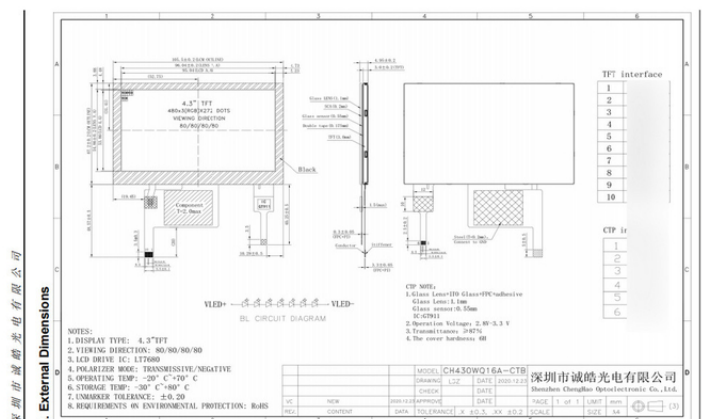
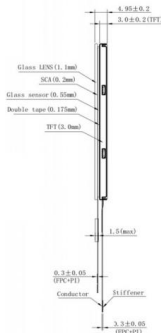
The CH430WQ16A-CTB TFT LCD Display is designed to support a wide temperature range, from -20°C to +70°C. This feature makes it ideal for use in harsh or extreme environments, where temperature variances can be a challenge. With its ability to operate in a wide temperature range, the CH430WQ16A-CTB ensures reliable and consistent performance, regardless of the conditions it is subjected to. This makes it an ideal choice for applications such as outdoor equipment, automotive displays, and more.

##### \* Support Free View:

The CH430WQ16A-CTB TFT LCD Display features an IPS display type, which allows for a free view experience. This means that the display can be viewed from any angle without any distortion or color shift, making it ideal for applications where multiple viewers need to see the display at the same time. With its free view capabilities, the CH430WQ16A-CTB offers a flexible and user-friendly experience, making it suitable for applications such as digital equipment, laboratory equipment, and more.

##### \* Support Customization on Demand:

The CH430WQ16A-CTB TFT LCD Display can be customized on demand, making it a highly versatile and adaptable solution for a range of applications. Whether you need a specific size, shape, or interface, the CH430WQ16A-CTB can be tailored to meet your unique



requirements. This customizability makes it an ideal choice for equipment manufacturers and designers who need a display solution that can be tailored to their specific needs. With its ability to be customized on demand, the CH430WQ16A-CTB TFT LCD Display offers a range of features that make it a highly versatile and adaptable solution for a range of applications. In summary, the CH430WQ16A-CTB TFT LCD Display offers a range of features that make it a highly versatile and adaptable solution for a range of applications. With its support for multi-touch feedback, wide temperature environment, free view, and customization on demand, this module provides a reliable and user-friendly display

solution for commercial equipment, medical equipment, industrial equipment, and more. As a cross-border e-commerce operator, we are proud to offer this high-quality display module to our customers, along with exceptional service and support to ensure that they get the most out of their display solution.

#### FAQ

1. Where is Chenghao Optoelectronic located?

Answer: Chenghao Optoelectronic is located in Shenzhen, China.

2. What is the supply ability of Chenghao Optoelectronic?

Answer: Chenghao Optoelectronic has a monthly supply capacity of 300K pcs/month.

3. Does Chenghao Optoelectronic support OEM and ODM services?

Answer: Yes, Chenghao Optoelectronic supports both OEM and ODM services, providing one-stop liquid crystal display solutions.

4. Does Chenghao Optoelectronic have its own TFT LCD manufacturing plant?

Answer: Yes, Chenghao Optoelectronic has its own TFT LCD manufacturing plant.

5. Does Chenghao Optoelectronic have an R&D technical team?

Answer: Yes, Chenghao Optoelectronic has an R&D technical team.

6. Does Chenghao Optoelectronic have a sales team?

Answer: Yes, Chenghao Optoelectronic has a sales team.

7. What certifications do Chenghao Optoelectronic's products provide?

Answer: All of Chenghao Optoelectronic's products provide CE, FCC, and RoHS certificates.

8. What kind of technical support does Chenghao Optoelectronic offer?

Answer: Chenghao Optoelectronic offers remote online technical support from their team of skilled engineers.



**Shenzhen ChengHao Optoelectronic Co., Ltd.**



+86 755-27806536



add@chenghaolcm.com



chenghaolcd.com

7th floor, building C5, Hengfeng Industrial City, Hangcheng street, Bao'an District, Shenzhen