



3line SPI 18bit RGB TFT LCD Screen With 4pcs White LED Backlight

Our Product Introduction

Basic Information

- Place of Origin: ShenZhen, China
- Brand Name: Chenghao/Oem
- Certification: ROHS ISO9001 CE
- Model Number: CH210WV01A
- Minimum Order Quantity: 100 pcs
- Price: /
- Packaging Details: All the products are packed in right way to keep it safe. For small sizes of products we use tray + carton, For bigger sizes we use foam slot + carton. we also design packages according to customers' requirements
- Delivery Time: 7-15 working days
- Payment Terms: T/T
- Supply Ability: 300Kpcs/month

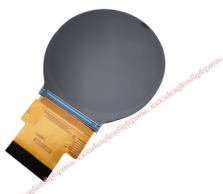


Product Specification

- Brightness: 300 Cd/m2
- Color Depth: 262K
- Contrast Ratio: 800
- Display Type: TFT LCD
- TFT Interface: 3line SPI + 18bit RGB
- Operating Temperature: -20 ~ +70 °C
- Resolution: 480(RGB)×480 Pixels
- Response Time: 20 Ms
- Screen Size: 2.1 Inch
- Viewing Angle: 80/80/80/80
- Lcd Driver IC: ST7701S
- Highlight: 18bit RGB TFT LCD Screen ,
3line SPI TFT LCD Screen ,
ST7701S SPI LCD Screen



More Images



Product Description

3line SPI 18bit RGB TFT LCD Screen With 4pcs White LED Backlight

Parameters of TFT LCD Module

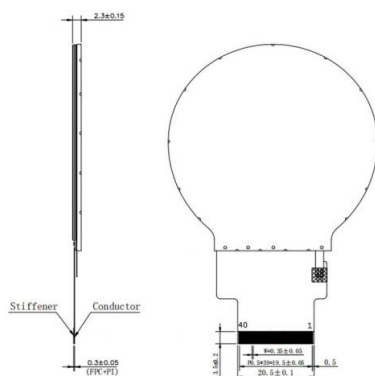
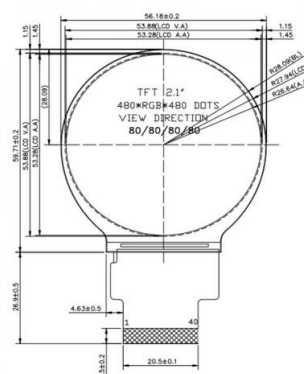
| | |
|--------------------|---------------------------------|
| Module No | CH210QV01A |
| Lcd Type | 2.1" TFT |
| Display Mode | IPS/Transmissive/Normally Black |
| Number of dots | 480xRGBx480 |
| Lcd Driver IC | ST7701S |
| Viewing Direction | 80/80/80/80 |
| Operating Temp | -20 ~ +70 °C |
| Storage Temp | -30 ~ +80 °C |
| TFT Interface | 3line SPI + 18bit RGB |
| Color filter array | RGB vertical stripe |
| Module size | 56.18(W)×59.71(H)×2.3(T) mm |
| Active area | φ53.28 mm |
| Dot pitch | 0.111(W)×0.111(H) mm |
| Back Light | 4 pcs White LED |
| Weight | TBD g |
| Color | 262K/65K |

Description of IPS Screen Panel

Welcome to our online store! We are excited to introduce the CH210QV01A Round Color TFT LCD Screen from Chenghao Optoelectronic, a high-quality product that is perfect for your electronic display needs.

This round color TFT LCD screen boasts a resolution of 480x480 dots with an IPS/Transmissive/Normally Black display type, delivering vibrant and clear visuals. With a viewing direction of 80/80/80/80, you can enjoy a wide and comfortable viewing experience. The module size is compact, measuring 56.18(W)×59.71(H)×2.3(T) mm and with a display area of φ53.28 mm, making it ideal for a variety of electronic devices.

The CH210QV01A is designed to operate in a wide temperature range, from -20 to +70 degrees Celsius, and has a storage temperature range of -30 to +80 degrees Celsius, ensuring its durability and reliability. The module also has a long lifespan, with a life of up to 30000 hours.



This product features 40 FPC pins and is certified with RoHS, CE, and FCC

certificates, ensuring its compliance with environmental and safety standards. The CH210QV01A also comes with a warranty duration of 12 months, providing you with peace of mind and the assurance that you are investing in a quality product.

Whether you are looking to upgrade your existing electronic device or build a new one from scratch, the CH210QV01A Round Color TFT LCD Screen is an excellent choice that will meet your needs and exceed your expectations. Order yours today and experience the convenience and versatility of this high-quality product!

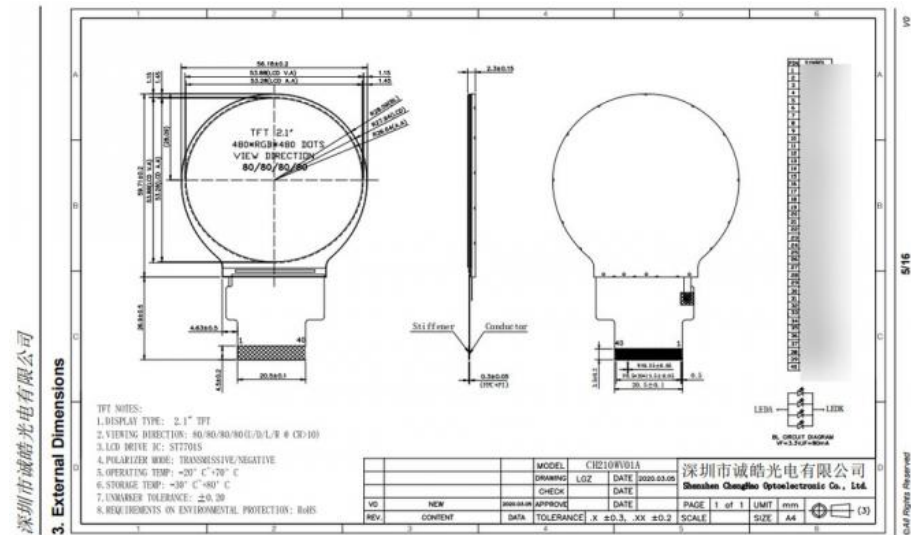
Feature of TFT LCD Module

Welcome to our online store! We are excited to introduce the CH210QV01A Round Color TFT LCD Screen from Chenghao Optoelectronic, a high-quality product that offers a range of features and benefits to meet your electronic display needs.

One of the key features of this product is its support for wide temperature environments, making it an ideal choice for use in a variety of applications that require reliable performance in extreme temperatures. With its wide temperature range of -20 to +70 degrees Celsius, the CH210QV01A can withstand harsh operating conditions, making it a durable and reliable choice for a variety of electronic devices. Another standout feature of the CH210QV01A is its support for customization, allowing users to tailor the display to meet their specific needs. This makes it a versatile and adaptable choice for a wide range of electronic devices, from industrial equipment to medical monitoring devices. The CH210QV01A also offers a free perspective, providing users with a clear and vibrant display from any angle. With its viewing direction of 80/80/80/80, users can enjoy a comfortable and intuitive viewing experience.

Overall, the CH210QV01A Round Color TFT LCD Screen is a top-quality product that offers a range of features and benefits. Its support for wide temperature environments, customization options, and free perspective make it an excellent choice for a variety of applications. Whether you are in the automotive, medical, or industrial industry, this product is sure to meet your needs and exceed your expectations. Order yours today and

experience the convenience and versatility of this fantastic product!



Application Field

The CH210QV01A Round Color TFT LCD Screen from Chenghao Optoelectronic is a versatile product that is perfect for a wide range of applications.

One potential application field for this product is in the automotive industry. With its support for wide temperature environments, the CH210QV01A is an ideal choice for use in car infotainment systems, allowing drivers to easily and safely navigate through various menus and options while on the road. Its support for customization also makes it a great choice for use in dashboard displays, providing clear and easy-to-read information to drivers.

Another potential application field is in the medical industry. With its support for wide temperature environments, the CH210QV01A can be used in a variety of medical devices that are exposed to extreme temperatures. Its customization options also make it an ideal choice for use in medical monitoring and diagnostic equipment, providing accurate and reliable results.

The CH210QV01A is also a great choice for use in industrial settings, such as in manufacturing or automation equipment. Its support for wide temperature environments and customization options make it a versatile and adaptable choice for a variety of tasks, while its free perspective provides clear and easy-to-read information to operators.

Overall, the CH210QV01A Round Color TFT LCD Screen is a high-quality product that offers a range of features and benefits, making it an excellent choice for a variety of applications. Whether you're in the automotive, medical, or industrial industry, this product is sure to meet your needs and exceed your expectations. Order yours today and experience the convenience and versatility of this fantastic product!

FAQ

Q1. What certifications does the CH210QV01A have?

A2. The CH210QV01A is certified with RoHS, CE, and FCC certificates, ensuring its compliance with environmental and safety standards.

Q2. What is the warranty duration for the CH210QV01A?

A2. The CH210QV01A comes with a warranty duration of 12 months, providing you with peace of mind and the assurance that you are investing in a quality product.

Q3. Does the CH210QV01A support customization?

A3. Yes, this product supports customization, allowing users to tailor the display to meet their specific needs.



Shenzhen Chenghao Optoelectronic Co., Ltd.



+86 755-27806536



add@chenghaolcm.com



chenghaolcd.com

7th floor, building C5, Hengfeng Industrial City, Hangcheng street, Bao'an District, Shenzhen