

800x480 Resolution 7 Inch TFT LCD Display 24bit Parallel RGB Interface

Our Product Introduction

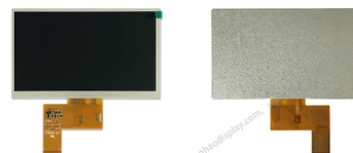
Basic Information

- Place of Origin: ShenZhen, China
- Brand Name: Chenghao/Oem
- Certification: ROHS ISO9001 CE
- Model Number: CH700WV03A
- Minimum Order Quantity: 100 pcs
- Price: /
- Packaging Details: All the products are packed in right way to keep it safe. For small sizes of products we use tray + carton, For bigger sizes we use foam slot + carton. we also design packages according to customers' requirements
- Delivery Time: 7-15 working days
- Payment Terms: T/T
- Supply Ability: 300Kpcs/month



Product Specification

- Product Name: Industrial Lcd Monitor
- LCM Type: 7" TFT
- Resolution: 800x480 Dots
- Display Mode: IPS/Transmissive/Normally Black
- Viewing Direction: 12:00
- Back Light: 280 Cd/m2
- Storage Temperature: -30 ~ +80
- FPC Pin Number: 40pin
- Highlight: Normally Black TFT LCD Display, Parallel TFT LCD Display, RGB Interface 7 Inch Lcd Display



Product Description

800x480 Resolution 7 Inch TFT LCD Display 24bit Parallel RGB Interface

800x480 Resolution 7 Inch Lcd Display 12 0'clock 24bit Parallel RGB Interface

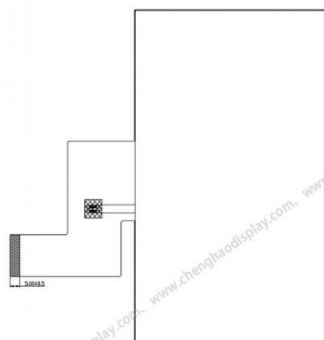
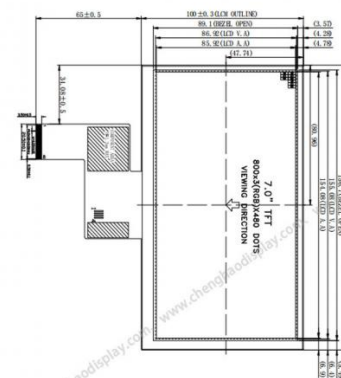
Specification of Liquid Crystal Display Module

Module No	CH700WV03A
Lcd Type	7" TFT
Viewing Direction	12:00
TFT Interface	RGB
FPC Pin Number	40pin
Luminance	280 nits
Color	16M
Module size	164.9(W)×100.0(H)×3.5(T) mm
Active area	154.08(W)×85.92(H) mm
Operating temperature	-20 ~ +70 °C

Description of TFT LCD Module

Chenghao Optoelectronic CH700WV03A is a 7 inch full color tft lcd display module. The display module has a horizontal screen active area with a diagonal length of 7 inches, a resolution of 800*480 pixels, and can display 16M color images. The best viewing angle is 12:00. In order to better cope with the changing ambient temperature, CH700WV03A adopts a wide temperature resistance design, which can show the best performance in the wide temperature environment of -20~+70°C, and can be stored in the environment of -30~+80°C. The service life is more than 30000H.

In addition, in order to improve the compatibility of our products with various devices, Chenghao Optoelectronic provides customers with one-stop customization services for LCDs. We can modify CH700WV03A according to customer requirements. The modified content includes backlight Luminance, TFT Interface, flexible circuit board (FPC), touch cover, screen anti-glare, etc.



Quick Detail of Industrial TFT Display

Keyword TFT LCD Monitor

LCM No CH700WV03A

Viewing Direction 12:00

TFT Interface 24-bit Parallel RGB Interface

Module size 164.9(W)×100.0(H)×3.5(T) mm

Active area 154.08(W)×85.92(H) mm

Operating temperature -20 ~ +70 °C

Dot pitch 0.1926 (W)×0.1790 (H) mm

Storage temperature -30 ~ +80 °C

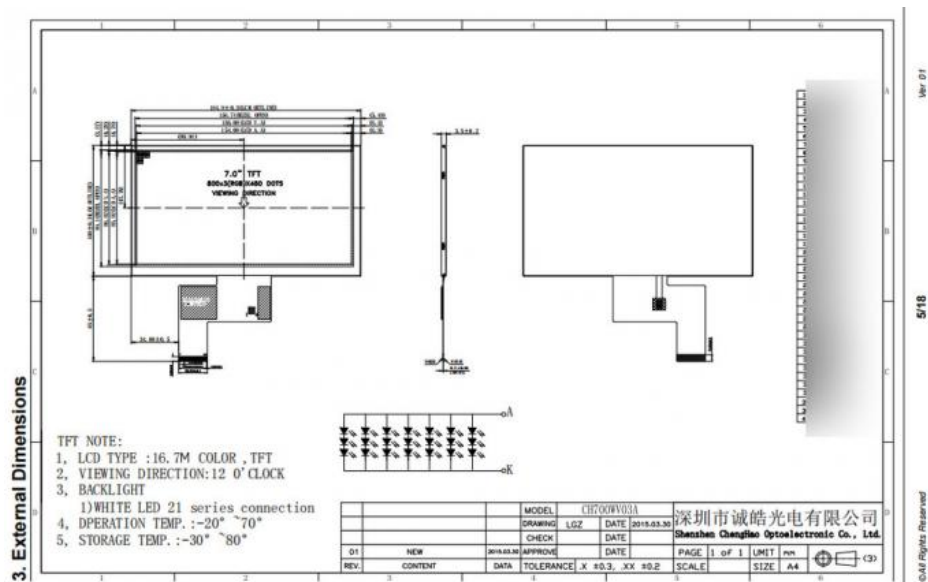
Dot arrangement 800×3(RGB)×480 dots

LCD type 7.0" TFT

Color Pixel Arrangement RGB vertical stripe

Application of Small LCD Display

CH700WV03A is a full color lcd screen module designed and produced by Chenghao Optoelectronic for customers' B super, which can provide customers with CE, RoHS, FCC certificates and one-year warranty service, and can be widely used in vehicle displays, smart home equipment, medical Equipment, instrumentation, industrial control equipment, etc.



FAQ

A: What are the advantages of your products?

Our advantage lies in providing long-term and stable supply, factory direct selling price, engineers directly connecting with customers, providing one-to-one customer service support and one-stop LCD display solutions.

A: How to guarantee the quality of your products?

All of our products have obtained CE, FCC, RoHS certificates and have completed ISO9001 certification. We provide a one-year warranty, and customers can enjoy free repair or replacement products.

A: How do you guarantee the supply capacity?

We have a supply capacity of 300K months and can guarantee timely delivery of orders. At the same time, we are also constantly expanding the production scale to meet the needs of customers.

A: What is the price of your products?

The price of our products is competitive in the industry, and compared with similar products, it has higher cost performance. Our factory direct selling price can guarantee customers to get better profit.

A: How do your engineers provide technical support to customers?

Our engineers can provide remote online technical support and provide customers with on-site technical support when needed. We will respond to customer needs in the first time and solve problems as soon as possible.

A: Is your service professional?

Our service team is composed of professional customer service personnel and engineers, who can provide customers with one-on-one service and ensure that customers' problems are resolved in a timely manner.



Shenzhen ChengHao Optoelectronic Co., Ltd.



+86 755-27806536



add@chenghaolcm.com



chenghaolcd.com

7th floor, building C5, Hengfeng Industrial City, Hangcheng street, Bao'an District, Shenzhen