



0.91inch OLED Display Module 15pin 4 Wire SPI 128x32 Pixels SSD1306

Our Product Introduction

Basic Information

- Place of Origin: ShenZhen, China
- Brand Name: Chenghao/Oem
- Certification: ROHS ISO9001 CE
- Model Number: CH091L002A
- Minimum Order Quantity: 100 pcs
- Price: /
- Packaging Details: All the products are packed in right way to keep it safe. For small sizes of products we use tray + carton, For bigger sizes we use foam slot + carton. we also design packages according to customers' requirements
- Delivery Time: 7-15 working days
- Payment Terms: T/T
- Supply Ability: 300Kpcs/month



Product Specification

- Product Name: 0.91 Inch OLED Display
- Color: White
- Driver IC: SSD1306
- Lcm Size: 0.91 Inch
- TFT Interface: SPI
- LCM Size: 30*11.5*1.2 Mm
- Active Area: 24.384*5.584 Mm
- Luminance: 500 Cd/m2
- Highlight: 0.91inch OLED Display Module,
SSD1306 OLED Display Module,
SPI 0.91 Inch Oled Display



More Images



Product Description

0.91inch OLED Display Module 15pin 4 Wire SPI 128x32 Pixels SSD1306

0.91 Inch OLED Display Module 15pin 4 Wire SPI 128x32 Pixels SSD1306

Specification of 128*32 OLED

| | |
|----------------|-------------|
| Part No | CH091L002A |
| Resolution | 128*32 dots |
| Interface | 4-wire SPI |
| Luminance | 500 cd/m2 |
| Driver IC | SSD1306 |
| Color | White |
| FPC Pin Number | 15 |

Description of 0.91 inch OLED

Chenghao Optoelectronic CH091L002A is a small OLED Display Module equipped with 0.91 inch horizontal screen display area, which can display 128*32 pixel white character content. This 0.91 inch OLED Screen uses a 4 wire SPI interface, with a brightness of 500 cd/m2 and a service life of more than 50000H. It is widely used in various instrumentation equipment. In addition, this OLED Module supports customization services, and can modify FPC, Interface and other content according to customer requirements.

Quick Detail of 0.91" OLED Screen

Keywords: 0.91 inch OLED Module

Module No: CH091L002A

Number of dots: 128*32

Color: White

Driver IC: SSD1306

Interface: 4 wire SPI

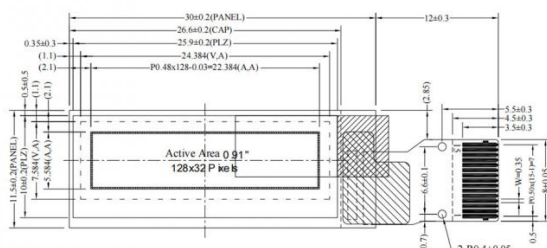
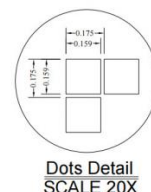
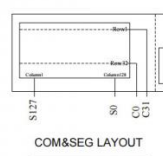
FPC Pin: 15

General Tolerance: ± 0.30

Outline Size: 30*11.5*1.2 mm

Active area: 22.384*5.584 mm

Life Time: 30000H



Why Choose Us?

First of all, Chenghao Optoelectronic is an enterprise integrating industry and trade, with its own OLED manufacturing plant, R&D technical department team and sales team. This means that we can provide you with higher quality products, as well as more professional technical support and services.

Secondly, our supply capacity is very strong, we can provide 300KPCS output per month, providing you with more sufficient inventory and faster delivery time.

In addition, we support OEM, ODM services and can provide one-stop LCD display solutions to better meet your needs.

We also have our own laboratory, have completed ISO9001 certification, and all products are provided with CE, FCC, RoHS certificates. This means we can provide you with higher quality products and more reliable after-sales service.

Finally, we provide one-to-one, 24-hour online customer service, remote online technical support from engineers, and a one-year warranty. These services make it easier for you to manage your products and ensure your customers have the best possible experience.

To sum up, Chenghao Optoelectronic is an enterprise with high quality, strong supply capacity, professional technical support and high-quality service, and it is your ideal partner in choosing OLED Display Module.

FAQ

1. What is the quality assurance of your products?

We provide a one-year warranty and promise that customers will get the best experience when using our products. During the warranty period, if there is any problem with your product, we will provide a timely solution and provide free technical support to customers.

2. How about the price of your products?

Our product prices are competitive in the market because of our strong supply capacity and high-quality production efficiency. At the same time, we also have our own OLED manufacturing plant, R&D technical department team and sales team, which means we can provide higher quality products and better services.

3. How do your engineers connect with customers?

We provide one-to-one, 24-hour online customer service, remote online technical support from engineers, and one-year warranty. Our engineers can directly connect with customers, provide customers with professional technical support and solutions, and assist customers to solve problems encountered.

4. What are the advantages of your products and services?

Our advantages lie in our strong supply capacity, high-quality products, excellent service, professional technical support and long-term stable supply. Our products and services can meet the needs of customers and provide customers with more efficient and better solutions.

5. What is your ISO9001 certification?

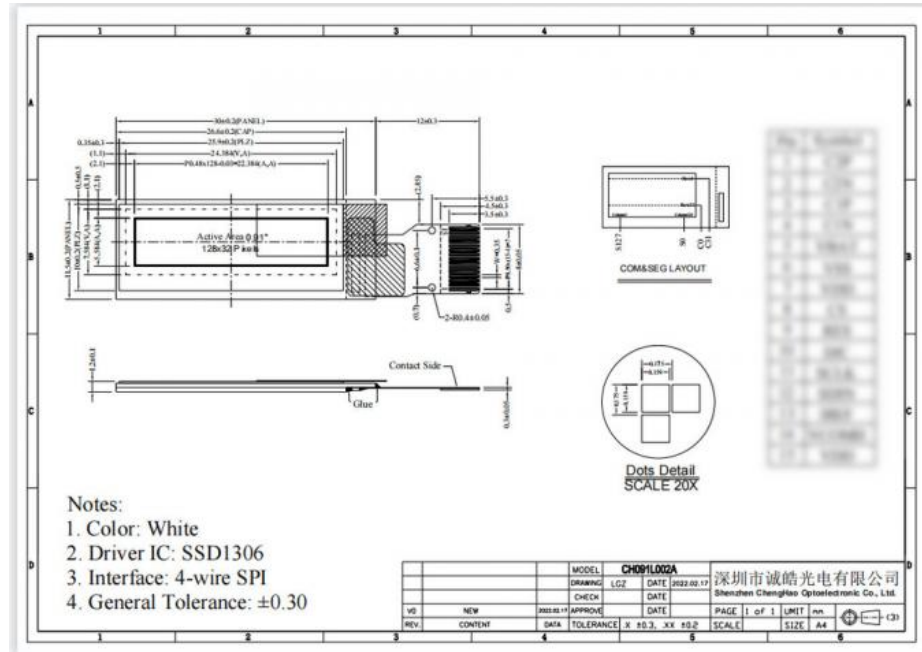
ISO9001 certification is an international general quality management system certification, which requires enterprises to have a sound quality management system to ensure product quality and service levels. Our factory has completed ISO9001 certification, which means our quality management system complies with international standards, and we can provide customers with higher quality products and services.

6. What are your CE, FCC, RoHS certificates?

CE, FCC, RoHS certificates are required certificates for products exported to Europe, the United States and other countries. All of our products have obtained these certificates, which shows that our products meet the safety and environmental protection standards of Europe, the United States and other countries, and we can provide customers with more reliable products.

7. How do you guarantee the quality and performance of your products?

We pay attention to the quality and performance of our products, and take various measures to ensure the quality and performance of our products. Firstly, we have complete production facilities and advanced testing equipment, secondly, we use high-quality raw materials and produce according to strict production standards, finally, our products are strictly tested and inspected to ensure product quality and The performance meets the customer's requirements.



Shenzhen Chenghao Optoelectronic Co., Ltd.



+86 755-27806536



add@chenghaolcm.com



chenghaolcd.com

7th floor, building C5, Hengfeng Industrial City, Hangcheng street, Bao'an District, Shenzhen