



## ROHS ISO9001 CE TFT LCD Module Free Viewing Angle Touch Screen

### Our Product Introduction

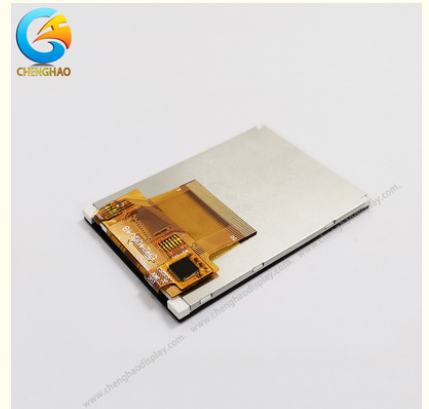
#### Basic Information

- Place of Origin: ShenZhen, China
- Brand Name: Chenghao/Oem
- Certification: ROHS ISO9001 CE
- Model Number: CH240QV48-CT
- Minimum Order Quantity: 100 pcs
- Price: /
- Packaging Details: All the products are packed in right way to keep it safe. For small sizes of products we use tray + carton, For bigger sizes we use foam slot + carton. we also design packages according to customers' requirements
- Delivery Time: 7-15 working days
- Payment Terms: T/T
- Supply Ability: 300Kpcs/month

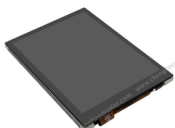


#### Product Specification

- Product Name: 2.4 Tft Lcd Module Display
- Display Mode: TN/Normally White/Transmissive
- Number Of Dots: 240\*320
- Lcm Size: 2.4 Inch
- Viewing Direction: Free Viewing Angle
- LCM Size: 42.72(W)×60.26(H)×3.7(T) Mm
- Active Area: 36.72(W)×48.96(H) Mm
- Dot Pitch: 0.153 (W)×0.153 (H) Mm
- Highlight: **ISO9001 TFT LCD Module, QVGA Touch Screen Module, 240\*320TFT Display Module**



#### More Images



**ROHS ISO9001 CE TFT LCD Module Free Viewing Angle Touch Screen**

## Free Viewing Angle Lcd Module Tft 2.4 Inch Qvga Touch Screen

### Quick Detail of mipi lcd display

Keyword: **tft lcd colour monitor**

Display Type: 2.4" TFT+CTP

Display Size:2.4 inch lcd display

Supplier Type: Manufacturer

Brand Name:Chenghao / OEM

Touch Panel:Capacitive Touch Panel

### Touch Panel Interface:I2C

Resolution: 240\*320 dots

Interface:

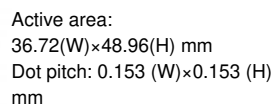
4-lines 8bit / 3-lines 9bit SPI

8-/ 9-/16-/18-bit 8080-series system interface

SPI + 6-/16-/18-bit RGB interface

CTP Driver IC : FT6336

LCM size: 42.72(W)×60.26(H)×3.7(T) mm



Luminance: 300 cdm2

Viewing Angle:80/80/80/80 (L/R/U/D)

Operating temperature: -20 ~ +70 °C

Storage temperature: -30 ~ +80 °C

Back Light: 4 White LED In Parallel

Certification:CE/ROHS/FCC

## Custom Service

- 1.Brightness:450~1000nits
- 2.Touch panel Type:RTP or CTP are optional
- 3.LCD Type:TN
- 4.Panel Size: 0.91 inch~10.1 inch
- 5.Touch Glass Cover :support customized

### Description of lcd touch screen module

CH240QV48A-CT is a capacitive touch LCD module newly designed by Chenghao Optoelectronic. The brightness of the display is 300 cd/m2 (optional), and it can be used in a wide temperature environment (-20~+70°C). There is a 2.4 inch vertical screen display area of this ips capacitive touchscreen, the display screen can output video or pictures with 240\*320 pixels. In addition, the display module not only supports all viewing angles, but also has a long service life (>30000H).

### Specification of ips tft display

### Feature of ips lcd display

- (1) Support multi-touch

CH240QV48-CT display is equipped with a capacitive touch panel on the surface, uses I2C interface for signal transmission, and supports multi-touch.

- (2) Support Free Viewing Angle

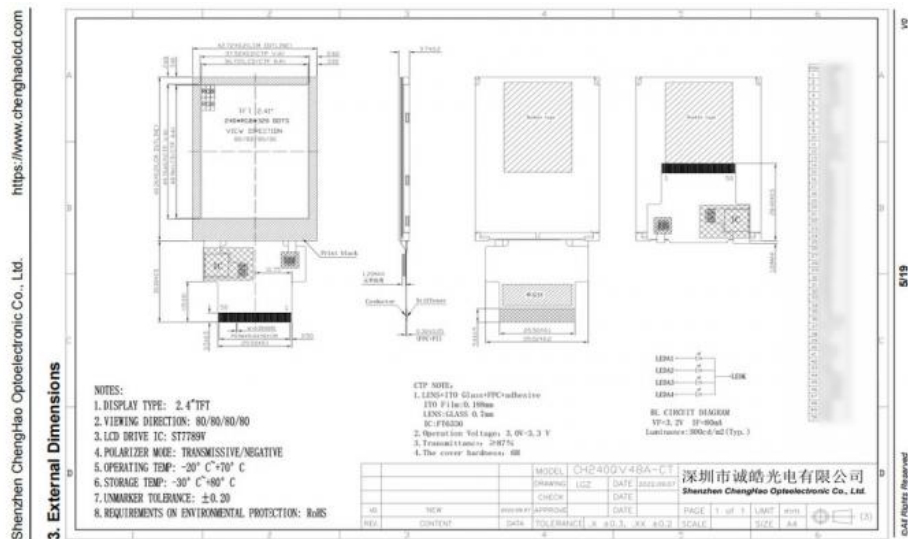
Thanks to the design of IPS display mode, the viewing angle of this lcd module has been expanded to 80/80/80/80, and users can get clear vision when reading the screen at any angle.

- (3) Support the use in wide temperature environment

- (4) Support OEM/ODM customization

As an lcd module manufacturer, Chenghao Optoelectronic has its own technical team, which can provide customers with lcd customization

solutions.



## Our Service

### 1.Pre-sale service:

Our team designs and makes solutions according to the different requirements of different customers.  
We provide 24-hour service, and each of your message inquiries will be replied within 12 hours.

### 2.After-sales service:

1. We provide customer service by Skype, phone or email, and provide you with videos or drawings to solve problems.
2. We provide remote control services through the Internet to achieve real-time services and shorten the time to solve problems.
3. We have professional engineers for customers to keep quick reply.

## FAQ

### 1. How to guarantee the quality of your products?

All of our products have passed strict quality inspections to ensure that the quality of the products meets international industry standards. At the same time, we also provide customers with one-year warranty service, and solve problems raised by customers in a timely manner.

### 2. How about the price of your products?

The price of our products is competitive in the market because we have a complete production line and advanced production equipment, and we have been committed to reducing production costs and providing customers with better cost performance.

### 3. Can your products be customized?

Yes, we can customize according to customers' needs. We have a professional R&D team and designer team, which can provide customers with personalized design and customization services.

### 4. What is your shipping time?

Our delivery period is generally within 7-15 working days, depending on the quantity of the product and the shipping method. We will provide the best transportation plan according to the needs and requirements of customers.

### 5. What is your payment method?

We support T/T payment method.

### 6. How is your packing?

All of our products are properly packaged to ensure the safety of the product during transportation. For products of different sizes and shapes, we will use different packaging materials and methods. We will also provide personalized packaging services according to customer needs.



Shenzhen ChengHao Optoelectronic Co., Ltd.



+86 755-27806536



add@chenghaolcm.com



chenghaolcd.com

7th floor, building C5, Hengfeng Industrial City, Hangcheng street, Bao'an District, Shenzhen