

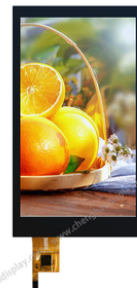


## 40pin SPI RGB LCD Display Module 5.0 inch Industrial TFT Display

### Our Product Introduction

#### Basic Information

- Place of Origin: ShenZhen, China
- Brand Name: Chenghao/Oem
- Certification: ROHS ISO9001 CE
- Model Number: CH500FW07A-CT
- Minimum Order Quantity: 100 pcs
- Price: /
- Packaging Details: All the products are packed in right way to keep it safe. For small sizes of products we use tray + carton, For bigger sizes we use foam slot + carton. we also design packages according to customers' requirements
- Delivery Time: 7-15 working days
- Payment Terms: T/T
- Supply Ability: 300Kpcs/month



#### Product Specification

- Product Name: Industrial Capacitive Touch Screen
- Dot Arrangement: 480x854 Dots
- Display Mode: IPS/Transmission/Normally Black
- Interface: RGB+SPI
- Storage Temp: -30 ~ +80°C
- Luminance: 450 Cd/m2
- Pin Number: 40 Pin
- Highlight: SPI RGB LCD Display Module,  
40pin LCD Display Module,  
40pin Industrial TFT Display



#### More Images



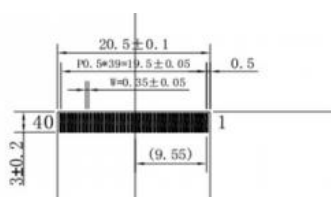
## Product Description

### 40pin SPI RGB LCD Display Module 5.0 inch Industrial TFT Display

### 5.0 Inch Industrial Tft Display 40 Pin SPI RGB 480x854 IPS Screen

### Specification of industrial touch screen monitor

Module No	CH500FW07A-CT
Lcd Type	5" TFT+CTP
Resolution	480*854 dots
TFT Interface	SPI+RGB
Luminance	450 cd/m2



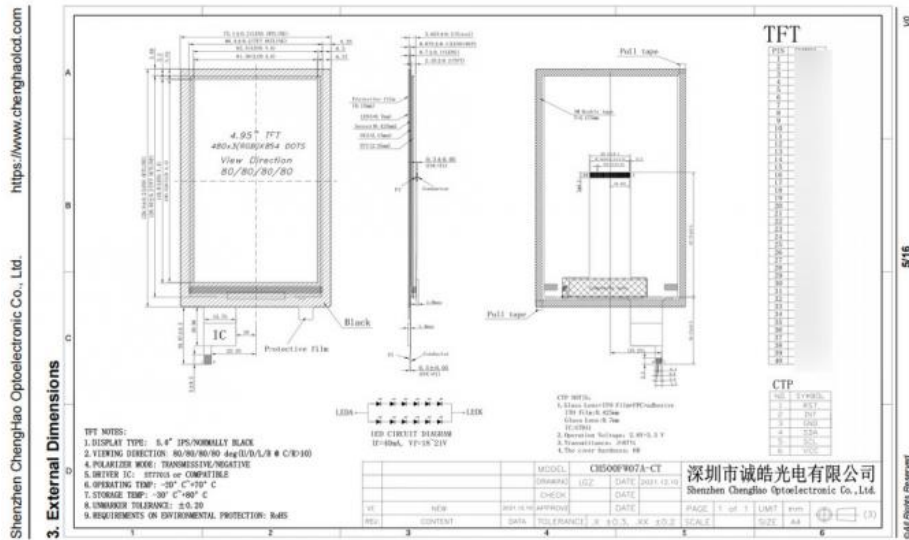
### Description of full hd lcd display

CH500FW07A-CT is an industrial-grade **liquid crystal display module** produced by Chenghao LCD, which is specially designed for a wide range of industrial applications such as industrial equipment, medical equipment, office equipment, laboratory equipment, and payment equipment. It can display images with 16M colors, 480\*854 resolution, and the viewing direction is 80/80/80/80 (all viewing angles). The module also has IPS/transmissive/normally black display type, capacitive touch screen with I2C interface, 40-pin FPC pin count CH500FW07A-CT has high brightness and long life, which is a reliable and durable solution for industrial applications.



### Quick details of spi lcd display

LCD type: 5" TFT+CTP  
 Resolution: 480\*854 dots  
 Viewing Direction: 80/80/80/80 (all viewing angles)  
 Module size: 75.1(W)×128.9(H)×3.625(T)mm  
 Active area: 61.56(W)×109.53(H)mm  
 Dot pitch: 0.12825(W)×0.12825(H) mm  
 TFT Interface: 3 lines 9bit SPI + 24bit RGB interface  
 FPC Pin Number: 40 pins  
 Touch Panel Type: capacitive Touch Panel  
 Touch Panel Interface: I2C  
 Luminance: 450 cd/m2 High Brightness(optional)  
 Back Light: 12 White LEDs in serial  
 Life Time: 20000 hours  
 Use Case: Face Recognition Device  
 Certificates available: RoHS, CE, FCC



### Features of 5 inch tft display

**High resolution:** The CH500FW07A-CT has a resolution of 480x854 dots, providing you with clear and detailed visual displays.

**Wide viewing angles:** With a viewing direction of 80/80/80/80, the display can be viewed from any angle without any loss of image quality.

**Capacitive touch panel:** The module features a capacitive touch panel, providing a responsive and accurate touch experience.

**High-brightness backlight:** Optional high-brightness backlight with 450 cd/m2 luminance enables the display to be easily viewed in any lighting environment.

**Excellent compatibility:** The module is equipped with a 3-line 9-bit SPI + 24-bit RGB interface, and a 40-pin FPC pin number, making it compatible with a wide range of industrial and medical equipment, office equipment, laboratory equipment, payment equipment, etc.

### Why choose us

**Supplier Information:** We are Chenghao Lcd, an industry and trade integration company located in Shenzhen, China. We have a monthly supply capacity of 300K pieces, providing you with sufficient stock.

**Quality Assurance:** We have RoHS, CE, and FCC certificates, ensuring that all our products are compliant with relevant safety, health, and environmental regulations.

**Professional Service:** Our experienced product operators are always here to help you with any product-related inquiries, providing you with prompt and professional service.

**Packaging:** All our products are packed in the right way to keep them safe, with different packaging methods designed for varying product sizes.

**Fast Delivery:** We offer a delivery period of 7-15 working days, allowing you to receive the products as soon as possible.

### FAQ

**What is the MOQ of the product?**

Our MOQ is 1 piece.

**What is the touch panel interface of the module?**

The touch panel interface is I2C.

**What is the operating temperature range of the module?**

The operating temperature range is -20 ~ +70 °C (wide temperature).

**What is the life time of the backlight?**

The life time of the backlight is 20000 hours.

**What kind of fields is the module applicable to?**

The module is applicable to various fields such as industrial equipment, medical equipment, office equipment, laboratory equipment, payment equipment, etc.



**Shenzhen ChengHao Optoelectronic Co., Ltd.**



+86 755-27806536



add@chenghaolcm.com



chenghaolcd.com

7th floor, building C5, Hengfeng Industrial City, Hangcheng street, Bao'an District, Shenzhen