



4.3 Inch 480*800 Resolutions IPS LCD Screen With Resistive Touch Panel

Our Product Introduction

Basic Information

- Place of Origin: ShenZhen, China
- Brand Name: Chenghao/Oem
- Certification: ROHS ISO9001 CE
- Model Number: CH430WV17A-T
- Minimum Order Quantity: 100 pcs
- Price: /
- Packaging Details: All the products are packed in right way to keep it safe. For small sizes of products we use tray + carton, For bigger sizes we use foam slot + carton. we also design packages according to customers' requirements
- Delivery Time: 7-15 working days
- Payment Terms: T/T
- Supply Ability: 300Kpcs/month



Product Specification

- Product Name: IPS Lcd Display
- TP Type: RTP
- TP Interface: USB
- Display Mode: IPS/Transmissive/Normally Black
- Resolution: 800*480 Dots
- Pin Number: 55pin
- Luminance: 350cd/m2
- Operating Temp: -20~ +70
- Storage Temp: -30~ +80
- Highlight: 4.3inch IPS LCD Display , 55pin IPS LCD Screen , 350cd IPS LCD Monitor



More Images



4.3 Inch 480*800 Resolutions IPS LCD Screen With Resistive Touch Panel

4.3 Inch IPS LCD Display Screen 480*800 Resolutions with Resistive Touch Panel

1. Specification

ITEM	STANDARD VALUES	UNITS
LCD type	4.3" TFT + RTP	--
Dot arrangement	800*480	dots
Display mode	IPS/Transmissive/Normally Black	--
Viewing Direction	80/80/80/80	--
Module size	61.56(W)×104.65(H)×3.25(T)	mm
Active area	56.16(W)×93.6(H)	mm
Interface	RGB/MCU/SPI	mm

2. Description

ChenghaoLCD CH430WV17A-T is a color LCD module that supports touch function. It is installed with Resistive Touch Screen and supports SPI/RGB/MCU Multi-interface. This Touch Lcd Display adopts IPS display technology, and the Viewing Direction is 80/80/80/80, can work normally in the environment of -20~+70°C for more than 20000H. It is worth mentioning that FPC, backlight luminance, and interface are all customized components, and ChenghaoLCD can modify and customize these components according to the actual needs of users.

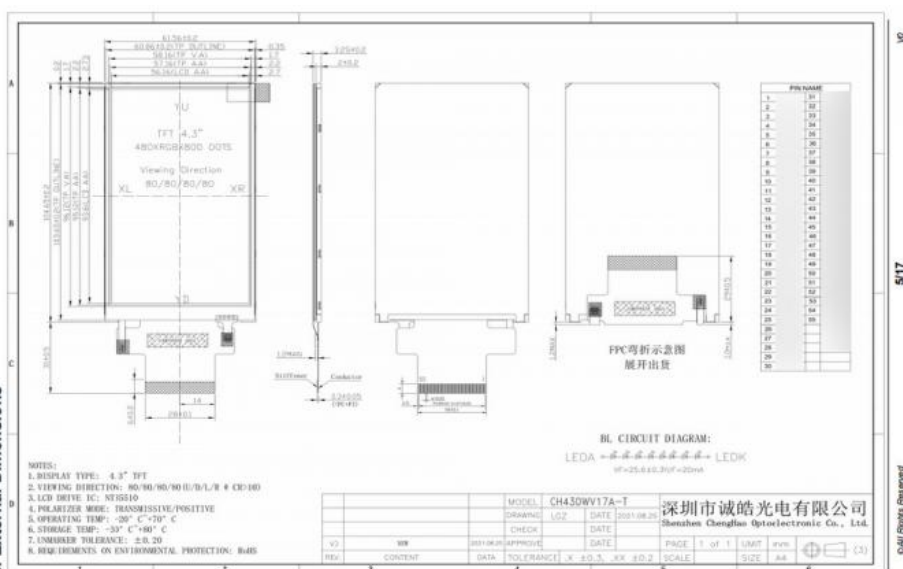
CH430WV17A-T is an All Viewing Direction Lcd display developed for installation in industrial equipment. It adopts vertical screen display and can display videos or images with 16M colors and 480*800 pixels. In addition, this lps lcd display has completed CE/RoHS certification, and buyers enjoy one-year warranty service.

3. Drawings

Notes:

- (1) Display Type : 4.3" Tft+RTP
- (2) Viewing Direction : 80/80/80/80
- (3) TP Type: Resistive Touch Panel
- (4) Polarizer Mode : Transmissive / Negative
- (5) Operating Temp : -20~70 °C
- (6) Storage Temp : -30~80 °C
- (7) Unmarker Tolerance: ± 0.20
- (8) Protection : ROHS

3. External Dimensions



4. Application



5. Our Service

- (1) We are a factory-type supplier with ISO certification. The products we sell have passed strict quality inspection and testing before shipment, and have also passed CE/ROHS certification.
- (2) We have a professional after-sales service team that can provide strong support and logistical technical services for your orders.
- (3) Due to product problems, we replace within 30 days after the product is shipped.
- (4) All goods will be inspected and tested before shipment.
- (5) We have a professional engineer team to provide you with remote online technical support services at any time.

6. FAQ

Q1. What is the MOQ of your products?

A1. The minimum order quantity starts from one piece.

Q2. How can we get samples from you?

A2. Samples are available. Usually we need 2 days to arrange samples. If we have no previous business record with you, we need Bootstrap sample cost and Post Express freight are charged.

Q3. When will you send the parts to me?

A3. We will send the parts to you within 3-5 working days after receiving your payment.

Any other questions, please feel free to contact us. We are here for you!



Shenzhen ChengHao Optoelectronic Co., Ltd.



+86 755-27806536



add@chenghaolcm.com



chenghaolcd.com

7th floor, building C5, Hengfeng Industrial City, Hangcheng street, Bao'an District, Shenzhen