



## 40pin 24 Bit RGB Interface Small Color Lcd Display Module 7inch Wvga

### Our Product Introduction

#### Basic Information

- Place of Origin: ShenZhen, China
- Brand Name: Chenghao/Oem
- Certification: ROHS ISO9001 CE
- Model Number: CH700WV03A-T
- Minimum Order Quantity: 100 pcs
- Price: Negotiation
- Packaging Details: All the products are packed in right way to keep it safe. For small sizes of products we use tray + carton, For bigger sizes we use foam slot + carton. we also design packages according to customers' requirements
- Delivery Time: 7-15 working days
- Payment Terms: T/T
- Supply Ability: 300Kpcs/month

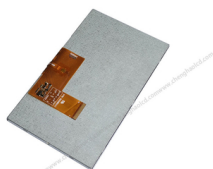


#### Product Specification

- Product Name: High Brightness Lcd Display Module
- Module Type: 7.0" TFT+RTP
- Display Mode: TN/ Transmissive / Normally White
- Viewing Direction: 12 O'clock
- Interface: Rgb
- Operating Temp: -20 ~ +70 °C
- Storage Temp: 30 ~ +80 °C
- Highlight: 700 Nits Lcd Display Module, RGB Interface Lcd Display Module, CH700WV03Q-T Lcd Display Module



#### More Images



## 40 Pin 24 Bit RGB Interface Small Color Lcd Display Module 7inch Wvga

ITEM	STANDARD VALUES	UNITS
LCD type	7.0 inch tft+TP	--
Dot arrangement	800*480	dots
Driver IC	***	--
Module size	164.9(W)×100.0(H)×7.1(T)	mm
Dot Pitch	0.1926 (W)×0.1790 (H)	mm
Operating temperature	- 20 ~ + 70	°C

CHENGHAO Display CH700WV3A-T is a 7 inch color LCD display with resistive touch panel, it adopts 24-bit Parallel RGB Interface, the brightness is 280 cd/m2, and it supports sunlight readability. There is a 800\*480 color display area of this 7 inch tft display, which can display 16.7M colors, and the best viewing angle is 12 O'clock. The Resistive touch screen display can work in the environment of -20~+70 °C, and can accept various customization including FPC/Interface.

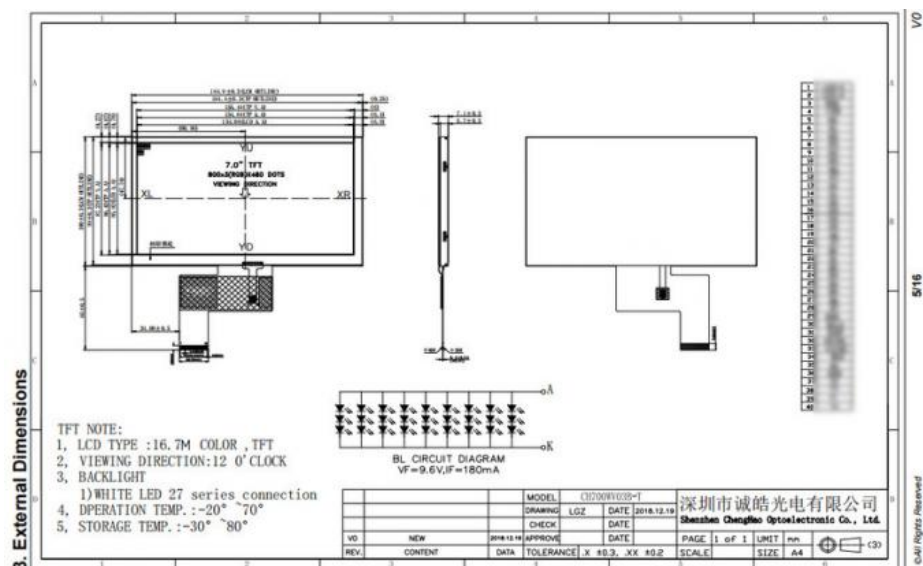
CH700WV03A-T is a wide temperature LCD display used in industrial equipment, its service life exceeds 20000H, and can provide buyers with certificates including CE/RoHS and a warranty of more than one year.

Chenghao Display, as a professional LCD manufacturer, can provide customers with one-stop solutions for LCD. If you are interested in our products and services, please contact us by email or online customer service.



Notes:

- (1) Display Type : 7.0"TFT+RTP
- (2) Viewing Direction : 12:00
- (3) Lcd Drive IC : \*\*\*
- (4) Polarizer Mode : Transmissive
- (5) Operating Temp : -20~70 °C
- (6) Storage Temp : -30~80 °C
- (7) Unmarker Tolerance:  $\pm 0.20$
- (8) Protection : ROHS



#### 4. Quick Detail

LCD type: 7.0" TFT+RTP  
Dot arrangement: 800×3(RGB)×480 dots  
Color Pixel Arrangement: RGB vertical stripe  
Display Mode: TN / Transmissive / Normally white  
Viewing Direction: 12 o'clock  
Gray Scale Inversion Direction: 6 o'clock  
Module size: 164.9(W)×100.0(H)×7.1(T) mm  
TFT Active area: 154.08(W)×85.92(H) mm  
Dot pitch: 0.1926 (W)×0.1790 (H) mm  
Interface: 24-bit Parallel RGB Interface  
Operating temperature: -20 ~ +70 °C  
Storage temperature: -30 ~ +80 °C  
Back Light: 27 White LED  
Weight: TBD g



#### 6. Why Choose Us ?

- (1) We provide at least one year's product warranty service for all cooperative customers' orders, please consult our online customer service for details;
- (2) All our products have undergone strict quality inspection procedures such as power-on test/mirror inspection before leaving the factory, which ensures that our defective rate is reduced by less than 0.3%.
- (3) If the customer needs, we can provide free CE/ROHS and other certification services for cooperative products;
- (4) Each of our TFT lcd Modules has a small amount of stock. If you need samples, you can ask for them from our customer service. We can refund you the sample fee when you establish cooperation with us in the later stage.



Shenzhen ChengHao Optoelectronic Co., Ltd.



+86 755-27806536



add@chenghaolcm.com



chenghaolcd.com

7th floor, building C5, Hengfeng Industrial City, Hangcheng street, Bao'an District, Shenzhen