



## Touch Screen 7 Inch 800\*480 LCD Display Module With Resistive Touch Panel

### Our Product Introduction

#### Basic Information

- Place of Origin: ShenZhen, China
- Brand Name: Chenghao/Oem
- Certification: ROHS ISO9001 CE
- Model Number: CH700WV01G-T-PG
- Minimum Order Quantity: 100 pcs
- Price: Negotiation
- Packaging Details: All the products are packed in right way to keep it safe. For small sizes of products we use tray + carton, For bigger sizes we use foam slot + carton. we also design packages according to customers' requirements
- Delivery Time: 7-15 working days
- Payment Terms: T/T
- Supply Ability: 300Kpcs/month



#### Product Specification

- Product Name: Touch Screen 7 Inch
- Number Of Dots: 800x480
- Part No: CH700WV01G-T-PG
- TFT Interface Type: SPI
- RTP Interface: Usb
- Touch Type: Resistive
- Manufacture Name: Chenghao Optoelectronic
- Support Custom : Yes
- Highlight: Touch Screen LCD Display Module,  
CE LCD Display Module 800x480,  
Lcd Screen Module CH700WV01G-T-PG



#### More Images

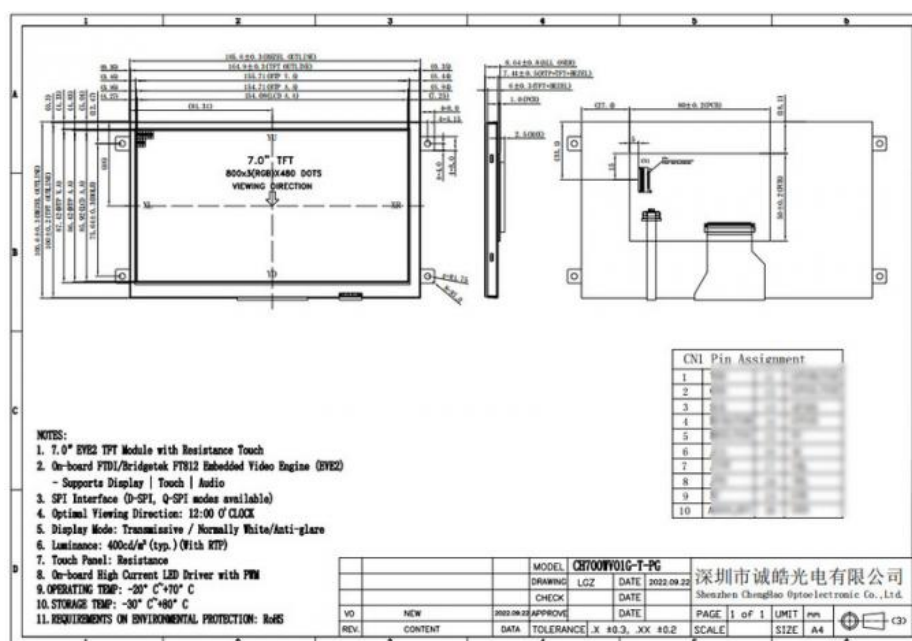


## Touch Screen 7 Inch 800\*480 LCD Display Module With Resistive Touch Panel

MODEL NO.	CH700WV01G-T+PG
Module type	7" TFT+RTP
Display Mode	TN/Transmissive / Normally White
TP type	Resistive Touch Panel
Number of Dots	800*480
Viewing Direction	12:00
Gray Scale Inversion Direction	6:00
Module size	165.6*100.6*8.64 mm
TFT Active area	154.71*85.92 mm
Interface	SPI
Luminance	400 Nits

CHENGHAO Display CH700WV01G-T-PG is a color LCD module with resistive touch screen, with a brightness of 400 nits, supports SPI interface, and the best viewing angle is 12:00. There is a 7 inch color display area with a resolution of 800\*480 and can display 16M colors. The 7 inch touch screen display can adapt to the working environment of -20~ +70, and the average service life exceeds 20000H.

CH700WV01G-T-PG is a wide-temperature liquid crystal display designed and manufactured for installation in medical equipment. It has completed CE and RoHS certification, and can provide buyers with more than one year of warranty service. The touch display modul can modify some functions or components according to customer requirements, including flexible circuit boards, backlight components, interface types, anti-glare, etc. Of course, as a comprehensive enterprise integrating production and sales, Chenghao Optoelectronic can provide customers with professional customized services. You can get interested information by consulting our 24-hour online customer service.



- \* MODEL NO. :CH700WV01G-T-PG
- \* Module Name: Touch Screen 7 Inch 800\*480 LCD Display Module With Resistive Touch Panel
- \* Module type:7inch TFT+RTP(Optional)
- \* Display Mode:TN / Transmissive / Normally White(Optional)
- \* Number of Dots:800\*480
- \* Module size:165.6\*100.6\*8.64 mm
- \* TFT Active area:154.71\*85.92 mm
- \* TFT Interface:SPI(Optional)
- \* Color :16.M
- \* Contrast : 500
- \* VIEWING DIRECTION: 12:00
- \* LCD DRIVE IC:

- \* POLARIZER MODE: TRANSMISSIVE/Normally White
- \* OPERATING TEMP: -20°C~+70°C
- \* STORAGE TEMP: -30°C~+80°C
- \* UNMARKER TOLERANCE:  $\pm 0.20$
- \* REQUIREMENTS ON ENVIRONMENTAL PROTECTION: RoHS

NEW

- \* FPC Number:50pin
- \* Back light Type:White LED
- \* Life Time:20000 Hr
- \* BL CIRCUIT DIAGRAM: white Led
- \* Luminance: 400 cd/m2(Optional)
- \* Touch Panel Type:RTP
- \* Touch Panel Interface:USB
- \* Touch Panel IC: \*\*\*\*\*

## 5. Application



## 6. FAQ

Q1.What is the minimum order quantity for your products?

A1.Minimum order quantity starts from ONE piece .

Q2. How can we get samples from you ?

A2.Samples are available. Normally we take 2 days to arrange samples. If we have no business record with you before, we need to charge boot samples cost and post courier freight.

Q3.When will you send the parts to me?

A3.We will send the parts to you within 3-5 workdays after receiving your payment.

Any other more questions, please feel free to contact us. We are always at your service !



**Shenzhen ChengHao Optoelectronic Co., Ltd.**



+86 755-27806536



add@chenghaolcm.com



chenghaolcd.com

7th floor, building C5, Hengfeng Industrial City, Hangcheng street, Bao'an District, Shenzhen