



40 Pin Lcd Screen 5 Inch 800*480 Resolution Small LCD Touch Screen

Our Product Introduction

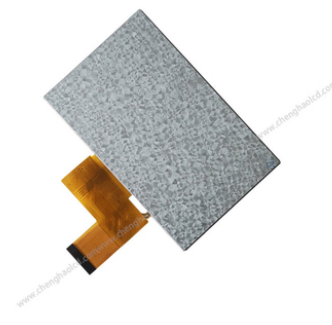
Basic Information

- Place of Origin: ShenZhen, China
- Brand Name: Chenghao/Oem
- Certification: ROHS ISO9001 CE
- Model Number: CH500WV05A-T
- Minimum Order Quantity: 100 pcs
- Price: /
- Packaging Details: All the products are packed in right way to keep it safe. For small sizes of products we use tray + carton, For bigger sizes we use foam slot + carton. we also design packages according to customers' requirements
- Delivery Time: 7-15 working days
- Payment Terms: T/T
- Supply Ability: 300Kpcs/month

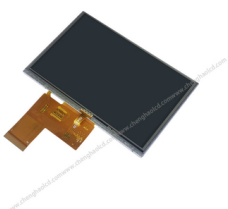


Product Specification

- Product Name: 40 Pin Lcd Screen
- LCM Type: 5.0"IPS
- Dot Arrangement: 800×3(RGB)×480 Dots
- Color PixelArrangement: RGB Vertical Stripe
- Display Mode: IPS/ Transmissive/ Normally Black
- Viewing Direction: 80/80/80/80
- Interface: 24-bit Parallel RGB Interface
- Highlight: 5 Inch 40 Pin Lcd Screen ,
CH500WV05A-T LCD Touch Screen ,
800x480 Resolution Lcd Touch Screen



More Images



Product Description

40 Pin Lcd Screen 5 Inch 800*480 Resolution Small LCD Touch Screen

1. Specification

ITEM	STANDARD VALUES	UNITS
LCD type	5" TFT with RTP	--
Dot arrangement	800×3(RGB)×480	dots
Driver IC	***	--
Module size	120.7(W)×76.3(H)×4.2(T)	mm
Active area	108(W)×64.8(H)	mm
Luminance	250	cd/m2

2. Description

ChengHao Display model CH500WV05A-T is a color active matrix thin film transistor (TFT) liquid crystal display (LCD) that uses amorphous silicon TFT as a switching device. This model is composed of a TFT LCD panel, a touch panel a driving IC, a back-light and FPC.

This TFT LCD has a 5.0 (Horizontal screen) inch diagonally measured active display area with 800*3(RGB)*480 resolution.

The driver used for this project can display 16M colors by R.G.B. signal input. The driver is mounted on the glass and the interconnection via FPC including components to drive the display module. Support 24-bit Parallel RGB Interface.

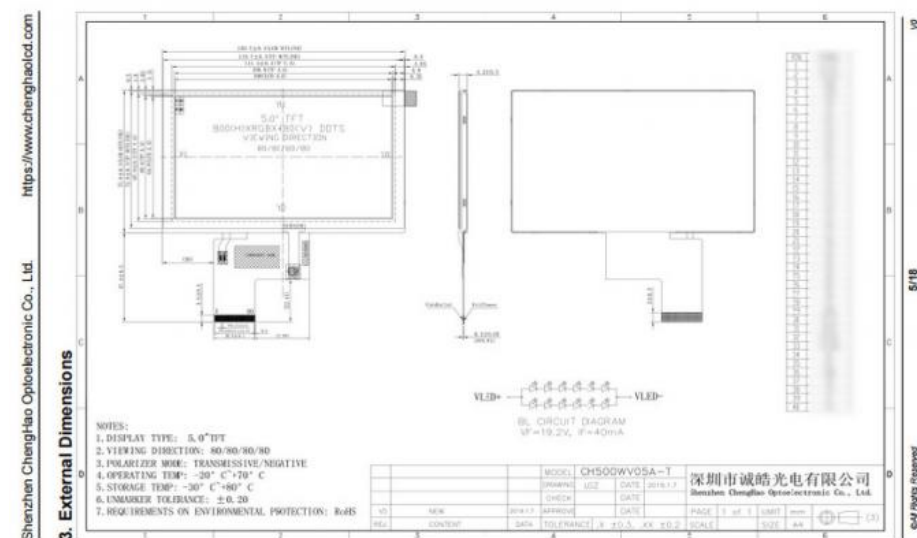
In addition, FPC can also be customized according to customer requirements, such as modifying back-light and FPC structure, interface definition, etc. RoHS Compliance & Halogen Free.

Of course, if this tft lcd matrix 5 inches does not meet your project requirements at all, we can also design a new display solution for you according to your wishes, and you can obtain relevant information by consulting online customer service.

3. Drawings

Notes:

- (1) Display Type : 5.0"TFT
- (2) Viewing Direction : All Viewing Direction
- (3) Lcd Drive IC : ****
- (4) Operating Temp : -20~70 °C
- (5) Storage Temp : -30~80 °C
- (6) Unmarker Tolerance: ±0.20
- (7) Protection : ROHS



4. Quick Detail

Product Name: 40 Pin Lcd Screen 5 Inch 800*480 Resolution Small LCD Touch Screen

Model No: CH500WV05A-T

With or Without TP: Yes

TP Type: RTP

LCD type: 5.0"TFT+TP

Dot arrangement: 800×3(RGB)×480

Color filter array: RGB vertical stripe

Display mode: IPS / Transmissive / Normally Black
Viewing Direction: 80/80/80/80
TFT Driver IC:***
Color: 16M
Contrast: 800:1
Module size: 120.7(W)×76.3(H)×4.2(T) mm
TFT Active area: 108(W)×64.8(H) mm
Dot pitch: 0.135(W)×0.135(H) mm
TFT Interface: 24-bit Parallel RGB Interface
FPC Pin Number: 40
Operating temperature: -20 ~ +60 °C
Storage temperature: -30 ~ +70 °C
Back Light: White LED
Weight: *** g



6. Products Quality Assurance

(1)High-quality raw material supplier :
after-sales guarantee and long-term stable supplier, LCD panel and Driver IC made of A-regulated raw materials.
(2)Other materials:
such as polarizers, backlight film materials, etc. We also use brand new A-regulated raw materials
(3)Strict quality control:
Through rate up to 98.5%,Customer online defect rate as low as 0.3%.
Inspection is done in FOG==>LCM==>LCM+RTP/CTP==> production online inspection ==>Q.C inspection==>aging test 4
hours with load in 60 °C special room (as option)==>OQC.
A product must pass 5 tests before shipment: incoming inspection, 100% online inspection, QC on-site inspection, aging test
and OQC inspection, etc.



Shenzhen ChengHao Optoelectronic Co., Ltd.



+86 755-27806536



add@chenghaolcm.com



chenghaolcd.com

7th floor, building C5, Hengfeng Industrial City, Hangcheng street, Bao'an District, Shenzhen