



OEM 25 Pin TFT LCD Display 480x800 3.97 Inch With Mipi Interface

Our Product Introduction

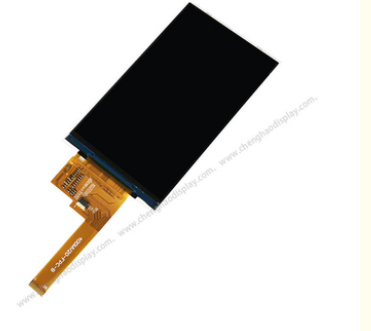
Basic Information

- Place of Origin: ShenZhen, China
- Brand Name: Chenghao/Oem
- Certification: ROHS ISO9001 CE
- Model Number: CH400WV20A
- Minimum Order Quantity: 100 pcs
- Price: /
- Packaging Details: All the products are packed in right way to keep it safe. For small sizes of products we use tray + carton, For bigger sizes we use foam slot + carton. we also design packages according to customers' requirements
- Delivery Time: 7-15 working days
- Payment Terms: T/T
- Supply Ability: 300Kpcs/month



Product Specification

- Product Name: 25 Pin TFT LCD Display
- Resolution: 480x800 Dots
- Viewing Direction: 6:00
- Interface: Mipi
- Back Light: 8pcs White LED
- Luminance: 300 Cd/m2
- FPC Pin Number: 25
- Highlight: OEM Tft Lcd Screen,
480x800 3.97 Inch Tft Lcd Screen,
Mipi Interface Tft Lcd Panel



More Images



Product Description

Oem 25 Pin TFT LCD Display 480x800 3.97 Inch With Mipi Interface

1. Specification

ITEM	STANDARD VALUES	UNITS
LCD type	3.97inch TFT	--
Dot arrangement	480x800	dots
Module size	57.14(W)×96.85(H)×2.0(T)	mm
Active area	51.84(W)×86.4(H)	mm
Operating temperature	- 20 ~ + 70	°C
Storage temperature	- 30 ~ + 80	°C

2. Description

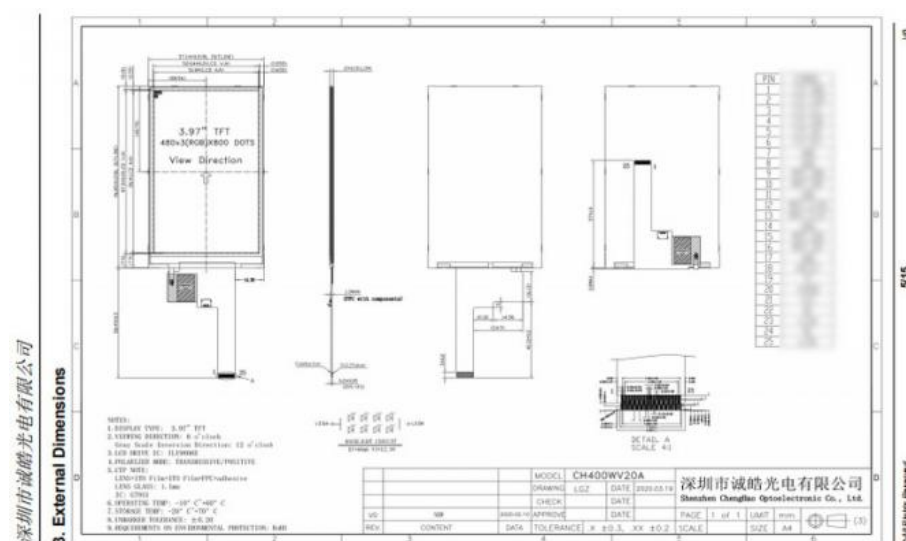
Chenghao Display CH400WV20A is a color active matrix thin film transistor (TFT) liquid crystal display (LCD) that uses amorphous silicon TFT as a switching device. It mainly includes a LCD panel, a flexible circuit board, a backlight component and a driver IC . There is an active display area with a diagonal measurement of 3.97 inches, which can display a color screen of 480*800 pixels and 16M colors. This 480x480 tft lcd module adopts TN / Transmissive / Normally White display mode, the best viewing angle is 6:00, the normal operating temperature is -20~+70, and the service life is as long as 20000 H. In addition, CH400WV20A is a customizable color LCD module, which can be customized according to customer requirements, such as interface definition, flexible circuit board design, brightness adjustment, and screen display processing (anti-glare), etc. Of course, we can also design an exclusive liquid crystal display solution according to your wishes. You can obtain relevant information by consulting online customer service or sending us an email. We look forward to your getting in touch with us as soon as possible.



3. Drawings

Notes:

- (1) Display Type : 3.97 inch tft
- (2) Viewing Direction : 6:00
- (3) Operating Temp : -20~70 °C
- (4) Storage Temp : -30~80 °C
- (5) Unmarker Tolerance: ±0.20
- (6) Protection : ROHS



4. Qucik Detail

Module Name: Oem 25 Pin TFT LCD Display 480x800 3.97 Inch With Mipi Interface

Module No: CH400WV20A
LCD type: 3.97inch TFT
Dot arrangement: 480(RGB)×800 dots
Color filter array: RGB vertical stripe
Display mode: TN / Transmissive / Normally White
Viewing Direction: 6 o'clock
Gray Scale Inversion Direction: 12 o'clock
TFT Driver IC: ILI9806E
Module size: 57.14(W)×96.85(H)×2.0(T) mm
TFT Active area: 51.84(W)×86.4(H) mm
Dot pitch: 0.108(W)×0.108(H) mm
Interface: 2-lane_MIPi DSI
Operating temperature: -10 ~ +60 °C
Storage temperature: -20 ~ +70 °C
Back Light: 8pcs White LED
Weight: TBD g

5. Application



6. FAQ

Q: May i buy samples from you?

A: Yes! You are welcome to place sample order to test our Hight quality and service.

Q: How to place bulk order?

A: 1) Tell us model number, quantity, color and other special requirements.
2) Proforma Invoice will be made and sent to you for approval
3) Production will be arranged once get your payment or deposit.
4) Goods will be delivered as stated on the Proforma Invoice.

Q: How will you deliver my goods to me?

A: We provide as many shipping options as possible, such as DHL, UPS, FEDEX, TNT AND EMS to enable our customers get their goods rapidly at door. We also ship by economick method such as air cargo and sea cargo, direct line, air mail according to customers' request.

Q: What about the quality of your product?

A: We provide unrivald quality: very rigorous testing process for incoming quality control, input process quality control, and final quantitiy control for every piece. We follow QC test procedure, and do 100% FQC to ensure your satisfaction.

Q: Can you provide OEM service?

A: Yes! We can provide professional OEM service.

If you have any technical questions with the goods, please feel freely to contact our technical support dept, or our sales directly.





+86 755-27806536



add@chenghaolcm.com



chenghaolcd.com

7th floor, building C5, Hengfeng Industrial City, Hangcheng street, Bao'an District, Shenzhen