



10pin Small Lcd Display Module 320*480 With 4line 8bit SPI Interface

Our Product Introduction

Basic Information

- Place of Origin: ShenZhen, China
- Brand Name: Chenghao/Oem
- Certification: ROHS ISO9001 CE
- Model Number: CH350HV47B
- Minimum Order Quantity: 100 pcs
- Price: Negotiation
- Packaging Details: All the products are packed in right way to keep it safe. For small sizes of products we use tray + carton, For bigger sizes we use foam slot + carton. we also design packages according to customers' requirements
- Delivery Time: 7-15 working days
- Payment Terms: T/T
- Supply Ability: 300Kpcs/month

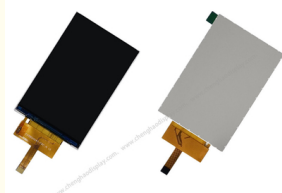


Product Specification

- Product Name: 10pin Small Lcd Display Module
- Module Size: 53.16(W)×81.74(H)×2.17(T) Mm
- Active Area: 48.96(W)×73.44(H) Mm
- Dot Pitch: 0.153(W)×0.153(H) Mm
- Interface: 4line 8bit SPI
- Operating Temperature: -20 ~ +70 °C
- Storage Temperature: -30 ~ +80 °C
- Back Light: 8 White LED
- Highlight: SPI Interface Lcd Display Module, 320x480 10pin LCD Display Panel, CH350HV47B Small Lcd Display Module



More Images



10pin Small Lcd Display Module 320*480 With 4line 8bit SPI Interface

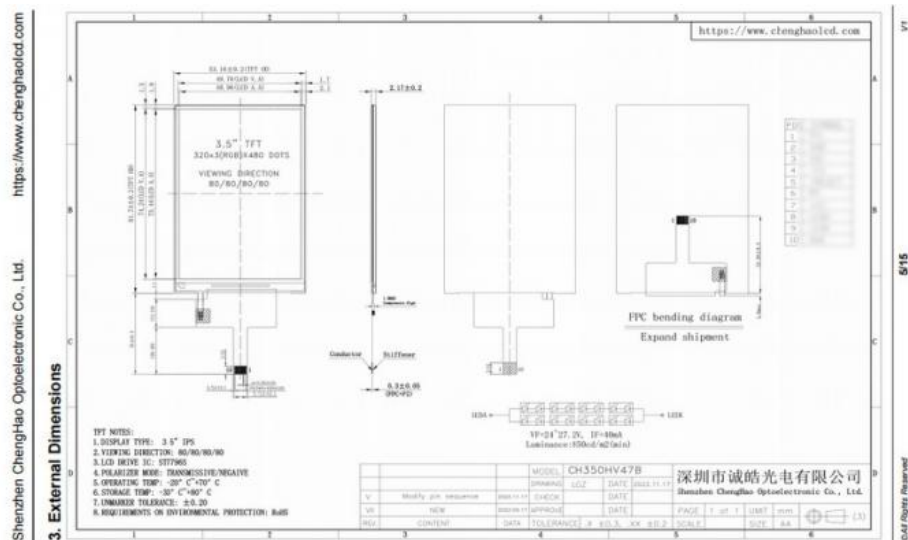
ITEM	STANDARD VALUES	UNITS
LCD type	3.5"IPS	--
Dot arrangement	320(RGB)×480	dots
Driver IC	ST7796S	--
Module size	53.16(W)×81.74(H)×2.17(T)	mm
Dot Pitch	0.153(W)×0.153(H)	mm
Operating temperature	- 20 ~ + 70	°C

ChengHao Display model CH350HV47B is a color active matrix thin film transistor (TFT) liquid crystal display (LCD) that uses amorphous silicon TFT as a switching device. This model is composed of a TFT LCD panel, a driving IC, a back-light and FPC. There is a active display area of this tft lcd panel measuring 3.5 inches diagonally with a resolution of 320*480*3-RGB dots. The driver used for this project is the ST7796 and can display 262k/65k colors by R.G.B. signal input. The driver is mounted on the glass and the interconnection via FPC including components to drive the display module. In addition, the tft lcd 320x480 can also be customized according to customer requirements, such as modifying back-light and FPC structure, interface definition, etc.

RoHS Compliance & Halogen Free.



- (1) Display Type : 3.5"IPS
- (2) Viewing Direction : Allii Viewing Direction
- (3) Lcd Drive IC : ST7796S
- (4) Polarizer Mode : Transmissive
- (5) Operating Temp : -20~70 °C
- (6) Storage Temp : -30~80 °C
- (7) Unmarker Tolerance : ± 0.20
- (8) Protection : ROHS



4. Quick Detail

Product Name: 10pin Small Lcd Display Module 3.5inch 320*480 With 4line 8bit SPI Interface
LCD type: 3.5: IPS
Dot arrangement: 320(RGB)×480 dots
Color filter array: RGB vertical stripe
Display mode: IPS / Transmission / Normally Black
Viewing Direction: 80/80/80/80
Driver IC: ST7796S
Module size: 53.16(W)×81.74(H)×2.17(T) mm
Active area: 48.96(W)×73.44(H) mm
Dot pitch:0.153(W)×0.153(H) mm
Interface: 4line 8bit SPI
Operating temperature: -20 ~ +70 °C
Storage temperature: -30 ~ +80 °C
Back Light: 8 White LED
Weight: TBD g

5. Application



6. FAQ

1.Q: How can I get the samples?

A: Send inquiry → Offer quotation → Confirm quotation & pay tooling charge → Provide drawing → confirm drawing → make tooling & samples → Samples finished → Delivery via freight or sea collect.

2.Q: How long can I expect to get the sample?

A: Contour drawing: 2-4 days Sample time: 7-15 days.

3.Q: Can you design the lcd in accordance with our demand?

A: Sure. We will give you the best tooling charge.

4. Q: How can you guarantee the production quality ?

A: Our production quality follow ISO9000 standard system, stable design team, 10 years experience of QC team and strictly quality control system guarantee the production quality. accept third part Inspection, high&low temperature storage&operating test during high.

5.Q: How to place orders ?

A: If you confirm samples ok, Please send us your purchase order by Email or Fax , Then we will send you an Invoice for deposit payment. We need to know the following information of your order.

(1) Product information-Quantity, model number

(2) Shipping information-Company name, Street address, Phone&Fax number, Destination sea port.

(3) Forwarder's contact details if you have any in China.



Shenzhen ChengHao Optoelectronic Co., Ltd.



+86 755-27806536



add@chenghaolcm.com



chenghaolcd.com

7th floor, building C5, Hengfeng Industrial City, Hangcheng street, Bao'an District, Shenzhen