



5.0 Inch LCD Display Module 480x272 WQVGA 20pin SPI TFT LCD Display

Our Product Introduction

Basic Information

- Place of Origin: ShenZhen, China
- Brand Name: Chenghao/Oem
- Certification: ROHS ISO9001 CE
- Model Number: CH500WQ03A-PA
- Minimum Order Quantity: 100 pcs
- Price: Negotiation
- Packaging Details: All the products are packed in right way to keep it safe. For small sizes of products we use tray + carton, For bigger sizes we use foam slot + carton. we also design packages according to customers' requirements
- Delivery Time: 7-15 working days
- Payment Terms: T/T
- Supply Ability: 300Kpcs/month



Product Specification

- Product Name: WQVGA 5.0 Inch LCD Display Module
- LCM Type: 5"TFT+PCB
- Display Model: TN /Transmissive/ Normally White
- Resolution: 480*272
- Viewing Direction: 12:00 O'clock
- Interface: SPI
- Luminance: 300 Cd/m2
- FPC Number: 20
- Highlight: 300 cd/m2 LCD Display Module, TFT LCD display 12 o'clock, WQVGA TFT LCD display



More Images



Product Description

1. Specification

ITEM	STANDARD VALUES	UNITS
LCD type	5" TFT+PCB	--
Dot arrangement	480x272	dots
Driver IC	****	--
Module size	120.7*75.8*15.45	mm
Active area	110.88*62.83	mm
Operating temperature	- 20 ~ + 70	°C

2. Description

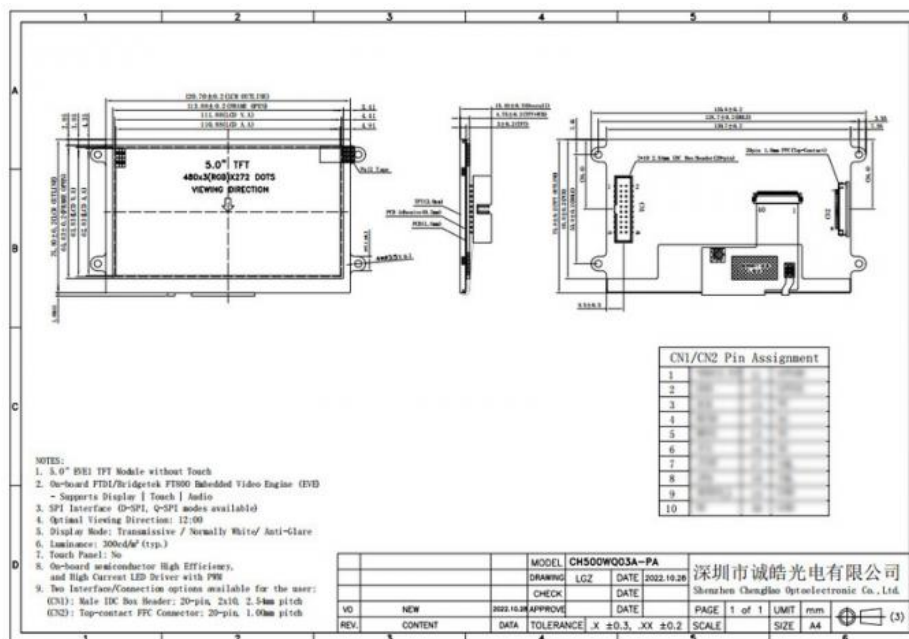
Chenghao Optoelectronic CH500WQ03A-PA is a color LCD module with PCB driver board, using SPI interface, supports 12:00 viewing direction, and the screen brightness is 300 cd/m2. There is a 5.0 inch active display area of this tft lcd module, which can display 480x272 pixel color screen and 16M colors. This 5 inch tft lcd module is a wide-temperature monitor, which can operate normally for more than 20,000 H in an environment with a temperature between -20 ~ +70°C. In addition, this small lcd module can be modified and customized according to customer requirements. The customizable content includes FPC shape, interface definition, screen brightness, touch function, screen anti-glare, etc.

CH500WQ03A-PA is a color LCD module used in face recognition equipment, has completed FCC, CE, RoHS certification, and can provide more than one year of warranty service. If you choose to get more information about this 5 inch lcd module, you can send us an email or consult our online customer service for further information.

3. Drawings

Notes:

- (1) Display Type : 5"TFT+PCB
- (2) Viewing Direction : 12:00
- (3) Lcd Drive IC : ***
- (4) Polarizer Mode : Transmissive/ Positive
- (5) Operating Temp : -20~70 °C
- (6) Storage Temp : -30~80 °C
- (7) Unmarker Tolerance: ±0.20
- (8) Protection : ROHS



4. Quick Detail

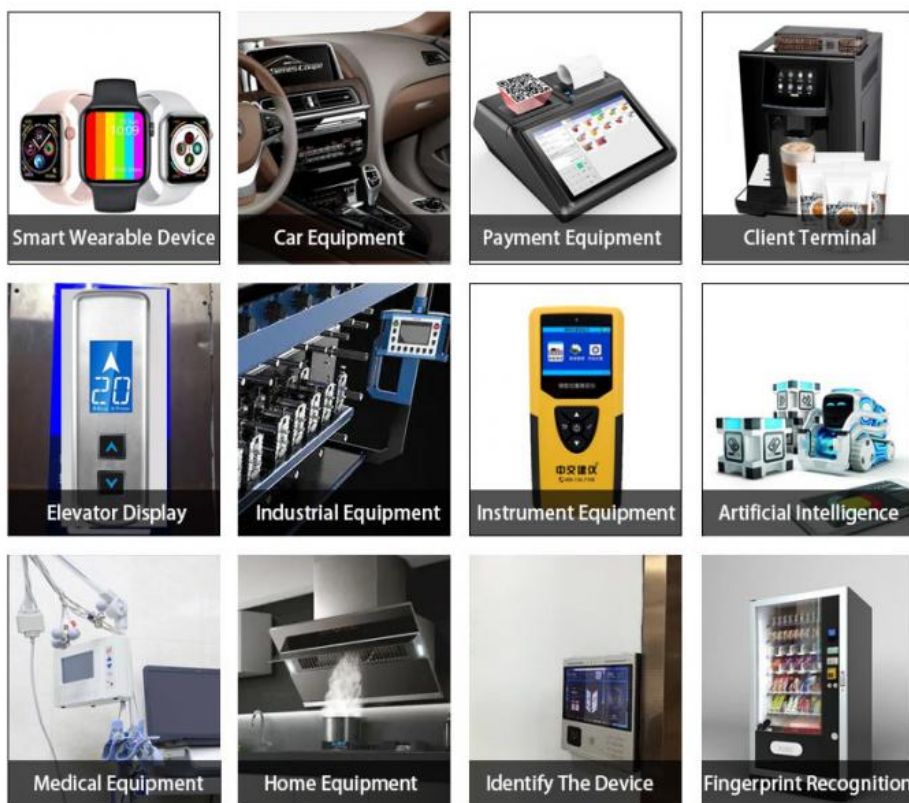
Product Name:WQVGA 5.0 Inch LCD Display Module 480x272 20pin SPI Tft Display

Model No:CH500WQ03A-PA

LCD type:5"TFT+PCB

Dot arrangement:480*272
 Color filter array: RGB vertical stripe
 Display mode: TN/ Transmissive / Normally White
 Viewing Direction:12:00
 TFT Driver IC:***
 Color:16M
 Contrast:500
 Module size:120.7*75.8*15.45 mm
 TFT Active area:110.88*62.83 mm
 TFT Interface:SPI
 FPC Pin Number:20
 Operating temperature: -20 ~ +60 °C
 Storage temperature: -30 ~ +70 °C
 Back Light: White LED

5. Application



6. FAQ

Q: How will you deliver my goods to me?

A: We provide as many shipping options as possible, such as DHL, UPS, FEDEX, TNT AND EMS to enable our customers get their goods rapidly at door. We also ship by economical method such as air cargo and sea cargo, direct line, air mail according to customers' request.

Q: What about the quality of your product?

A: We provide unrivaled quality: very rigorous testing process for incoming quality control, input process quality control, and final quantity control for every piece. We follow QC test procedure, and do 100% FQC to ensure your satisfaction.

Q: Can you provide OEM service?

A: Yes! We can provide professional OEM service.

Q: Do you have any after-sales service?

A: Yes! Our product has professional after-sales service dept. Follow up R.M.A. Items service and upload product firmware and app for you download.

If you have any technical questions with the goods, please feel free to contact our technical support dept, or our sales directly.



Shenzhen ChengHao Optoelectronic Co., Ltd.



+86 755-27806536



add@chenghaolcm.com



chenghaolcd.com

7th floor, building C5, Hengfeng Industrial City, Hangcheng street, Bao'an District, Shenzhen