



Hight Brightness IPS LCD Display 4.3 Inch 480x272 WQVGA 10pin SPI TFT LCD Display

Our Product Introduction

Basic Information

- Place of Origin: ShenZhen, China
- Brand Name: Chenghao/Oem
- Certification: ROHS ISO9001 CE
- Model Number: CH430WQ18A
- Minimum Order Quantity: 100 pcs
- Price: /
- Packaging Details: All the products are packed in right way to keep it safe. For small sizes of products we use tray + carton, For bigger sizes we use foam slot + carton. we also design packages according to customers' requirements
- Delivery Time: 7-15 working days
- Payment Terms: T/T
- Supply Ability: 300Kpcs/month



Product Specification

- Product Name: WQVGA Hight Brightness IPS LCD Display
- LCD Type: 4.3" TFT
- Dot Arrangement: 480(RGB)×272
- Color Filter Array: RGB Vertical Stripe
- Viewing Direction: 80/80/80/80
- Interface: SPI
- Operating Temperature: -20 ~ +70 °C
- Storage Temperature: -30 ~ +80 °C
- Highlight: Hight Brightness IPS LCD Display , IPS LCD Display 480x272, SPI Interface TFT LCD Display



More Images



Product Description

WQVGA Hight Brightness IPS LCD Display 4.3 Inch 480*272 10pin SPI TFT Display

1. Specification

Display Type	4.3" TFT
Display model	IPS / Transmissive / Normally Black
Display Resolution	480(RGB)×272
Contrast	800:1
Overall Size	105.5(W)×67.2(H)×3.0(T) mm
Active Area (A.A)	95.04(W)×53.856(H) mm
Luminance	1000 cd/m ²

2. Description

Chenghao Optoelectronic CH430WQ18A is a sunlight readable color tft display, using SPI interface, when $V_f=24.8v$, $I_f=40mA$, the screen brightness is 1000 cd/m², it can be installed in various outdoor equipment. There is a 4.3 inch dot matrix area of this high brightness tft display, which can display 480x272 pixel color screen and 16M colors. This tft display adopts IPS display mode, supports 80/80/80/80 full viewing angle, and can operate normally for more than 20000 H in the temperature environment of -20~+70°C. In addition, this 4.3 inch tft display can be modified and customized according to customer requirements. The customizable content includes screen brightness, interface definition, touch function, FPC shape and screen anti-glare, etc.

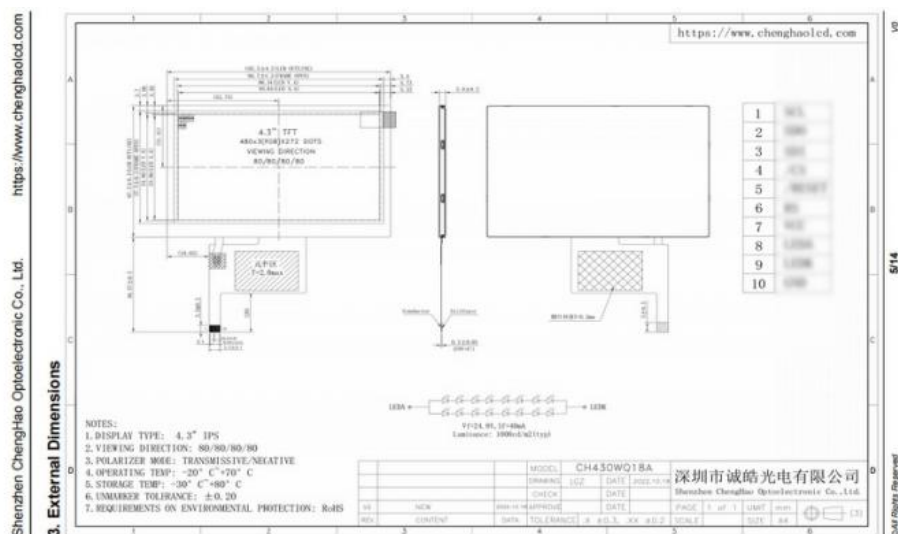
CH430WQ08A is a color tft display installed on access control equipment. It has passed FCC, CE, RoHS certification, and provides more than one year of warranty service. If you want to get more information about this color tft display, welcome to contact us by email or online customer service. Chenghao Optoelectronic CH430WQ18A is a sunlight readable color tft display, using SPI interface, when $V_f=24.8v$, $I_f=40mA$, the screen brightness is 1000 cd/m², it can be installed in various outdoor equipment. There is a 4.3 inch dot matrix area of this high brightness tft display, which can display 480x272 pixel color screen and 16M colors. This tft display adopts IPS display mode, supports 80/80/80/80 full viewing angle, and can operate normally for more than 20000 H in the temperature environment of -20~+70°C. In addition, this 4.3 inch tft display can be modified and customized according to customer requirements. The customizable content includes screen brightness, interface definition, touch function, FPC shape and screen anti-glare, etc.

CH430WQ08A is a color tft display installed on access control equipment. It has passed FCC, CE, RoHS certification, and provides more than one year of warranty service. If you want to get more information about this color tft display, welcome to contact us by email or online customer service.

3. Drawings

Notes:

- (1) Display Type : 4.3" TFT
- (2) Viewing Direction : 80/80/80/80
- (3) Operating Temp : -20~70 °C
- (4) Storage Temp : -30~80 °C
- (5) Unmarker Tolerance: ±0.20
- (6) Protection : ROHS

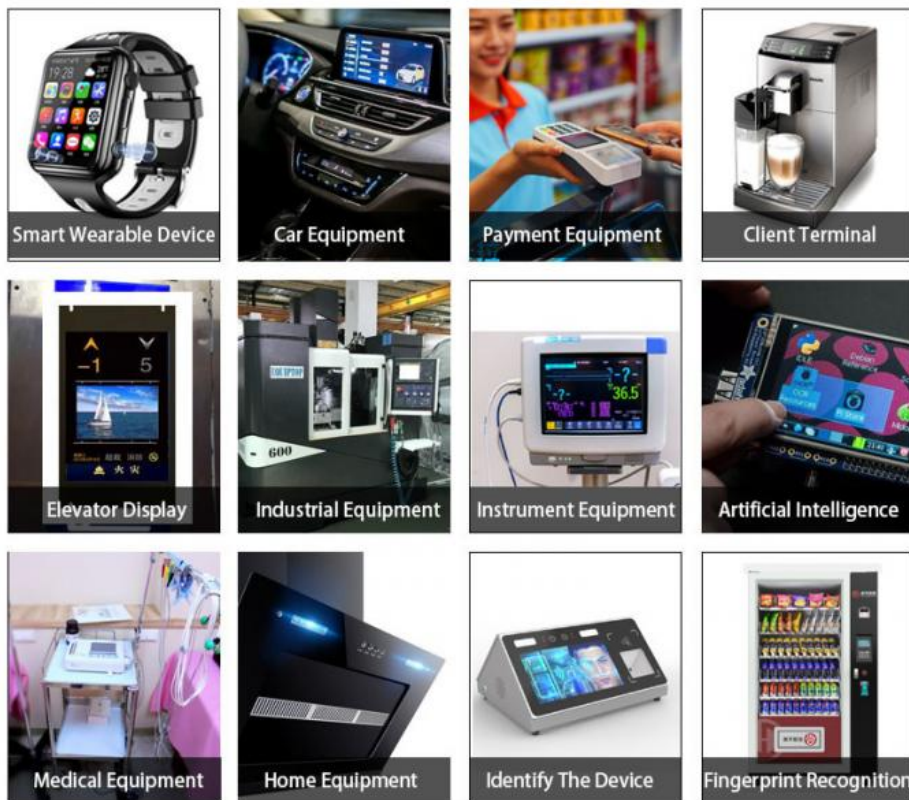


4. Qucik Detail

Product Name:WQVGA Hight Brightness IPS LCD Display 4.3 Inch 480*272 10pin SPI TFT Display

Model No:CH430WQ18A
 LCD type:4.3" TFT
 Dot arrangement:480(RGB)×272 dots
 Color filter array: RGB vertical stripe
 Display mode: IPS / Transmissive / Normally Black
 Viewing Direction:80/80/80/80
 TFT Driver IC:***
 Color:16M
 Contrast:800
 Module size:105.5(W)×67.2(H)×3.0(T) mm
 TFT Active area:95.04(W)×53.856(H) mm
 Dot pitch:0.198 (W)×0.198 (H) mm
 TFT Interface:SPI
 FPC Pin Number:10
 Operating temperature: -20 ~ +60 °C
 Storage temperature: -30 ~ +70 °C
 Back Light:16 pcs White LED

5. Application



6. FAQ

Q: When can i get the quotation?

A: We usually quote within 12 hours after we got your inquiry.

If it is very urgent, please call us or contact us via email, Skype or WhatsApp.

Q: What is your warranty?

A: We provide one year warranty.

Q: May i buy samples from you?

A: Yes! You are welcome to place sample order to test our High quality and service.

Q: How to place bulk order?

A: 1) Tell us model number, quantity, color and other special requirements.

2) Proforma Invoice will be made and sent to you for approval

3) Production will be arranged once get your payment or deposit.

4) Goods will be delivered as stated on the Proforma Invoice.

Q: How will you deliver my goods to me?

A: We provide as many shipping options as possible, such as DHL, UPS, FEDEX, TNT AND EMS to enable our customers get their goods rapidly at door. We also ship by economical method such as air cargo and sea cargo, direct line, air mail according to customers' request.



Shenzhen ChengHao Optoelectronic Co., Ltd.



+86 755-27806536



add@chenghaolcm.com



chenghaolcd.com

7th floor, building C5, Hengfeng Industrial City, Hangcheng street, Bao'an District, Shenzhen