



## WQVGA 4.3 Inch TFT LCD Capacitive Touchscreen 480x272 8080 Interface

### Our Product Introduction

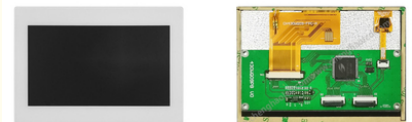
#### Basic Information

- Place of Origin: ShenZhen, China
- Brand Name: Chenghao/Oem
- Certification: ROHS ISO9001 CE
- Model Number: CH430WQ09A-CTA-PB
- Minimum Order Quantity: 100 pcs
- Price: /
- Packaging Details: All the products are packed in right way to keep it safe. For small sizes of products we use tray + carton, For bigger sizes we use foam slot + carton. we also design packages according to customers' requirements
- Delivery Time: 7-15 working days
- Payment Terms: T/T
- Supply Ability: 300Kpcs/month



#### Product Specification

- Product Name: WQVGA 4.3 Inch TFT LCD
- LCM Type: 4.3" TFT+CTP+PCB
- Dot Arrangement: 480(RGB)×272 Dots
- Module Size: 113.5(W)×79.58(H)×8.5(T) Mm
- Active Area: 95.04(W)×53.856(H) Mm
- Dot Pitch: 0.198 (W)×0.198 (H) Mm
- Viewing Direction: 12 O'clock
- TFT Interface: 8/9/16/18/24-bit 8080 Interface
- Highlight: **WQVGA TFT LCD Capacitive Touchscreen, 480x272 TFT LCD Capacitive Touchscreen, 12 o'clock TFT LCD Touch screen**



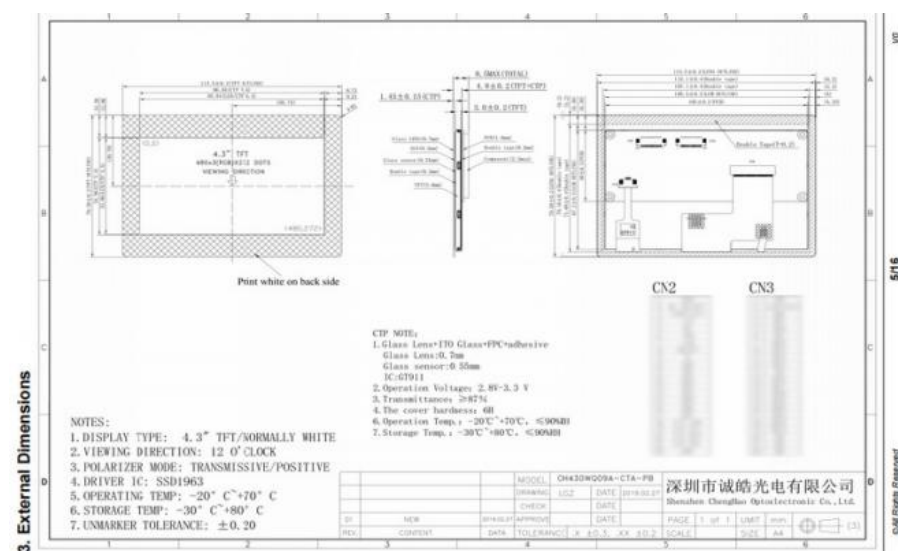
## 1. Specification

ITEM	STANDARD VALUES	UNITS
LCD type	4.3" TFT+CTP+PCB	--
Dot arrangement	480×272	dots
Module size	113.5×79.58×8.5	mm
Active area	95.04×53.856	mm
Operating temperature	- 20 ~ + 70	°C
Storage temperature	- 30 ~ + 80	°C

CH430WQ09A-CTA-PA is a color touch LCD module with high cost performance. It has passed FCC, CE, RoHS certification, and can provide customers with more than one year of warranty service. If you want to know more about this color touch LCD module, you can get more information by email or online consultation with our customer service

Notes:

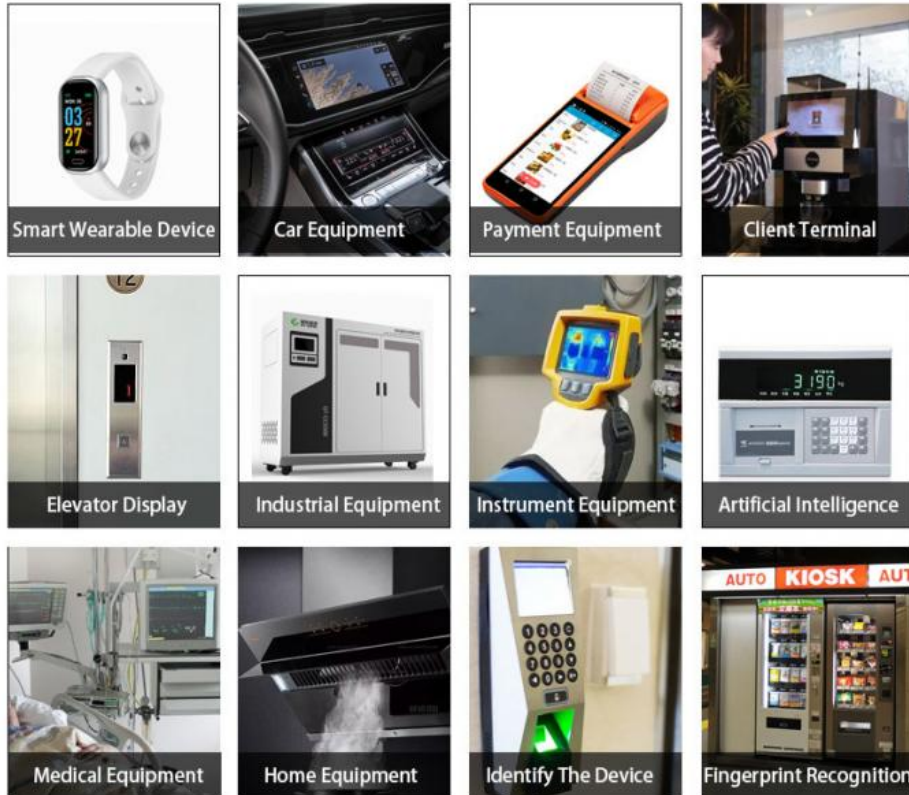
- (1) Display Type : 4.3"TFT+CTP+PCB
- (2) Viewing Direction : 12 o'clock
- (3) Operating Temp : -20~70 °C
- (4) Storage Temp : -30~80 °C
- (5) Unmarker Tolerance:  $\pm 0.20$
- (6) Protection : ROHS



TFT Driver IC:\*\*\*

Color:16M  
Contrast:500  
Module size:113.5(W)×79.58(H)×8.5(T) mm  
TFT Active area:95.04(W)×53.856(H) mm  
Dot pitch:0.198 (W)×0.198 (H) mm  
TFT Interface:8/9/16/18/24-bit 8080 interface  
Operating temperature: -20 ~ +60 °C  
Storage temperature: -30 ~ +70 °C

## 5. Application



## 6. FAQ

Q1: Are you manufacturer ?

A: Yes, we are manufacturer.

Q2: How long is your delivery time?

A: Normally 3-5 working days after payment; Special requirement orders, delivery time is negotiable.

Q3: If the products can't work after receiving it, what should I do?

A: We will replace new items for you at once and then we make the judgement for the issue.

Q4: Do you accept OEM design?

A: Yes, we do. We can design according to your requirement, MOQ usually 100-1000.

Q5: Do you accept pay 30% in advance?

A: Yes, we do. We can start to prepare your goods when receive 30% payment, and send them after get the rest 70% payment.



**Shenzhen ChengHao Optoelectronic Co., Ltd.**



+86 755-27806536



add@chenghaolcm.com



chenghaolcd.com

7th floor, building C5, Hengfeng Industrial City, Hangcheng street, Bao'an District, Shenzhen