



## 2.8 Inch TFT LCD Display 240x320 40 Pin MCU SPI RGB Multi Interface

### Our Product Introduction

#### Basic Information

- Place of Origin: ShenZhen, China
- Brand Name: Chenghao/Oem
- Certification: ROHS ISO9001 CE
- Model Number: CH280QV35B
- Minimum Order Quantity: 100 pcs
- Price: /
- Packaging Details: All the products are packed in right way to keep it safe. For small sizes of products we use tray + carton, For bigger sizes we use foam slot + carton. we also design packages according to customers' requirements
- Delivery Time: 7-15 working days
- Payment Terms: T/T
- Supply Ability: 300Kpcs/month



#### Product Specification

- Product Name: 2.8 Inch TFT LCD Display
- Display Type: 2.8" TFT
- Display Model: TN/Transmissive/Normally White
- Resolution: 240x320 Dots
- Interface: SPI/MCU/RGB
- FPC Number: 40
- Viewing Direction: 6:00
- Operating Temp: -20~ +70
- Highlight: TFT LCD Display 240x320,  
TFT LCD Display 300cd/m2,  
MCU SPI TFT LCD Display Module



#### More Images



## Product Description

### 2.8 Inch TFT LCD Display 240x320 40 Pin MCU SPI RGB Multi Interface

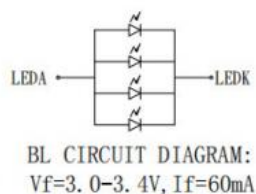
#### 1. Specification

ITEM	STANDARD VALUES	UNITS
LCD type	2.8"TFT	--
Dot arrangement	240*3(RGB)*320	dots
Driver IC	ST7789	--
Module size	50*69.2*2.15	mm
Active area	43.2*57.6	mm
Luminance	300	cd/m2

#### 2. Description

Chenghao Optoelectronic CH280QV35B is a TN color TFT lcd display, using MCU/SPI/RGB interface, it can display 262K/65K color. There is a 3.5 inch active display area of this small screen, which can display video images with 240x320 resolution and supports 6:00 Viewing direction. When  $V_f=3.0\sim 3.4V$ ,  $I_f=60\text{ mA}$ , the brightness of this small color screen reaches 300 cd/m<sup>2</sup>, and it can work continuously for more than 20000 H in an environment with a temperature between  $-20\sim +70^\circ\text{C}$ . In addition, this small color screen can be customized according to customer requirements. The customizable content includes FPC shape structure, interface definition, screen brightness, touch function installation, and anti-glare.

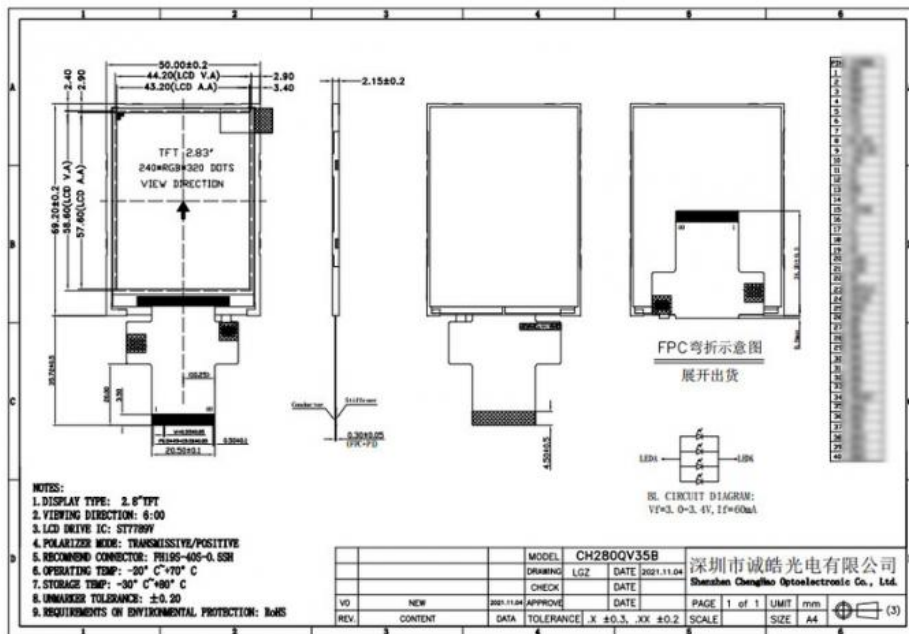
CH280QV35B is a wide-temperature LCD display with high cost performance. It has passed strict CE, FCC, and RoHs certifications, and provides more than one year of warranty service. You can get more information about this small color screen by sending an email or consulting customer service online.



#### 3. Drawings

Notes:

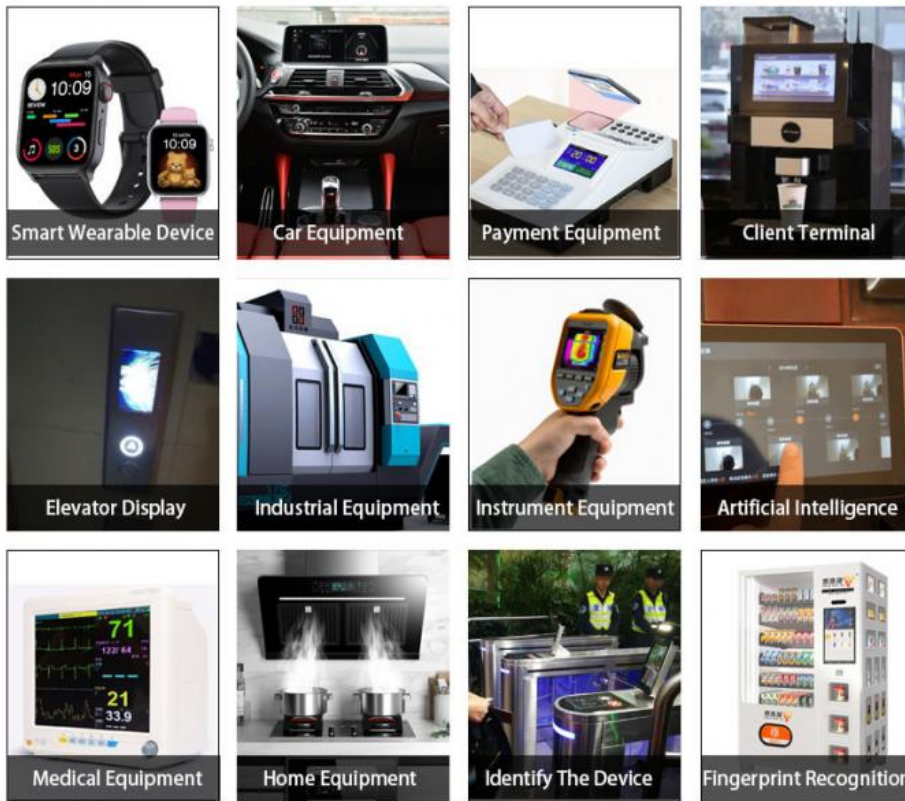
- (1) Display Type : 2.8" TFT
- (2) Viewing Direction : 6:00
- (3) Lcd Drive IC : \*\*\*\*
- (4) Operating Temp :  $-20\sim 70^\circ\text{C}$
- (5) Storage Temp :  $-30\sim 80^\circ\text{C}$
- (6) Unmarker Tolerance:  $\pm 0.20$
- (7) Protection : ROHS



#### 4. Quick Detail

LCM number : CH280QV35B  
 Resolution : 240× 3(RGB) ×320  
 Dot pitch : \*\*\*\*\*  
 Outline dimension : 50\*69.2\*2.15  
 Active Area : 43.2\*57.6  
 View direction: 6:00  
 TFT Electrical Interface : SPI/MCU/RGB  
 Brightness : 300(cd/m2)  
 Driver IC : \*\*\*\*  
 Contrast ratio : 500  
 Backlight Type : white LED  
 Response time : \*\*\*\*\* (ms)  
 Display mode : TN, Normally White, Transmissive  
 Operate temperature : -20-70(°C)  
 Storage temperature : -30-80(°C)  
 Display Colors : 262K/65K  
 Backlight lifetime : 20k hrs (Min.)  
 With/without Touch Panel: Without

#### 5. Application



## 6. FAQ

Q: What is your warranty?

A: We provide one year warranty.

Q: May i buy samples from you?

A: Yes! You are welcome to place sample order to test our Hight quality and service.

Q: How to place bulk order?

A: 1) Tell us model number, quantity, color and other special requirements.

2) Proforma Invoice will be made and sent to you for approval

3) Production will be arranged once get your payment or deposit.

4) Goods will be delivered as stated on the Proforma Invoice.

Q: How will you deliver my goods to me?

A: We provide as many shipping options as possible, such as DHL, UPS, FEDEX, TNT AND EMS to enable our customers get their goods rapidly at door. We also ship by economick method such as air cargo and sea cargo, direct line, air mail according to customers' request.

Q: What about the quality of your product?

A: We provide unrivaled quality: very rigorous testing process for incoming quality control, input process quality control, and final quanltiy control for every piece. We follow QC test procedure, and do 100% FQC to ensure your satisfaction.

Q: Can you provide OEM service?

A: Yes! We can provide professional OEM service.



**Shenzhen ChengHao Optoelectronic Co., Ltd.**



+86 755-27806536



add@chenghaolcm.com



chenghaolcd.com

7th floor, building C5, Hengfeng Industrial City, Hangcheng street, Bao'an District, Shenzhen