



2.4" Small LCD Touch Screen 240x320 50pin SPI TFT LCD Display With Driver Board

Our Product Introduction

Basic Information

- Place of Origin: ShenZhen, China
- Brand Name: Chenghao/Oem
- Certification: ROHS ISO9001 CE
- Model Number: CH240QV29A-T-PA
- Minimum Order Quantity: 100 pcs
- Price: Negotiation
- Packaging Details: All the products are packed in right way to keep it safe. For small sizes of products we use tray + carton, For bigger sizes we use foam slot + carton. we also design packages according to customers' requirements
- Delivery Time: 7-15 working days
- Payment Terms: T/T
- Supply Ability: 300Kpcs/month



Product Specification

- Product Name: 2.4 Small LCD Touch Screen
- Display Type: 2.4" TFT+RTP+PCB
- Resolution: 240x320
- Display Model: TN /Tramissive/ Normally White
- Interface: SPI
- Viewing Direction: 6:00 O'clock
- FPC Number: 50
- Storage Temp: -30 ~ +80
- Operating Temp: -20 ~ +70
- Highlight: 6 o'clock Small LCD Touch Screen ,
Small LCD Touch Screen 240x320,
SPI TFT LCD Display



More Images



Product Description

2.4 Small LCD Touch Screen 240x320 50pin SPI Tft Display With Driver Board

1. Specification

MODEL NO.	CH240QV29A-T-PA
Module type	2.4" TFT+RTP+PCB
Display Mode	TN/Transmissive/ Normally Black
TP type	Resistive touch panel
Number of Dots	240*320
Viewing Direction	6:00
Module size	52.58*62.23*7.65 mm
TFT Active area	36.72*48.96 mm
Interface	SPI
Backlight Type	White LED

2. Description

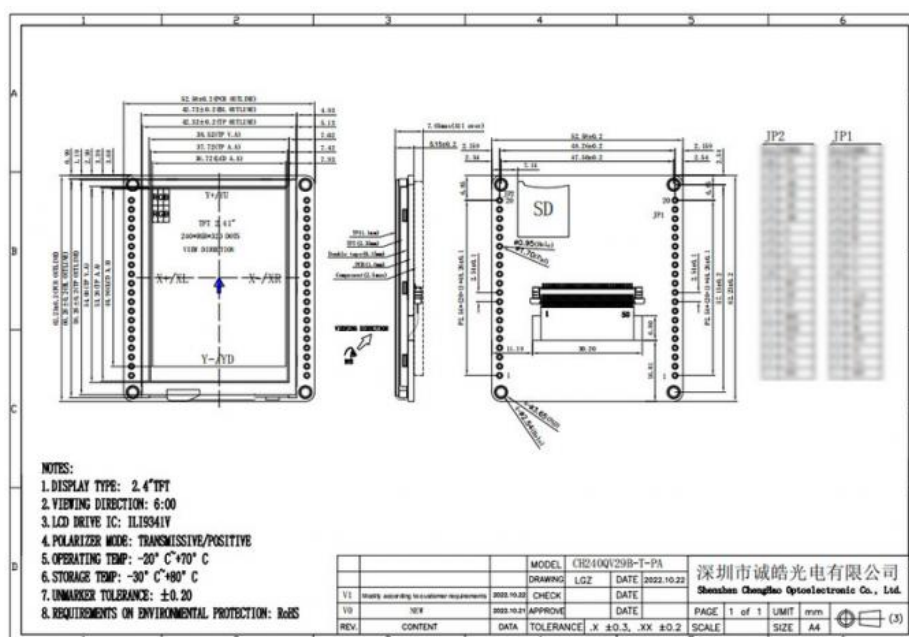
Chenghao Optoelectronic CH240QV29B-T-PA is a color LCD display module that supports screen touch function, including two modules: touch LCD screen and PCB driver board. This touch LCD screen supports SPI interfaces, can display 262K/65K colors, viewing direction is 6:00, and is equipped with a resistive touch panel. There is a 2.4 inch touch display area of this touch lcd display with a resolution of 240*RGB*320, and it can operate continuously for more than 20000 H in an environment with a temperature between -20~+70 °C. The main function of this PCB driver board is to store the driver. In addition, this touch LCD module can be modified and customized according to customer requirements. The supported customization includes lcd interface type, FPC shape, screen brightness, screen surface treatment (anti-glare), etc.

CH240QV29B-T-PA is a color LCD module with stable performance. It has passed strict CE, RoHS and FCC certifications, and can provide customers with more than one year of warranty service. You can get more information about this touch LCD module by sending us an email or consulting online.

Contact Us to get the Detailed Datasheet

[Please Click Here](#)

3. Drawing



4. Quick Detail

Product Name: 2.4 Small LCD Touch Screen 240x320 50pin SPI Tft Display With Driver Board

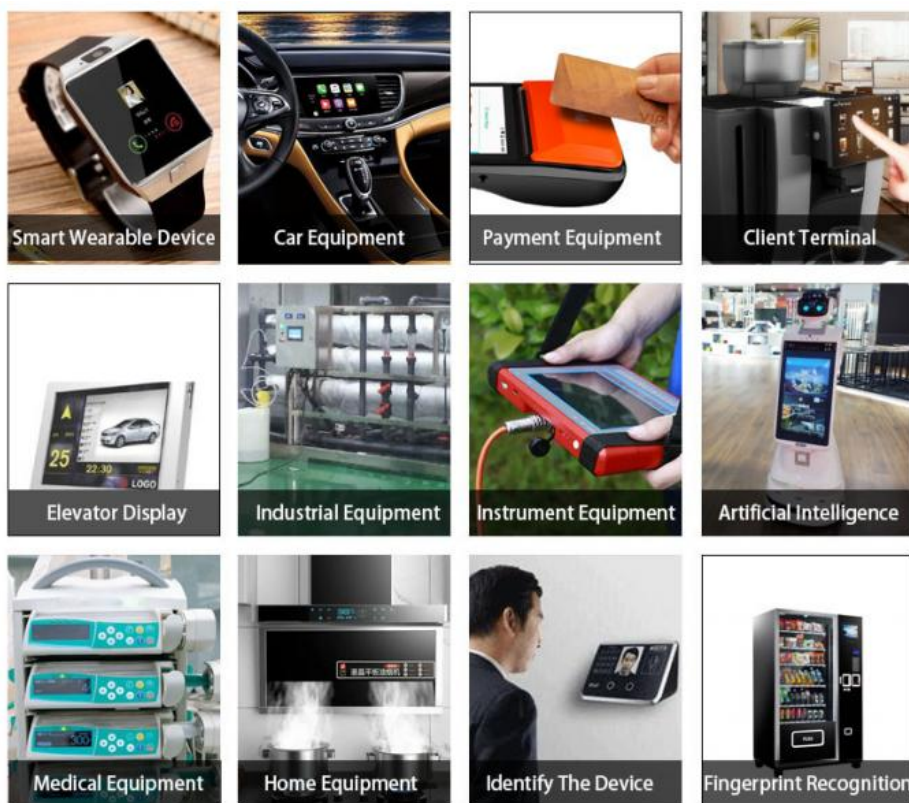
Model No: CH240QV29A-T-PA

TP Type: RTP

TP Interface: usb

LCD type:2.4"TFT+RTP+PCB
 Dot arrangement:240x320
 Color filter array: RGB vertical stripe
 Display mode: TN/ Transmissive / Normally White
 Viewing Direction:6:00
 TFT Driver IC:****
 Color:262K/65K
 Contrast:500
 Module size:52.58*62.23*7.65 mm
 TFT Active area:36.72*48.96 mm
 TFT Interface:SPI
 FPC Pin Number:50pin
 Operating temperature: -20 ~ +60 °C
 Storage temperature: -30 ~ +70 °C
 Back Light: White LED

5. Application



6. FAQ

1.What advantages do you have?

A: Fast delivery time, can support sample services, products are in stock, can be supplied at any time, 24 hours online service, products have passed strict certification, and the buyer has good results.

2.Q: How can I get the samples?

A: Send inquiry → Offer quotation → Confirm quotation & pay tooling charge → Provide drawing → confirm drawing → make tooling & samples → Samples finished → Delivery via freight or sea collect.

3.Q: How long can I expect to get the sample?

A: Contour drawing: 2-4 days Sample time: 7-15 days.

4.Q: Can you design the lcd in accordance with our demand?

A: Sure.We will give you the best tooling charge.

5.Q: How to place orders ?

A: If you confirm samples ok, Please send us your purchase order by Email or Fax , Then we will send you an Invoice for deposit payment. We need to know the following information of your order.

(1) Product information-Quantity,model number

(2) Shipping information-Company name, Street address, Phone&Fax number, Destination sea port.

(3) Forwarder's contact details if you have any in China.



Shenzhen ChengHao Optoelectronic Co., Ltd.



+86 755-27806536



add@chenghaolcm.com



chenghaolcd.com

7th floor, building C5, Hengfeng Industrial City, Hangcheng street, Bao'an District, Shenzhen

