



10.1 Inch IPS LCD Display 1024x600 101 Screen With RGB Interface

Our Product Introduction

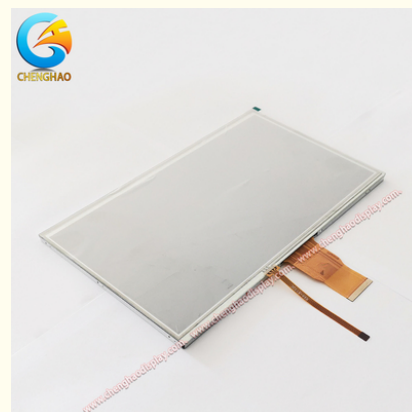
Basic Information

- Place of Origin: ShenZhen, China
- Brand Name: Chenghao/Oem
- Certification: ROHS ISO9001 CE
- Model Number: CH101WS03A-T
- Minimum Order Quantity: 100 pcs
- Price: Negotiation
- Packaging Details: All the products are packed in right way to keep it safe. For small sizes of products we use tray + carton, For bigger sizes we use foam slot + carton. we also design packages according to customers' requirements
- Delivery Time: 7-15 working days
- Payment Terms: T/T
- Supply Ability: 300Kpcs/month

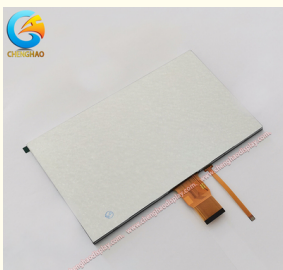


Product Specification

- Product Name: 10.1 Inch Ips Lcd Display
- Display Type: 10.1" TFT
- Viewing Direction: 80/80/80/80
- Operating Temp: -20~ +70
- Luminance: 500 Nits
- Display Model: IPS /Transmissive/ Normally Black
- FPC Number: 50
- Highlight: 10.1 Inch IPS LCD Display , RGB Interface IPS LCD Display , 500 nits TFT lcd Display



More Images



Product Description

10.1 Inch Ips Lcd Display 1024x600 101 Screen With RGB Interface

1. Specification

Module type	10.1 inch TFT lcd
Display Mode	IPS/Transmissive/Normally Black
Number of Dots	1024x600 dots
Viewing Direction	80/80/80/8/0
Module size	235*143*4.8
TFT Active area	222.72*125.28
Interface	RGB
Backlight Type	White LED
Luminance	500 cd/m2

2. Description

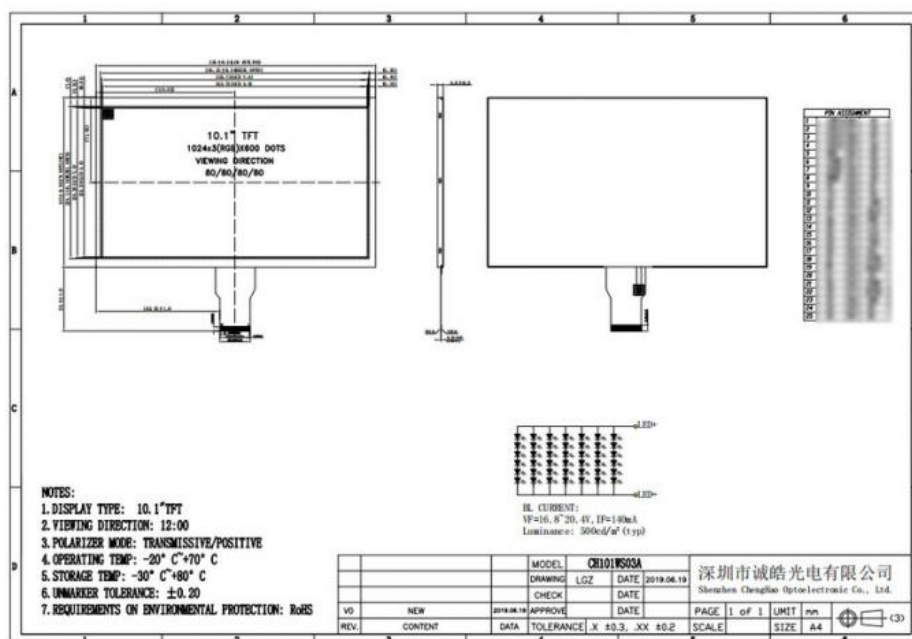
Chenghao Optoelectronics CH101WS03A is a color IPS liquid crystal display that uses an RGB interface, with a brightness of 500cd/m2 and a FPC quantity of 50 pins. It can operate normally for over 50000 hours in the temperature range of -20~+70 °C. This high-definition monitor has a 10.1-inch tft-LCD panel that can display video images with a resolution of 1024x600. Users can clearly read the content on the screen from any perspective.

If some functional parameters of this monitor do not meet your project requirements, we can modify and customize them according to your requirements. Customization content includes FPC shape, screen brightness, interface definition, touch function installation, etc.

3. Drawings

Notes:

- (1) Display Type : 10.1 inch TFT
- (2) Viewing Direction : Full Viewing Direction
- (3) Lcd Drive IC : *****
- (4) Polarizer Mode : Transmissive/ Negative
- (5) Operating Temp : -20~ +70 °C
- (6) Storage Temp : -30~ +80 °C
- (7) Unmarker Tolerance: ± 0.20
- (8) Protection : ROHS



4. Quick Detail

- * MODEL NO. :CH101WS03A-T
- * Module type:10.1"TFT Lcd
- * Display shape: horizontal screen
- * Display Mode: IPS/ Transmissive / Normally Black
- * Number of Dots:1024*600

- * Module size:235*143*4.8 mm
- * TFT Active area:222.72*125.28 mm
- * TFT Interface:RGB
- * Color : 16.7M
- * Contrast : 800:1
- * VIEWING DIRECTION: 80/80/80/80
- * LCD DRIVE IC: ****
- * OPERATING TEMP: -20°C~+70°C
- * STORAGE TEMP: -30°C~+80°C
- * UNMARKER TOLERANCE: ±0.20
- * REQUIREMENTS ON ENVIRONMENTAL PROTECTION: RoHS

NEW

- * FPC Number:50 pin
- * Back light Type:White LED
- * Life Time: 50000 Hr
- * BL CIRCUIT DIAGRAM:
- * Luminance: 500 cd/m2

5. Application



6. FAQ

Q1: Do you accept customization displays and touch screens?

A: Sure, you can customization the FPC,Backlight and the touch screen.

Q2: What type of interface is your display screen?

A: Small sized of displays generally support SPI,MCU,RGB,MIPI.Medium sized displays generally support LVDS,MIPI,EDP.Different specifications use different interfaces.

Q3: Do you used capacitive touch screen or resistive touch screen.

A: We have capacitive touch screen and resistive touch screen .

Q4: What is your sample policy?

A: If there is stock,you can sample at any time,if there is no stock,it will take some time,and then wait for the materials to come back to sample. But the customer needs to pay the sample fee and express fee.

Q5: How long is your lead time for mass production?

A: It takes about 20 - 45 working days for mass production,depending on the model and order quantity.



Shenzhen ChengHao Optoelectronic Co., Ltd.



+86 755-27806536



add@chenghaolcm.com



chenghaolcd.com

7th floor, building C5, Hengfeng Industrial City, Hangcheng street, Bao'an District, Shenzhen