



## 9 Inch Color LCD Screen 1024x600 50 Pin 24bit RGB LCD Display Module

### Our Product Introduction

#### Basic Information

- Place of Origin: ShenZhen, China
- Brand Name: Chenghao/Oem
- Certification: ROHS ISO9001 CE
- Model Number: CH900WS01A
- Minimum Order Quantity: 100 pcs
- Price: Negotiation
- Packaging Details: All the products are packed in right way to keep it safe. For small sizes of products we use tray + carton, For bigger sizes we use foam slot + carton. we also design packages according to customers' requirements
- Delivery Time: 7-15 working days
- Payment Terms: T/T
- Supply Ability: 300Kpcs/month

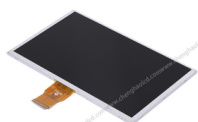


#### Product Specification

- Product Name: 9 Inch Color LCD Screen
- LCD Type: 9.0" TFT
- Dot Arrangement: 1024×3(RGB)×600
- Display Mode: TN / Transmissive
- Viewing Direction: 12:00
- Interface: RGB
- Operating Temp: -20~+70 °C
- Storage Temp: -30~+80 °C
- Highlight: TN Transmissive Color LCD Screen , 200cd/m2 Color LCD Screen , 1024x600 LCD Display Module



#### More Images



## Product Description

### 9 Inch Color LCD Screen 1024x600 50 pin 24bit RGB LCD Display Module

#### 1. Specification

Module type	9"TFT
Display Mode	TN/Transmissive/Normally white
Number of Dots	1024*3(RGB)*600
Viewing Direction	12 o'clock
Gray Scale Inversion Direction	6 o'clock
Module size	211.1(W)*126.5(H)*3.5(T)mm
TFT Active area	196.61(W)*114.15(H)mm
TFT Dot pitch	0.192(W)*0.19025(H)mm
Interface	24-bit RGB
Backlight Type	White LED
Luminance	200cd/m2

#### 2. Description

Chenghao Optoelectronic CH900WS01A is a 9 inch color LCD screen installed on a vending machine, with a resolution of 1024\*600, the diagonal length of its display area is 9.0 inches, and it can display 16.7M colors. This 9 inch color LCD screen is TN TFT, users can read the screen content clearly from 12 O'clock Viewing direction. External devices can interact with the LCD screen through 24-bit Parallel RGB Interface.

CH900WS01A is a very cost-effective color LCD screen, which has passed CE and RoHs certification, and can operate normally over 20k Hr in the environment of -20~+70 °C.

FPC and backlight can be customized according to customer requirements. The customizable content includes FPC shape, backlight brightness, interface definition, installation touch function, etc.

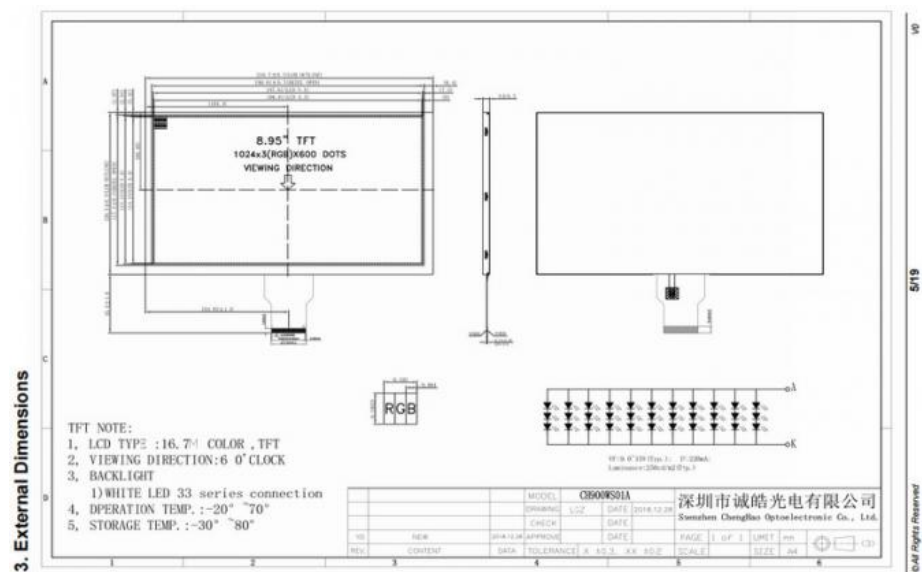


#### 3. Drawings

Notes:

- (1) Display Type : 9.0 inch TFT
- (2) Viewing Direction : 12 o'clock
- (3) Lcd Drive IC : \*\*\*
- (4) Polarizer Mode : \*\*\*

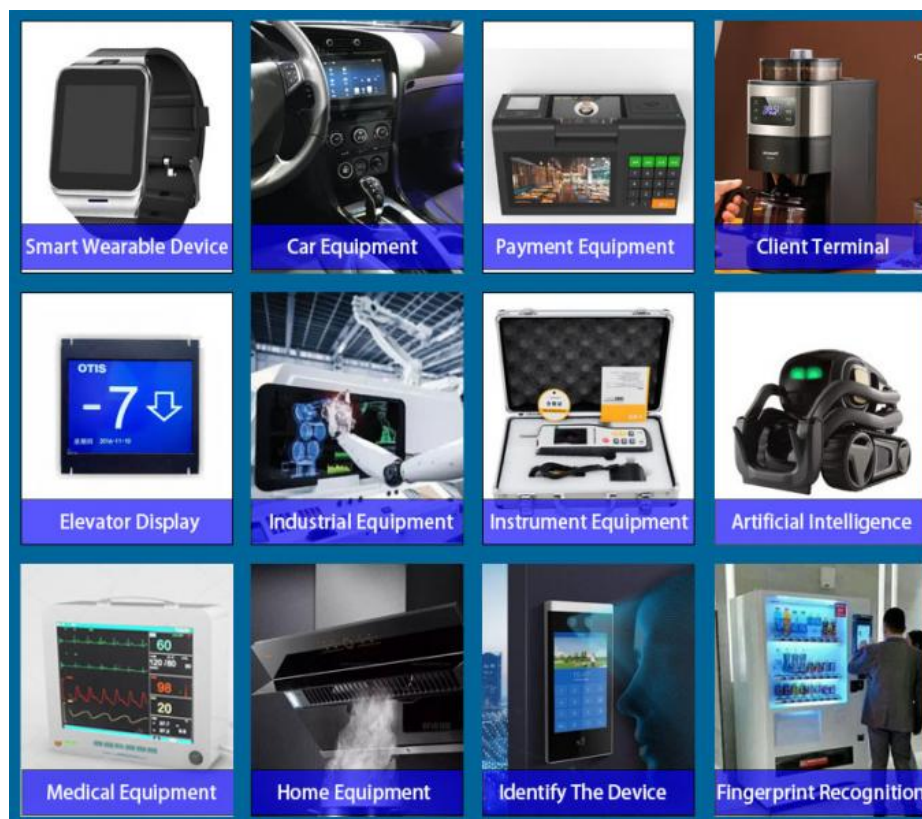
- (5) Operating Temp : -20~70 °C  
 (6) Storage Temp : -30~80 °C  
 (7) Unmarker Tolerance: ±0.20  
 (8) Protection : ROHS



#### 4. Quick Detail

LCD type: 9.0"TFT  
 Dot arrangement: 1024×3(RGB)×600 dots  
 Color Pixel Arrangement: RGB vertical stripe  
 Display Mode: TN / Transmissive / Normally white  
 Viewing Direction: 12 o'clock  
 Gray Scale Inversion Direction: 6 o'clock  
 Module size: 210.7(W)×126.5(H)×5.0(T) mm  
 Active area: 196.61(W)×114.15(H) mm  
 Dot pitch: 0.192 (W)×0.19025 (H) mm  
 Interface: 24-bit Parallel RGB Interface  
 Operating temperature: -20 ~ +70 °C  
 Storage temperature: -30 ~ +80 °C  
 Weight: TBD g

#### 5. Application



## 6. FAQ

Q: May i buy samples from you?

A: Yes! You are welcome to place sample order to test our Hight quality and service.

Q: How to place bulk order?

A:

- 1) Tell us model number, quantity, color and other special requirements.
- 2) Proforma Invoice will be made and sent to you for approval
- 3) Production will be arranged once get your payment or deposit.
- 4) Goods will be delivered as stated on the Proforma Invoice.

Q: How will you deliver my goods to me?

A: We provide as many shipping options as possible, such as DHL, UPS, FEDEX, TNT AND EMS to enable our customers get their goods rapidly at door. We also ship by economick method such as air cargo and sea cargo, direct line, air mail according to customers' request.

Q: What about the quality of your product?

A: We provide unrivaled quality: very rigorous testing process for incoming quality control, input process quality control, and final quantiy control for every piece. We follow QC test procedure, and do 100% FQC to ensure your satisfication.

Q: Can you provide OEM service?

A: Yes! We can provide professional OEM service.

Q: Do you have any after-sales service?

A: Yes! Our productt has professional after-sales service dept. Follow up R.M.A. Items service and upload product fireware and app for you download.



**Shenzhen ChengHao Optoelectronic Co., Ltd.**



+86 755-27806536



add@chenghaolcm.com



chenghaolcd.com

7th floor, building C5, Hengfeng Industrial City, Hangcheng street, Bao'an District, Shenzhen