

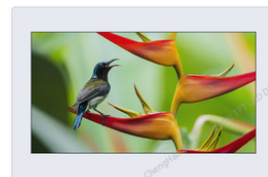


## 7 Inch Touch LCD Display 800x480 TFT LCD Capacitive Touchscreen

### Our Product Introduction

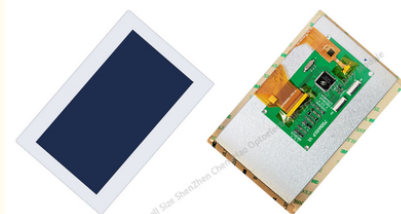
#### Basic Information

- Place of Origin: ShenZhen, China
- Brand Name: Chenghao/Oem
- Certification: ROHS ISO9001 CE
- Model Number: CH700WV01-CT
- Minimum Order Quantity: 100 pcs
- Price: Negotiation
- Packaging Details: All the products are packed in right way to keep it safe. For small sizes of products we use tray + carton, For bigger sizes we use foam slot + carton. we also design packages according to customers' requirements
- Delivery Time: 7-15 working days
- Payment Terms: T/T
- Supply Ability: 300Kpcs/month



#### Product Specification

- Product Name: 7 Inch Touch LCD Display
- Lcd Type: 7.0 Inch TFT +CTP
- Resolution: 800\*480
- Viewing Direction: 12:00
- TFT Interface: MCU
- CTP Interface: I2c
- Luminance: 250
- Pin Number: 50 Pin
- Highlight: Touch LCD Display 800x480,  
CTP Touch LCD Display,  
12 o'clock TFT LCD Capacitive Touchscreen



## Product Description

### 7 Inch Touch LCD Display 800x480 TFT LCD Capacitive Touchscreen

#### 1. Specification

MODEL NO.	CH700WV01B-CT
Module type	7" TFT + CTP + PCB
Display Mode	TN/Transmissive/Normally white
CTP type	G+G
Number of Dots	800*3(RGB)*480
Viewing Direction	12 o'clock
Gray Scale Inversion Direction	6 o'clock
Module size	180.0(W)*119.0(H)*12.0(T)mm
TFT Active area	154.08(W)*85.92(H)mm
TFT Dot pitch	0.1926(W)*0.1790(H)mm
Interface	TFT:8/9/16/18/24-bit 8080 CTP:I2C
Backlight Type	White LED
Luminance	250cd/m2

#### 2. Description

Chenghao Optoelectronic CH700WV01B-CT is a 7 inch touch LCD display used in smart coffee machines. It is equipped with a touch panel, and users can interact with the device through the touch panel. This touch LCD screen has passed the experimental tests of anti-static (EMC), anti-aging, high and low temperature, etc. It can continuously run for more than 20k Hr in the environment of -20~+70 °C, and its anti-static ability reaches 15Kv, And passed CE, RoHS certification.

CH700WV01B-CT is a very cost-effective 7 inch touch LCD screen (horizontal screen), using the combination of lcd panel+TP, the lcd panel belongs to tft lcd, can display 800\*480 pixel video animation, supports 8 /9/16/18/24-bit 8080 interface. The TP is a resistive touch panel and uses a usb interface.

For most LCD screen buyers, customization service is an essential part of the process of purchasing LCD screens.

CH700WV01B-CT can also be modified and customized according to customer requirements. The customized content includes FPC shape, backlight brightness, touch panel modification (RTP=>CTP) or removal, screen surface treatment (anti-glare), etc.

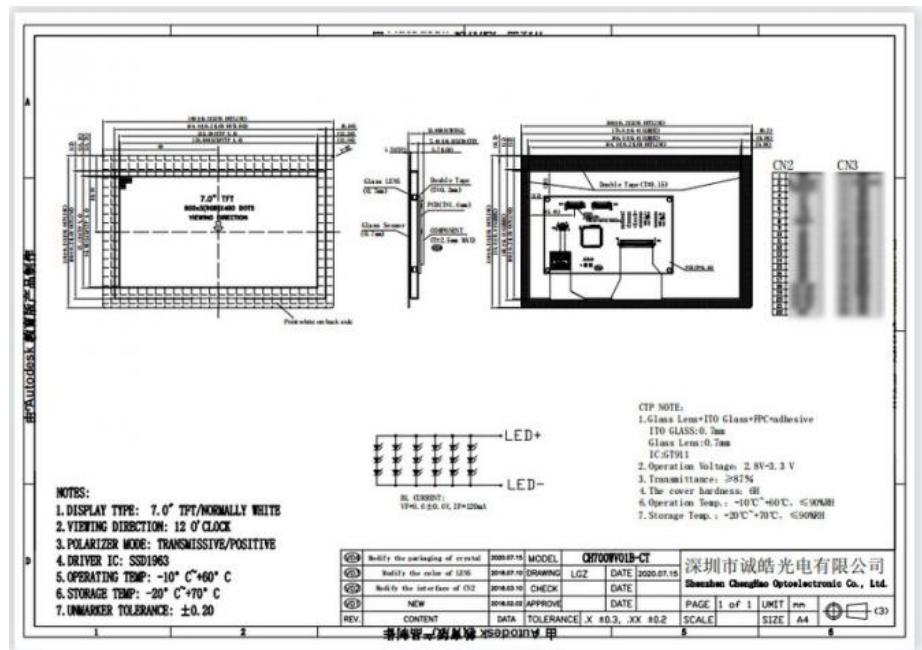


#### 3. Drawings

Notes:

- (1) Display Type : 7.0 inch tft lcd
- (2) Viewing Direction : 12:00

- (3) Lcd Drive IC : \*\*\*
- (4) Polarizer Mode : \*\*\*\*
- (5) Storage Temp : -30~80 °C
- (6) Unmarker Tolerance:  $\pm 0.20$
- (7) Protection : ROHS



#### 4. Quick Detail

Attribute Value

Diagonal Display Size: 7.0 inch

TFT Interface Type: 8/9/16/18/24-bit 8080

CTP Interface Type: I2C

Resolution: 800 x 480pixels

Touch Screen: Yes

Touch Screen Type: Capacitive

Backlight Type: LED

Display Mode: Transmissive

Dimensions: 180.0(W)\*119.0(H)\*12.0(T)mm

Display Matrix Technology: TFT

Minimum Operating Temperature:  $-20^{\circ}\text{C}$

Maximum Operating Temperature:  $+70^{\circ}\text{C}$

Brightness: 250 cd/m<sup>2</sup>

Number of Colours: 16.7 Million

Standards Met: CE, RoHS Compliant

Response Time: 10ms

Operating Temperature Range:  $-20 \rightarrow +70^{\circ}\text{C}$

Contrast Ratio: 500

Display Type: LCD TFT

#### 5. Application



## 6. FAQ

Q:Payment methods?

T/T, Paypal and Western union etc.

For samples: payment in advance.

For mass production: 50% deposit and 50% balance before shipment.

Q: What is the lead time of the products?

A:Samples in stock will be sent within 3 days after payment.

Two to Four weeks for mass production

Q:How long is the warranty period?

A:Generally the warranty period is one year. It depends on different products.

Q:What is the Product MOQ?

A:Different product has the different MOQ, please contact us sales for detailed information.

Q: What's your after-sale service?

A: If any problems, you will get our reply within 24 hours. Solution will be offered instantly by our professional technical team.

Q:Can you provide OEM service?

A:yes, we can provide both OEM and ODM service,can customize products according to the drawings you supply



**Shenzhen ChengHao Optoelectronic Co., Ltd.**



+86 755-27806536



add@chenghaolcm.com



chenghaolcd.com

7th floor, building C5, Hengfeng Industrial City, Hangcheng street, Bao'an District, Shenzhen