



5.0 Inch Color Display 800x480 40pin TFT LCD Capacitive Touchscreen

Our Product Introduction

Basic Information

- Place of Origin: ShenZhen, China
- Brand Name: Chenghao/Oem
- Certification: ROHS ISO9001 CE
- Model Number: CH500WV03A-CTB
- Minimum Order Quantity: 100 pcs
- Price: /
- Packaging Details: All the products are packed in right way to keep it safe. For small sizes of products we use tray + carton, For bigger sizes we use foam slot + carton. we also design packages according to customers' requirements
- Delivery Time: 7-15 working days
- Payment Terms: T/T
- Supply Ability: 300Kpcs/month



Product Specification

- Product Name: 5.0 Inch Color Display
- Shape: Horizontal Screen
- Touch Panel Type: Capacitive Touch Panel
- Resolution: 800x480
- Luminance: 300 Cd/m²
- Color: 16.7M
- Viewing Direction: 12:00
- Pin Number: 40
- Highlight: Capacitive Touch color LCD display,
300 cd/m² color LCD display,
40pin TFT LCD Capacitive Touchscreen



Product Description

5.0 inch color display 800x480 40pin TFT LCD Capacitive Touchscreen

1. Specification

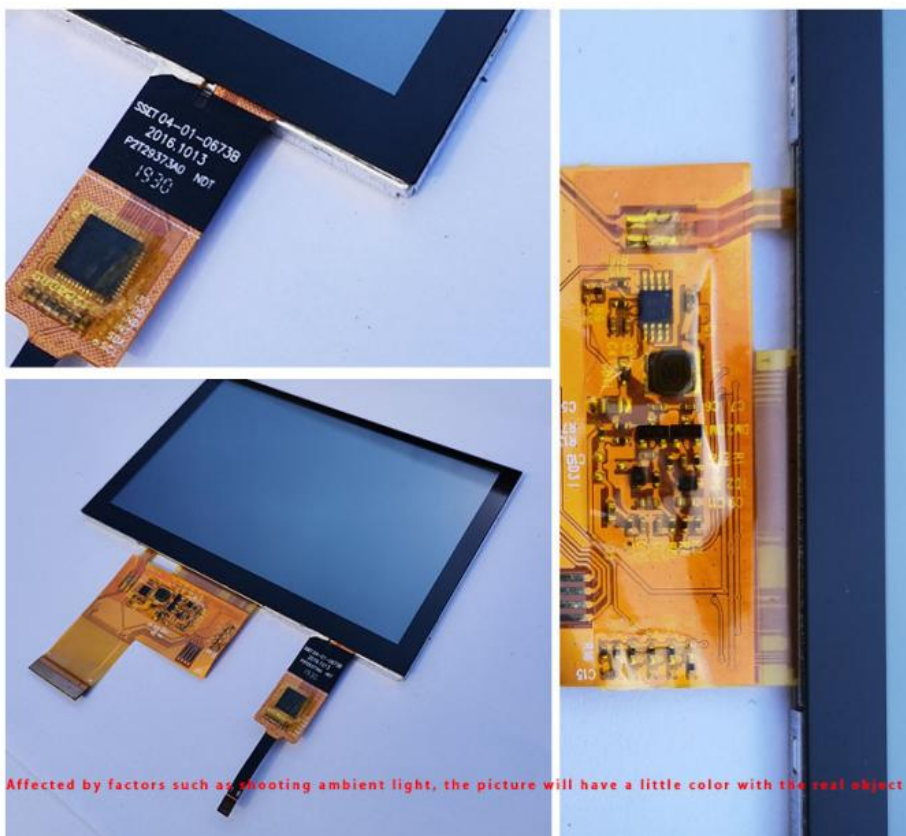
ITEM	STANDARD VALUES	UNITS
LCD type	5.0" TFT+CTP	--
Dot arrangement	800(RGB)× 480	dots
Module size	120.7*75.8*4.65	mm
Active area	120.7*75.8*4.65	mm
Operating temperature	- 20 ~ + 70	°C
Storage temperature	- 30 ~ + 80	°C

2. Description

Chenghao Optoelectronic CH500WV03A-CTB is a 5.0 inch color display installed on the live broadcast equipment, which supports multi-touch, and users can easily interact with the display by pressing the touch panel on the display. This color display has completed the high and low temperature experimental test, and can work normally in an environment with a temperature difference of -20~+70 °C (wide temperature display).

CH500WV03A—CTB is a very cost-effective touch display, using the combination of tft lcd panel + TP. Among them, the lcd panel is of TN type, and the user must read the content on the screen clearly with a viewing angle of 12 O'clock. The TP is capacitive (CTP) and uses the I2C interface. There is a 5.0 inch color display area of this touch display with a resolution of 800xRGBx480, which can display 16M colors. Support 24 bit RGB interface.

Real shooting effect

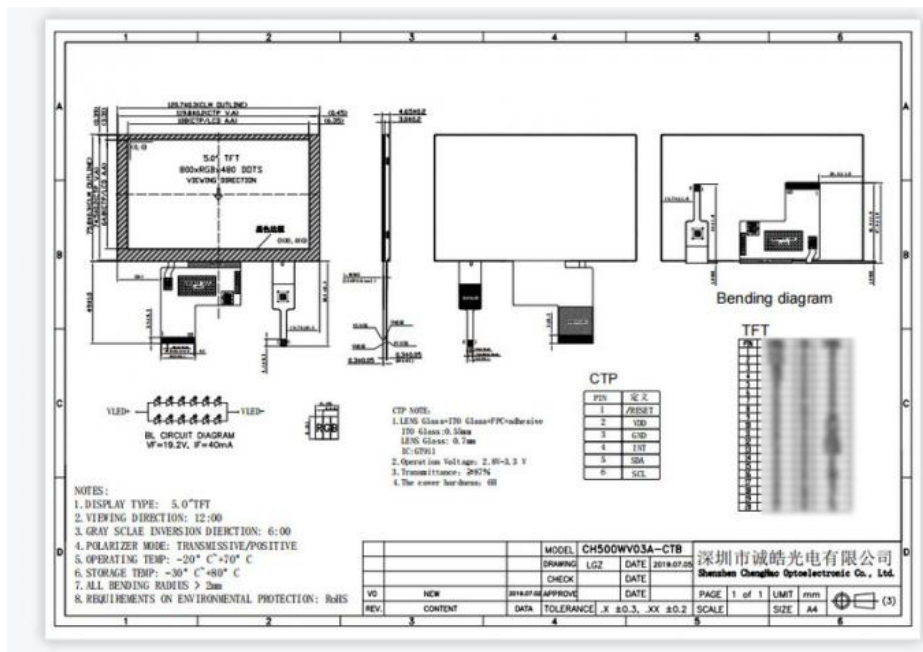


Affected by factors such as shooting ambient light, the picture will have a little color with the real object

3. Drawings

Notes:

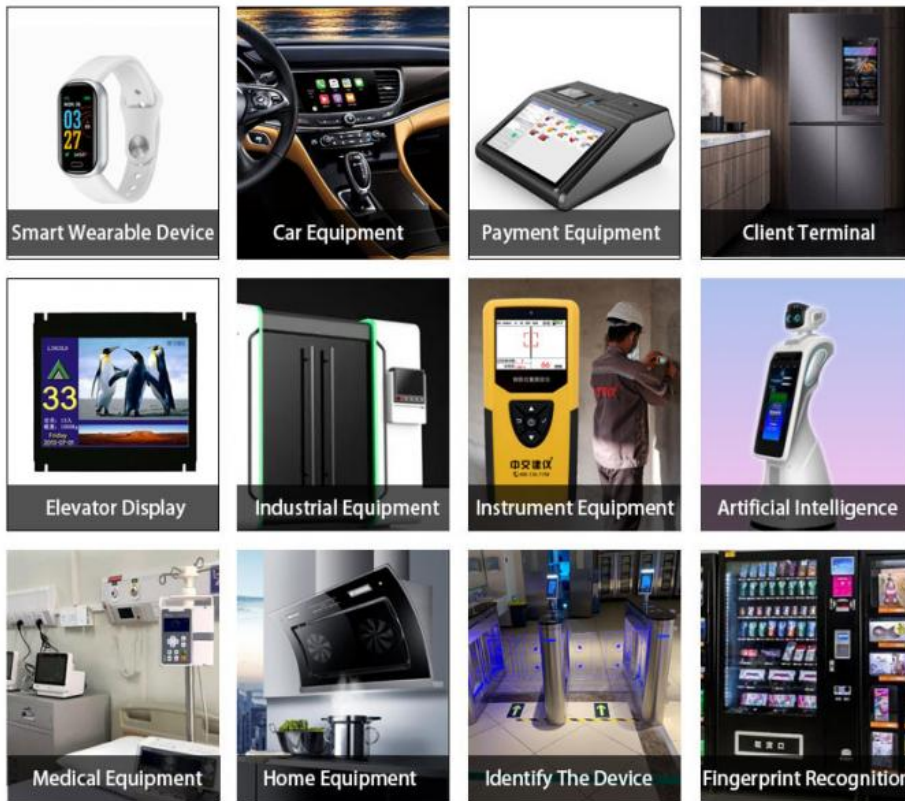
- (1) Display Type : 5.0 inch TFT+CTP
- (2) Viewing Direction : 12:00
- (3) Operating Temp : -20~70 °C
- (4) Storage Temp : -30~80 °C
- (5) Unmarker Tolerance: ±0.20
- (6) Protection : ROHS



4. Qucik Detail

LCM number : CH500WV03A-CTB
 Resolution : 800x480 dots
 Outline dimension : 120.7*75.8*4.65 mm
 Active Area : 108*64.8 mm
 View angle| : 12:00
 Pixel Arrangement : RGB-stripe
 Surface Treatment : Plant
 TFT Electrical Interface : RGB
 Brightness : 300(cd/m2)
 Tft driver IC : ****
 Contrast ratio : 800
 Backlight Type : LED
 Response time : ***** (ms)
 Display mode : TN, Normally While, Transmissive
 Operate temperature : -20-70(°C)
 Storage temperature : -30-80(°C)
 Display Colors : 16.7M
 Backlight lifetime : 20k hrs (Min.)
 With/without Touch Panel: With
 Touch Panel Type: capacitive

5. Application



6. FAQ

Q1: Are you manufacturer ?

A: Yes, we are manufacturer.

Q2: How long is your delivery time?

A: Normally 3-5 working days after payment; Special requirement orders, delivery time is negotiable.

Q3: If the products can't work after receiving it, what should I do?

A: We will replace new items for you at once and then we make the judgement for the issue.

Q4: Do you accept OEM design?

A: Yes, we do. We can design according to your requirement, MOQ usually 100-1000.

Q5: Do you accept pay 30% in advance?

A: Yes, we do. We can start to prepare your goods when receive 30% payment, and send them after get the rest 70% payment.

Q6: What payment terms you accept?

A: We accept Paypal, T/T, Western Union, Wechat, Alipay, in Cash (RMB or USD).



Shenzhen ChengHao Optoelectronic Co., Ltd.



+86 755-27806536



add@chenghaolcm.com



chenghaolcd.com

7th floor, building C5, Hengfeng Industrial City, Hangcheng street, Bao'an District, Shenzhen