



## LCD Manufacture 4 Inch Color TFT Lcd Module 480x480 Pixels Square Touch Screen

Our Product Introduction

for more products please visit us on [chenghaolcd.com](http://chenghaolcd.com)

### Basic Information

- Place of Origin: ShenZhen, China
- Brand Name: Chenghao/Oem
- Certification: ROHS ISO9001 CE
- Model Number: CH400WV17A-CTW
- Minimum Order Quantity: 100 pcs
- Price: /
- Packaging Details: All the products are packed in right way to keep it safe. For small sizes of products we use tray + carton, For bigger sizes we use foam slot + carton. we also design packages according to customers' requirements
- Delivery Time: 7-15 working days
- Payment Terms: T/T
- Supply Ability: 300Kpcs/month

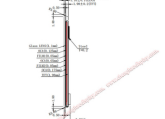
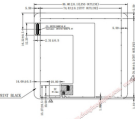
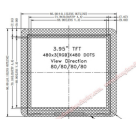
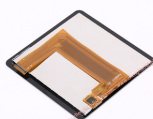


### Product Specification

- Product Name: Square Color LCD Display
- LCD Type: 4"TFT+CTP
- Resolution: 480x480
- Display Mode: IPS
- Viewing Direction: All
- TFT Driver IC: ST7701S
- CTP Type: G+F+F
- Surface Treatment: 6H
- Luminance: 1000 Cd/m<sup>2</sup>
- Driver IC: ST7701S
- Highlight: 3.95 inch Square Color LCD Display, 480x480 Square Color LCD Display, SPI RGB LCD Touch Screen



### More Images



### Product Description

LCD Manufacture 4 Inch Color TFT Lcd Module 480x480 Pixels Square Touch Screen

**Module Size: Optional 0.91~10.1 inch**

**Optional TP Type: Capacitive TP & Resistive TP & No TP**

**Optional BL : 200~2000 cd/m<sup>2</sup>**

**Optional TFT Interface : RGB & LVDS & MIPI & MCU & SPI & HDMI**



Our Product Introduction

### 1. Specification of TFT Module

Module No	CH400WV17A-CTW	--
Size	3.95	Inch
Outline Dimension	86(W)*86(H)*3.55(T)	mm
Active Area	71.856(W)*70.176(H)	mm
Interface	3 Line SPI+24 Bit RGB	--
Viewing Direction	80/80/80/80	--
Operating Temperature	-20 ~ +70	°C
Storage Temperature	-30 ~ +80	°C

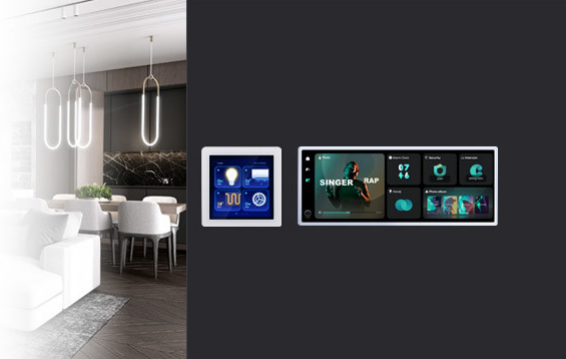
### 2. Description of TFT Display Module

CHenghao Optoelectronic  
CH400WV17A-CTW is a square color TFT LCD display Module used in the medical field. It adopts IPS display technology, allowing users to read the screen with a free viewing angle, which is especially important when the display is used outdoors.

This square color LCD screen has been tested in anti-static (EMC>=8Kv), high and low temperature (-20~+70 °C), anti-aging (20K Hr), anti-electromagnetic interference (EMI) and other experimental tests, with excellent performance Well received by customers.

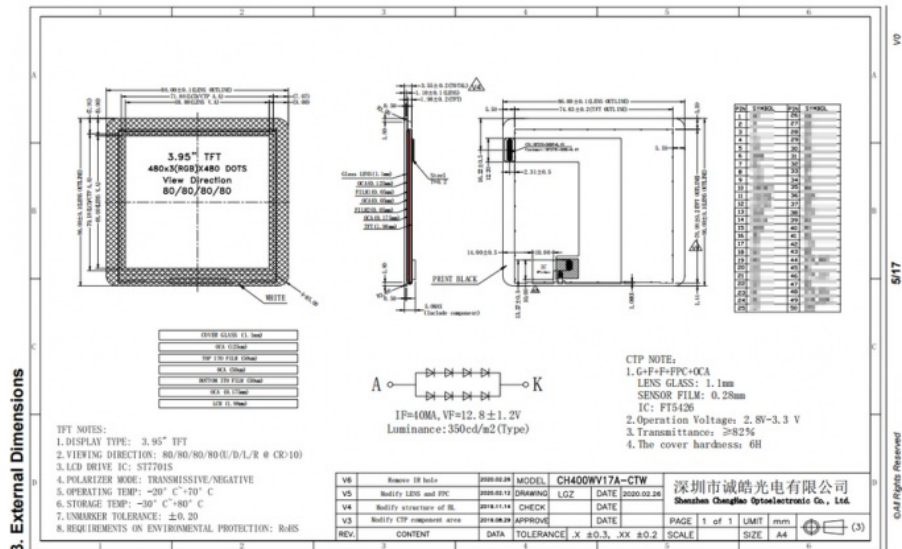
There is a 3.97 inch color display area of this square color LCD display, which can display 480\*480 pixel video animations, and supports multi-touch function, users can easily achieve and display with the display by touching the capacitive panel of interaction. Support 3 line SPI+24 bit RGB multi-interface to communicate with the outside world.

If this square color LCD touch screen does not meet your project needs, we have many similar display solutions available to you, or we can also customize display solutions according to your requirements, you can email or online customer service Contact us for more information.



### 3. Quick Detail of TFT Lcd Display Module

LCD type: 3.95" TFT  
Dot arrangement: 480(RGB)\*480 dots  
Color filter array: RGB vertical stripe  
Display mode: IPS / Transmissive / Normally Black  
Viewing Direction: 80/80/80/80  
TFT Driver IC: ST7701S  
CTP type: G+F+F  
Surface Treatment: 6H  
CTP Driver IC: FT5426  
Module size: 86.0(W)\*86.0(H)\*3.55(T) mm  
TFT/CTP Active area: 71.856(W)\*70.176(H) mm  
LENS Viewing area: 68(W)\*68(H) mm  
Dot pitch: 0.1497(W)\*0.1462(H) mm  
Interface: 3line SPI + 24bit RGB  
Operating temperature: -20 ~ +70 °C  
Storage temperature: -30 ~ +80 °C  
Back Light: 8pcs White LED  
Weight: TBD g



### 4. Our Products

Size	Part No.	Shape	Resolution	Size	Part No.	Shape	Resolution
1.1"	CH110T001A	Square screen	96(RGB)*96	4.3"	CH430WQ18A	horizontal screen	480*3(RGB)*272
1.14"	CH114QV01A	vertical screen	135(RGB)*240	4.3"	CH430WV15A	vertical screen	480*(RGB)*800
1.3"	CH130QV03A	Square screen	240*(RGB)*240	4.41"	CH441FH01A	horizontal screen	1920*(RGB)*1080
1.44"	CH144QV16A	Square screen	128*(RGB)*128	4.5"	CH450FW02A	vertical screen	480*(RGB)*854
1.47"	CH147QV01A	vertical screen	172*(RGB)*320	5.0"	CH500WQ03A	horizontal screen	480*(RGB)*272
1.5"	CH150DS01A	horizontal screen	480*240	5.0"	CH500WV05B	horizontal screen	800*(RGB)*480
1.54"	CH154QV05A	Square screen	240*(RGB)*240	5.0"	CH500FW09A	vertical screen	480*(RGB)*854

1.8"	CH180QQ09B	vertical screen	128*(RGB)*160	5.5"	CH550FH01A	vertical screen	1080*(RGB)*1920
1.9"	CH190QV01A	vertical screen	170*(RGB)*320	7.0"	CH700WV03A	horizontal screen	800*(RGB)*480
2.0"	CH200QV11A	vertical screen	320*3(RGB)*240	7.0"	CH700WS16A	horizontal screen	1024*3(RGB)*600
2.1"	CH210WV01A	Round Screen	480*(RGB)*480	7.0"	CH700WX06A	vertical screen	800*(RGB)*1280
2.2"	CH220QV06A	vertical screen	240(RGB)*320	7.0"	CH700FH01B	vertical screen	800*(RGB)*1280
2.31"	CH231QV07A	horizontal screen	320*(RGB)*240	8.0"	CH800WX02A	vertical screen	800*(RGB)*1280
2.4"	CH240QV58A	vertical screen	240*(RGB)*320	8.0"	CH800FH03A	vertical screen	1200*(RGB)*1920
2.8"	CH280QV36A	vertical screen	240*3(RGB)*320	9.0"	CH900WV01A	horizontal screen	800*(RGB)*480
3.5"	CH350HV40A	vertical screen	320*(RGB)*480	9.0"	CH900WS01A	horizontal screen	1024*(RGB)*600
4.0"	CH400WV22A	vertical screen	480*800	10.1"	CH101WS01A	horizontal screen	1024*(RGB)*600
				10.1"	CH101WX02A	horizontal screen	1280*(RGB)*800

## C ustomization

### FPC Design

The **shape** and **structure** of FPC can be designed according to customer project requirements.

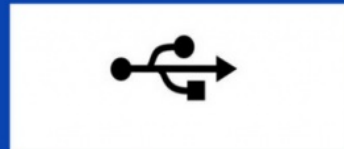


01

### Custom Interface

Optional interface type:

**RGB & MCU & SPI & MIPI & LVDS & HDMI ...**



02

### Backlight (BL) Design

Back-light Brightness: 300~3000 cd/m2 Luminance

The brightness of the screen can be customized and adjusted according to the needs of the project, and the supported brightness value range is 300~3000 cd/m2.



03

### Touch Panel Design

- Optional Capacitive Touch Panel(**CTP**) & Resistive Touch Panel(**RTP**)
- Touch glass cover can be designed according to customer project requirements



Show case

04

### 6. Our Service

1. We provide one-year product after-sales guarantee service to all customers who purchase our products.
2. For any technical problems encountered by customers in the process of testing or using our products, our technical team will provide customers with remote online technical support services at any time.
3. We are a factory-type supplier with ISO certification. Our products on sale have undergone strict quality inspection and testing before shipment, and have also passed CE/ROHS certification.
4. We have a professional after-sales service team, which can provide strong guarantee and logistical technical services for your orders.
5. Replacement within 30 days after the shipment of products from us due to products' problems.
6. We have long cooperation with many shipping companies and our export volume is large. The shipping companies can offer us good discounts.
7. All goods will be inspected and tested before shipment.



Shenzhen ChengHao Optoelectronic Co., Ltd.

+86 755-27806536

add@chenghaolcm.com

chenghaolcd.com

7th floor, building C5, Hengfeng Industrial City, Hangcheng street, Bao'an District, Shenzhen