



240x320 Touch LCD Screen 2.8 Inch 50pin With Resistive Touch Panel

Our Product Introduction

Basic Information

- Place of Origin: ShenZhen, China
- Brand Name: Chenghao/Oem
- Certification: ROHS ISO9001 CE
- Model Number: CH280QV07A-T
- Minimum Order Quantity: 100 pcs
- Price: /
- Packaging Details: All the products are packed in right way to keep it safe. For small sizes of products we use tray + carton, For bigger sizes we use foam slot + carton. we also design packages according to customers' requirements
- Delivery Time: 7-15 working days
- Payment Terms: T/T
- Supply Ability: 300Kpcs/month



Wholesale Custom Small Size 2.8 inch TFT LCD Display Module

Product Specification

- Product Name: Touch LCD Screen
- Resolution: 240x320 Dots
- Display Mode: TN
- Viewing Direction: 6:00
- Interface: SPI/RGB/MCU
- Back Light Number: 4 Pcs
- LCD Type: 2.8inch Tft
- Driver IC: ILI9341
- Highlight: **240x320 Touch LCD Screen, Touch LCD Screen 2.8 inch, SPI Resistive touch LCD panel**



Wholesale Custom Small Size 2.8 inch TFT LCD Display Module

Product Description

240x320 Touch LCD Screen 2.8 Inch 50pin With Resistive Touch Panel

1. Specification

Display type	2.8" TFT LCD+RTP
Backlight tube	LED
Brightness (cd/m ²)	300
Backlight life (h)	>20,000
Contrast	500
Viewing angle (L/R/T/B)	6:00

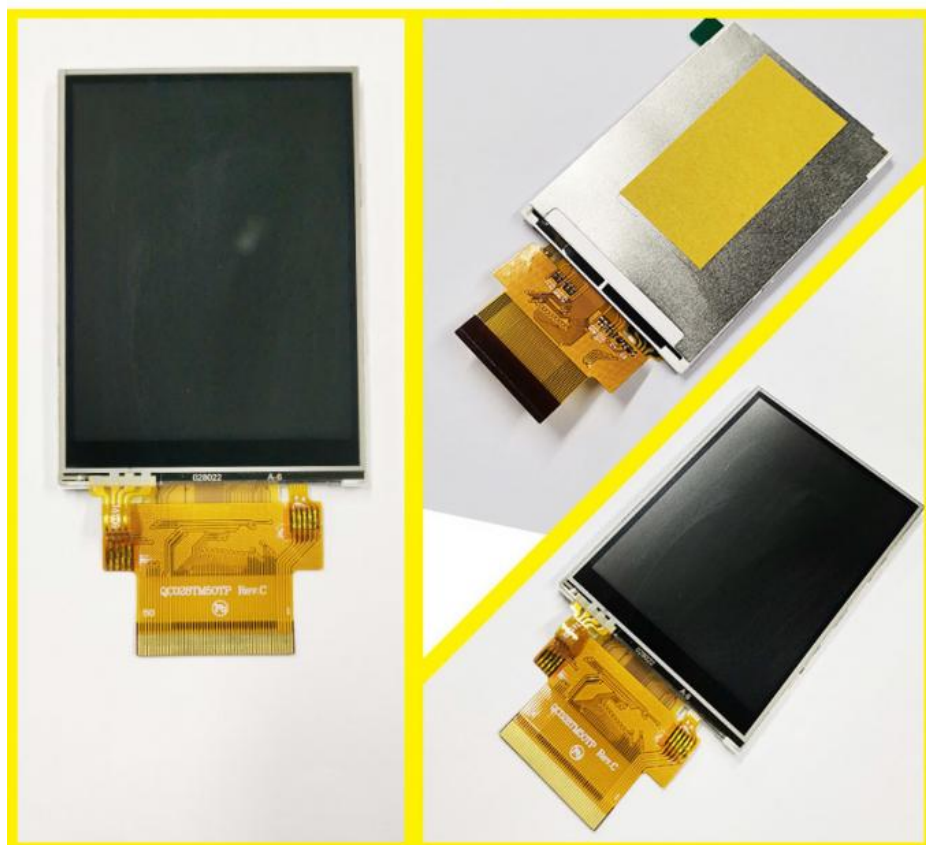
2. Description

CHenghao Optoelectronic CH280QV07A-T is a touch LCD screen that supports human-computer interaction. Users can easily interact with the device through the touch panel. The touch LCD screen has undergone strict high and low temperature experimental tests, and can work in an environment with a temperature between -20~ +70°C. It is a real wide temperature display and has been widely used.

This touch LCD screen belongs to tft lcd, with a lifespan of up to 20K Hr, and supports SPI, MCU, and RGB interfaces. There is a 2.8 inch color display area of the touch LCD screen, which can display video animations of 240x320 pixels.

If this touch LCD screen does not meet your project needs, we can provide you with more similar LCD display solutions, or modify and customize the display solution according to your needs, the customizable content includes the brightness of the backlight, FPC shape design, communication interface customization, removal of touch panel, etc.

Real Shot Effect

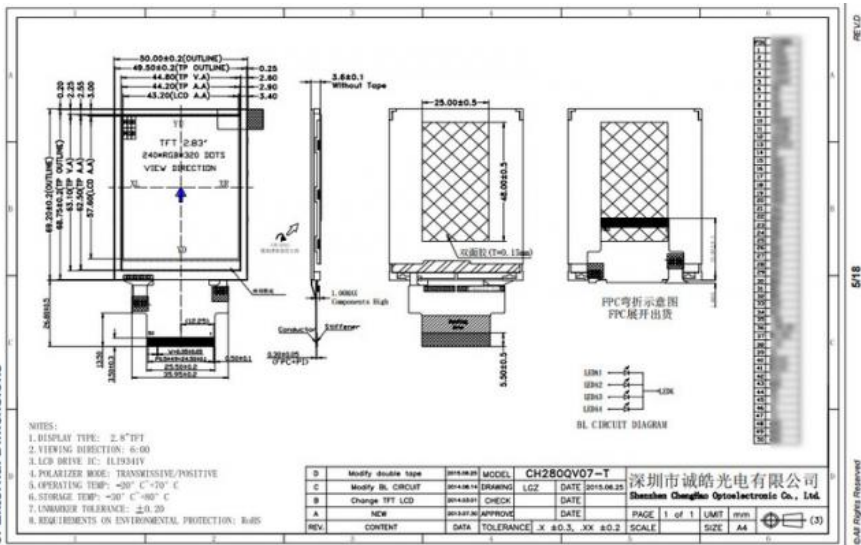


3. Drawings

Notes:

- (1) Display Type : 2.8"TFT+RTP
- (2) Viewing Direction : 6:00
- (3) Lcd Drive IC : ILI9341
- (4) Operating Temp : -20~70 °C
- (5) Storage Temp : -30~80 °C
- (6) Unmarker Tolerance: ±0.20
- (7) Protection : ROHS

3. External Dimensions



4. Quick Detail

LCD type: 2.8" TFT
 Dot arrangement: 240(RGB)×320 dots
 Color filter array: RGB vertical stripe
 Display mode: TN / Transmission / Normally White
 Lcd manufacturer: Chenghao Optoelectronic
 Viewing Direction: 6 o'clock
 Driver IC: ILI9341V
 Module size: 50.0(W)×69.2(H)×3.6(T) mm
 Active area: 43.2(W)×57.6(H) mm
 Dot pitch: 0.18(W)×0.18(H) mm
 Interface:
 4-lines_8bit / 3-lines_9bit SPI
 8-/9-/16-/18-bit 8080-series system interface
 SPI + 6-/16-/18-bit RGB interface
 Operating temperature: -20 ~ +70 °C
 Storage temperature: -30 ~ +80 °C
 Back Light: 4 White LED In Parallel
 Weight: TBD g

5. Application



Smart Wearable Device



Car Equipment



Payment Equipment



Client Terminal



Elevator Display



Industrial Equipment



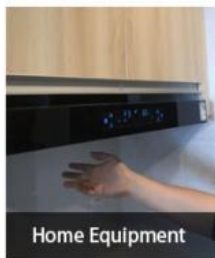
Instrument Equipment



Artificial Intelligence



Medical Equipment



Home Equipment



Identify The Device



Fingerprint Recognition

6. FAQ

Q:Payment methods?

T/T, Paypal and Western union etc.

For samples: payment in advance.

For mass production: 50% deposit and 50% balance before shipment.

Q: What is the lead time of the products?

A:Samples in stock will be sent within 3 days after payment.

Two to Four weeks for mass production

Q:How long is the warranty period?

A:Generally the warranty period is one year. It depends on different products.

Q:What is the Product MOQ?

A:Different product has the different MOQ, please contact us sales for detailed information.

Q: What's your after-sale service?

A: If any problems, you will get our reply within 24 hours. Solution will be offered instantly by our professional technical team.



Shenzhen ChengHao Optoelectronic Co., Ltd.



+86 755-27806536



add@chenghaolcm.com



chenghaolcd.com

7th floor, building C5, Hengfeng Industrial City, Hangcheng street, Bao'an District, Shenzhen