



## Round Color LCD Display 2.1 Inch 480x480 IPS All Viewing Direction

### Our Product Introduction

#### Basic Information

- Place of Origin: ShenZhen, China
- Brand Name: Chenghao/Oem
- Certification: ROHS ISO9001 CE
- Model Number: CH210WV01A-CT
- Minimum Order Quantity: 100 pcs
- Price: /
- Packaging Details: All the products are packed in right way to keep it safe. For small sizes of products we use tray + carton, For bigger sizes we use foam slot + carton. we also design packages according to customers' requirements
- Delivery Time: 7-15 working days
- Payment Terms: T/T
- Supply Ability: 300Kpcs/month



#### Product Specification

- Product Name: Round Color LCD Display
- Resolution: 480x480
- Display Mode: IPS
- Viewing Direction: All
- TFT Driver IC: ST7701S
- CTP Driver IC: CST830
- Module Size:  $\phi 71.8 \times 3.65(T)$  Mm
- Active Area:  $\phi 53.28$  Mm
- Dot Pitch:  $0.111(W) \times 0.111(H)$  Mm
- Highlight: CTP Round Color LCD Display, 2.1 Inch Round LCD Display, ST7701S Round LCD Display



## Product Description

### Round Color LCD Display 2.1 Inch 480x480 IPS All Viewing Direction

#### 1. Specification

Display type	TFT LCD+CTP
Backlight tube	LED
Brightness (cd/m <sup>2</sup> )	300
Backlight life (h)	>20,000
Contrast	800
Viewing angle ( L/R/T/B)	80/80/80/80

#### 2. Description

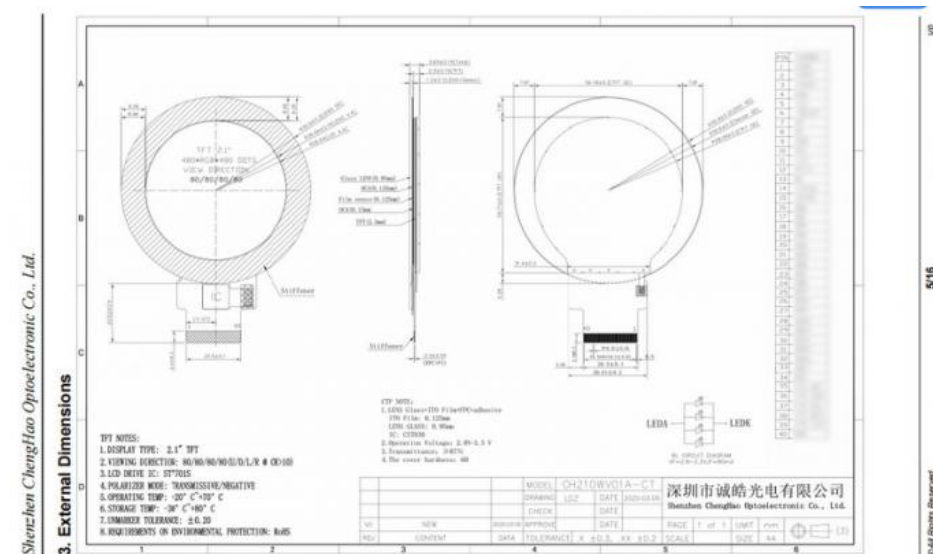
CHenghao Optoelectronic CH210WV01A-CT is a round color LCD display with IPS display technology that allows users to read the screen with an ultra-wide viewing angle (80/80/80/80), which is especially important for outdoor use of the product. At the same time, the round color LCD display is also a wide temperature display that has been tested by high and low temperature experiments and practical applications, and can work in an environment with a temperature between -20~+70 °C. There is a 2.1 inch color display area of round color lcd display, which can play video animations of 480\*480 pixels, and supports 3 line SPI+18 bit RGB multi-interface.

If this round color LCD display can't meet your needs, we have many similar LCD display solutions for you to choose from, you can get it by email or contact our online customer service.

#### 3. Drawings

Notes:

- (1) Display Type : 2.1 inch TFT+CTP
- (2) Viewing Direction : all viewing direction
- (3) Operating Temp : -20~70 °C
- (4) Storage Temp : -30~80 °C
- (5) Unmarker Tolerance: ±0.20
- (6) Protection : ROHS



#### 4. Quick Detail

LCD type: 2.1" TFT + CTP  
 Lcd manufacturer: Chenghao Optoelectronic  
 Dot arrangement: 480(RGB)×480 dots  
 Color filter array: RGB vertical stripe  
 Display mode: IPS / Transmissive / Normally Black  
 Viewing Direction: 80/80/80/80  
 TFT Driver IC: ST7701S  
 CTP Driver IC: CST830  
 Module size: φ71.8×3.65(T) mm  
 Active area: φ53.28 mm  
 Dot pitch: 0.111(W)×0.111(H) mm  
 TFT Interface: 3line SPI + 18bit RGB  
 CTP Interface: I2C  
 Operating temperature: -20 ~ +70 °C  
 Storage temperature: -30 ~ +80 °C  
 Back Light: 4pcs White LED

Weight :TBD g

## 5. Application



## 6. FAQ

Q1: What is your sample policy?

A: If there is stock, you can sample at any time, if there is no stock, it will take some time, and then wait for the materials to come back to sample. But the customer needs to pay the sample fee and express fee.

Q2: How long is your lead time for mass production?

A: It takes about 20 - 45 working days for mass production, depending on the model and order quantity.

Q3: How to ensure long-term stable delivery?

A: First, we will recommend products that can be delivered for a long time to customers, and second, we will have a large number of stocks in advance for a long time.

Q4: What is your mode of payment for mass production?

A: Generally, after receiving 50%-100% deposit from customers, they begin to prepare materials. Delivery is about 5 working days after receipt of the final payment.

Q5: Will you inspect the goods before delivery?

A: Yes, we'll ship the goods after 100% inspection.

Q6: How long is your warranty period?

A: We guarantee the quality for one year.



**Shenzhen ChengHao Optoelectronic Co., Ltd.**



+86 755-27806536



add@chenghaolcm.com



chenghaolcd.com

7th floor, building C5, Hengfeng Industrial City, Hangcheng street, Bao'an District, Shenzhen