



10.1 Inch Full Viewing Angle Color Touch LCD Display 1024x600 Resolution

Our Product Introduction

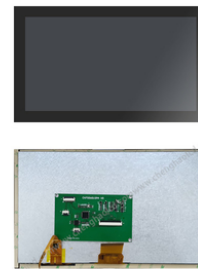
Basic Information

- Place of Origin: ShenZhen, China
- Brand Name: Chenghao/Oem
- Certification: ROHS ISO9001 CE
- Model Number: CH101WS07A-CT-PA
- Minimum Order Quantity: 100 pcs
- Price: /
- Packaging Details: All the products are packed in right way to keep it safe. For small sizes of products we use tray + carton, For bigger sizes we use foam slot + carton. we also design packages according to customers' requirements
- Delivery Time: 7-15 working days
- Payment Terms: T/T
- Supply Ability: 300Kpcs/month



Product Specification

- Product Name: 10.1 Color Touch LCD Display
- Dot Arrangement: 1024*600
- Display Mode: IPS
- Viewing Direction: All Viewing Direction
- CTP Driver IC: GT911
- TFT Interface: SPI
- CTP Interface: I2c
- Back Light Number: 42
- Highlight: IPS 10.1 Inch LCD Display,
SPI 10.1 Inch LCD Display,
1024x600 IPS LCD Display



Product Description

10.1 Inch Full Viewing Angle Color Touch LCD Display 1024x600 Resolution

1. Specification

Type:	TFT
Viewing Direction:	80/80/80,80
Display Mode	IPS
Operating temperature:	30°C~80°C
Storage temperature:	30°C~80°C
Driver IC:	****
Interface type:	SPI
Brightness:	400 CD/

2. Description

CHenghao Optoelectronic CH101WS07A-CT is a full viewing angle color touch LCD display, which mainly includes a touch panel (TP), a Lcd panel, a backlight assembly (BL), a driver IC and an FPC.

(1) This TP is a capacitive touch panel (CTP), using GT911 as a driver IC, communicating with other components through the I2C interface, and supporting multi-touch.

(2) The Lcd panel is of TFT type, allowing users to read the LCD screen with a wide viewing angle (80/80/80/80). There is a 10.1 inch active color area of the Lcd panel that can play 1024x600 pixel HD video animations.

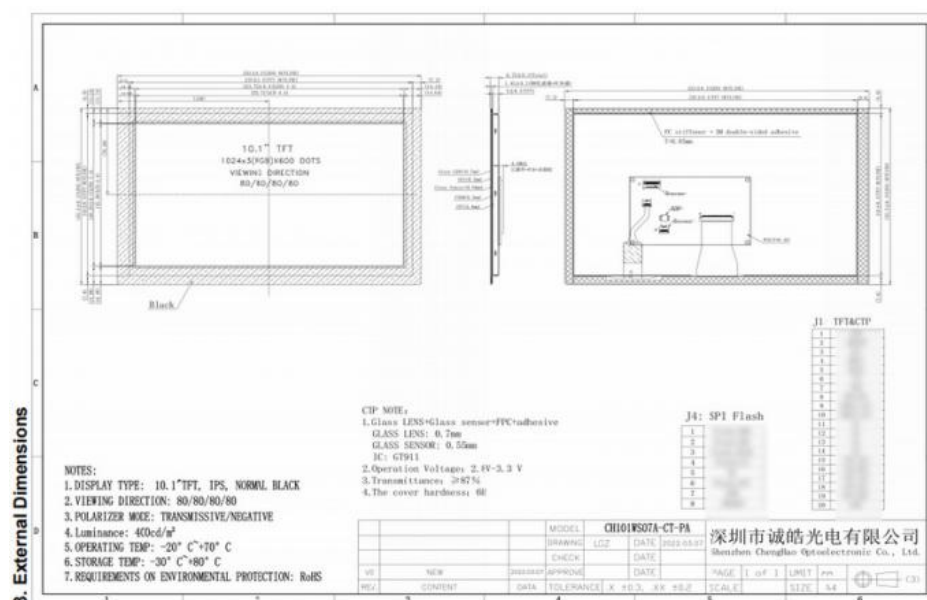
(3) BL and FPC can be customized according to customer requirements. The customized content includes BL brightness, FPC shape, interface customization, touch panel removal or replacement (RTP), etc.

If CH101WS07A-CT can not meet your needs, we have many similar LCD display solutions for you to choose from, you can get them through our online customer service.

3. Drawings

Notes:

- (1) Display Type : 10.1" TFT+CTP
- (2) Viewing Direction : 80/80/80/80
- (3) Operating Temp : -20~70 °C
- (4) Storage Temp : -30~80 °C
- (5) Unmarker Tolerance: ±0.20
- (6) Protection : ROHS



4. Quick Detail

LCD type: 10.1" TFT + CTP

Warranty: one year

Dot arrangement: 1024(RGB)×600 dots

Color filter array: RGB vertical stripe

Display mode: IPS / Transmissive / Normally Black

Viewing Direction: 80/80/80/80

CTP type: G+G

Surface Treatment: 6H

CTP Driver IC: GT911

Lcd supplier: Chenghao Optoelectronic

Module size: 252.00(W)×155.50(H)×10.75(T) mm
 TFT size: 235.00(W)×143.00(H)×5.0(T) mm
 Active area: 222.72(W)×125.28(H) mm
 LENS Viewing area: 223.72(W)×126.28(H) mm
 dot pitch: 0.2175(W)×0.2088(H) mm
 Interface TFT:SPI
 CTP:I2C
 Operating temperature: -20 ~ +70 °C
 Storage temperature: -30 ~ +80 °C
 Back Light: 42 White LED
 Weight: TBD g

5. Application



6. FAQ

Q1: Do you accept customization displays and touch screens?

A: Sure, you can customization the FPC, Backlight and the touch screen.

Q2: What type of interface is your display screen?

A: Small sized of displays generally support SPI, MCU, RGB, MIPI. Medium sized displays generally support LVDS, MIPI, EDP. Different specifications use different interfaces.

Q3: Do you used capacitive touch screen or resistive touch screen.

A: We have capacitive touch screen and resistive touch screen .

Q4: What is your sample policy?

A: If there is stock, you can sample at any time, if there is no stock, it will take some time, and then wait for the materials to come back to sample. But the customer needs to pay the sample fee and express fee.

Q5: How long is your lead time for mass production?

A: It takes about 20 - 45 working days for mass production, depending on the model and order quantity.



Shenzhen ChengHao Optoelectronic Co., Ltd.



+86 755-27806536



add@chenghaolcm.com



chenghaolcd.com

7th floor, building C5, Hengfeng Industrial City, Hangcheng street, Bao'an District, Shenzhen