



480x800 Dots TFT LCD Capacitive Touchscreen 4.3" 25Pin MIPI Interface 350 Cd/M2

Our Product Introduction

Basic Information

- Place of Origin: ShenZhen, China
- Brand Name: Chenghao/Oem
- Certification: ROHS ISO9001 CE
- Model Number: CH430WV12A-CTA
- Minimum Order Quantity: 100 pcs
- Price: Negotiation
- Packaging Details: All the products are packed in right way to keep it safe. For small sizes of products we use tray + carton, For bigger sizes we use foam slot + carton. we also design packages according to customers' requirements
- Delivery Time: 7-15 working days
- Payment Terms: T/T
- Supply Ability: 300Kpcs/month



Product Specification

- Product Name: 480x800 TFT LCD Capacitive Touchscreen
- Resolution: 800*480 Dots
- Overall Size: 62.5(W)*109.55(H)*4.0(T)mm
- Active Area: 56.16(W)*93.6(H)mm
- TFT Interface: MIPI
- CTP Interface: I2C
- Brightness: 350 Cd/m2
- Highlight: 480x800 Dots TFT LCD Capacitive Touchscreen, MIPI TFT LCD Capacitive Touchscreen, 350 Cd/M2 TFT LCD screen



Product Description

480x800 TFT LCD Capacitive Touchscreen 4.3" 25Pin MIPI interface

1. Specification

item	value
Type	TFT LCD
Display Size	4.3 inch
Supplier Type	Original manufacturer
Place of Origin	China
Model Number	CH430WV12A-CTA
Brand Name	CHENGHAO OPTOELECTRONIC
Outline Dimension	62.5(W)*109.55(H)*4.0(T)mm
Display area	56.16(W)*93.6(H)mm
Operating Temperature	-20~70°C
Storage Temperature	-30~80°C
color	16.2M

2. Description

Chenghao 4.3 inch tft lcd module (CH430WV12A-CTA) is a color active matrix TFT (thin film transistor) Lcd (liquid crystal display) that uses amorphous silicon TFT as a switching device. It mainly includes a touch panel, an lcd panel, a driver IC, a backlight and an FPC.

This touch panel is a capacitive touch panel (CTP), uses the I2C interface, and supports multi-touch.

The lcd panel is an IPS TFT type with a 4.3 inch color display area (vertical screen), which can display 480*800 dots resolution video images and supports 80/80/80/80 full viewing angles.

ILI9806E is used as driver IC for 4.3 inch tft lcd module, supports MIPI interface and can display 16M colors.

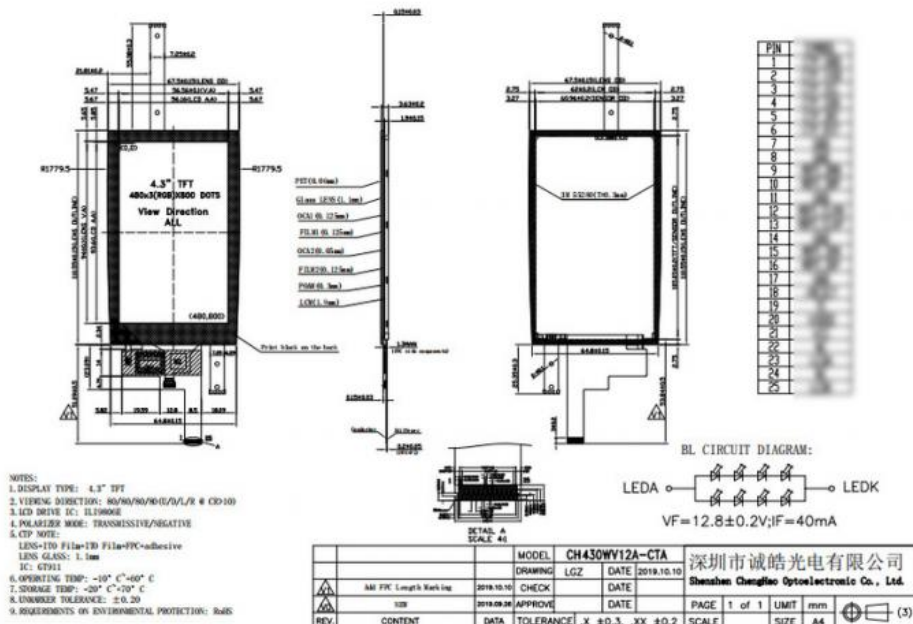
For most customer LCD screen buyers, personalized customization is inevitable. CH430WV12A-CTA can be modified and customized according to customer requirements. The customized content includes removal or replacement of touch function (RTP), Sunlight Readable (modified brightness), screen waterproof and anti-glare (screen surface treatment), FPC design (shape structure, interface definition), etc.

If you want to get more relevant information, you are welcome to contact our customer service at any time.

3. Drawings

Notes:

- (1) Display Type : TFT+CTP
- (2) Viewing Direction : 80/80/80/80
- (3) Lcd Drive IC : ILI9806E
- (4) Polarizer Mode : Transmissive/ Negative
- (5) Operating Temp : -20~70 °C
- (6) Storage Temp : -30~80 °C
- (7) Unmarker Tolerance: ± 0.20
- (8) Protection : ROHS



4. Quick Detail

- * LCM name: 480x800 TFT LCD Capacitive Touchscreen
- * Model: CH430WV12A-CTA
- * Lcm Size.: 4.3 inch
- * Display Type: 4.3" TFT+CTP
- * Display colors: 16.7M
- * Viewing Angle: All Viewing Angle
- * Driver IC: ILI9806
- * Display mode: IPS/transmissive/ Normally black
- * Module size: 62.5(W)*109.55(H)*4.0(T)mm
- * TFT Active Area: 56.16(W)*93.6(H)mm
- * Luminance: 350 cd/m2
- * Contrast: 800
- * TFT Interface Type: MIPI
- * Pin Number: 25pin
- * Backlight type : White LED
- Backlight: 8 LED

5. Application



6. FAQ

Q:Payment methods?

T/T, Paypal and Western union etc.

For samples: payment in advance.

For mass production: 50% deposit and 50% balance before shipment.

Q: What is the lead time of the products?

A:Samples in stock will be sent within 3 days after payment.

Two to Four weeks for mass production

Q:How long is the warranty period?

A:Generally the warranty period is one year. It depends on different products.

Q:What is the Product MOQ?

A:Different product has the different MOQ, please contact us sales for detailed information.

Q: What's your after-sale service?

A: If any problems, you will get our reply within 24 hours. Solution will be offered instantly by our professional technical team.

Q:Can you provide OEM service?

A:yes, we can provide both OEM and ODM service,can customize products according to the drawings you supply



Shenzhen ChengHao Optoelectronic Co., Ltd.



+86 755-27806536



add@chenghaolcm.com



chenghaolcd.com

7th floor, building C5, Hengfeng Industrial City, Hangcheng street, Bao'an District, Shenzhen