



WVGA Small LCD Touch Screen 4.3inch All Viewing Angle IPS TFT Display

Our Product Introduction

Basic Information

- Place of Origin: ShenZhen, China
- Brand Name: Chenghao/Oem
- Certification: ROHS ISO9001 CE
- Model Number: CH430WV12A-CTA
- Minimum Order Quantity: 100 pcs
- Price: Negotiation
- Packaging Details: All the products are packed in right way to keep it safe. For small sizes of products we use tray + carton, For bigger sizes we use foam slot + carton. we also design packages according to customers' requirements
- Delivery Time: 7-15 working days
- Payment Terms: T/T
- Supply Ability: 300Kpcs/month



Product Specification

- Product Name: WVGA Small LCD Touch Screen
- Dot Arrangement: 800x480
- Outline Dimension: 62.5(W)*109.55(H)*4.0(T)mm
- Display Area: 56.16(W)*93.6(H)mm
- Interface: TFT: MIPI CTP:I2C
- Luminance: 350cd/m2
- Life Time: 20K Hr
- Highlight: WVGA Small LCD Touch Screen,
MIPI Small LCD Touch Screen,
350 cd/m2 IPS TFT display



Product Description

WVGA Small LCD Touch Screen 4.3inch IPS All Viewing Angle TFT

1. Specification

Lcd Type:	4.3 inch TFT+CTP
Viewing Direction:	80/80/80/80
Operating temperature:	30°C~80°C
Storage temperature:	30°C~80°C
Driver IC:	ILI9806
Interface type:	MIPI
Brightness:	350 CD/

2. Description

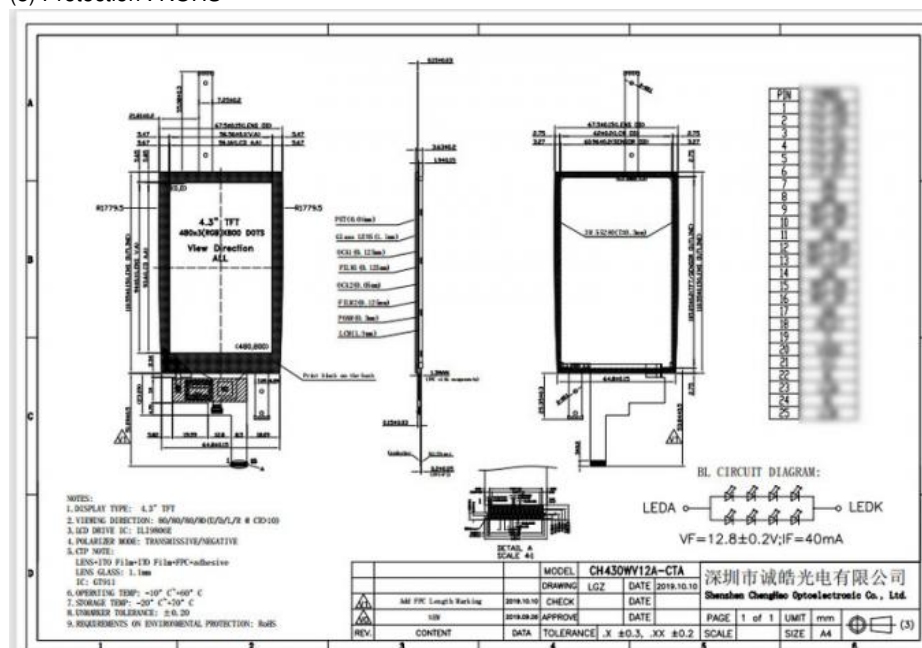
Chenghao 4.3 inch tft lcd (CH430WV12A-CTA) is a color active matrix thin film transistor (TFT) liquid crystal display (LCD) that uses amorphous silicon TFT as a switching device. This 4.3" tft lcd uses MIPI interface with capacitive touch panel and supports multi-touch. Thanks to the IPS display technology, the 4.3" tft lcd allows users to read the screen with a viewing angle close to 80/80/80/80 maximum.

If CH430WV12A-CTA cannot fully meet your requirements, we can modify some functional parameters (customization) of the display solution for you. The modifiable contents include FPC shape connection structure, interface definition, touch function removal or replacement (RTP), Brightness modification (Sunlight Readable), etc. You can obtain relevant customized information by consulting our online customer service.

3. Drawings

Notes:

- (1) Display Type : 4.3" TFT
- (2) Viewing Direction : 80/80/80/80
- (3) Lcd Drive IC : ILI9806
- (4) Polarizer Mode : Transmissive/ Negative
- (5) Operating Temp : -20~70 °C
- (6) Storage Temp : -30~80 °C
- (7) Unmarker Tolerance: ± 0.20
- (8) Protection : ROHS

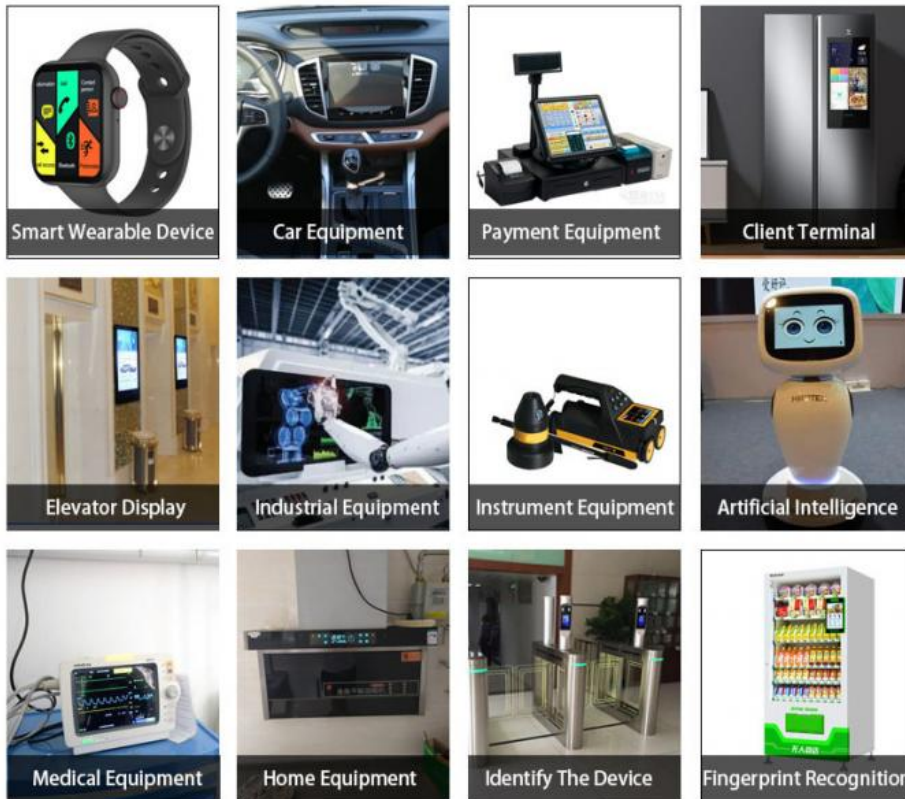


4. Quick Detail

- * LCM name: WVGA Small LCD Touch Screen
- * Model: CH430WV12A-CTA
- * Lcm Size.: 4.3 inch
- * Display Type: 4.3" TFT+CTP
- * Display colors: 16M
- * Number of Dots: 480*3(RGB)*800
- * Viewing Angle: 80/80/80/80
- * Driver IC: ILI9806
- * Display mode: IPS/Transmissive/ Normally Black
- * Module size: 62.5(W)*109.55(H)*4.0(T) mm
- * TFT Active Area: 56.16(W)*93.6(H) mm

- * Luminance: 350 cd/m2
- * Contrast: 800
- * TFT Interface Type: MIPI
- * Pin Number: 25
- * Backlight type : White LED
- Backlight: 8 LED

5. Application



6. FAQ

Q:Payment methods?

T/T, Paypal and Western union etc.

For samples: payment in advance.

For mass production: 50% deposit and 50% balance before shipment.

Q: What is the lead time of the products?

A:Samples in stock will be sent within 3 days after payment.

Two to Four weeks for mass production

Q:How long is the warranty period?

A:Generally the warranty period is one year. It depends on different products.

Q:What is the Product MOQ?

A:Different product has the different MOQ, please contact us sales for detailed information.

Q: What's your after-sale service?

A: If any problems, you will get our reply within 24 hours. Solution will be offered instantly by our professional technical team.

Q: How can I trust your product quality?

A:The company has advanced the incoming inspection, on-line test and reliability test equipment and system, the company products through the ROHS,CE testing



Shenzhen ChengHao Optoelectronic Co., Ltd.



+86 755-27806536



add@chenghaolcm.com



chenghaolcd.com

7th floor, building C5, Hengfeng Industrial City, Hangcheng street, Bao'an District, Shenzhen