



All Viewing Direction IPS LCD Display 4 lines 8bit SPI Interface 1.54" Small LCD Screen

Our Product Introduction

Basic Information

- Place of Origin: ShenZhen, China
- Brand Name: Chenghao/Oem
- Certification: ROHS ISO9001 CE
- Model Number: CH154HV05A-CT
- Minimum Order Quantity: 100 pcs
- Price: Negotiation
- Packaging Details: All the products are packed in right way to keep it safe. For small sizes of products we use tray + carton, For bigger sizes we use foam slot + carton. we also design packages according to customers' requirements
- Delivery Time: 7-15 working days
- Payment Terms: T/T
- Supply Ability: 300Kpcs/month



Product Specification

- Product Name: IPS LCD Display
- CTP Type: Glass +ITO Film+FPC+Adhesive
- CTP Driver IC: FT6236
- Module Size: 40.2(W)×40.5(H)×4.1(T) Mm
- Active Area: 27.744(W)×27.744(H) Mm
- Dot Pitch: 0.0867(W)×0.0867(H) Mm
- Interface: 4-lines_8bit SPI
- Highlight: **8bit SPI IPS LCD Display ,
SPI Interface Small LCD Screen,
1.54" Small LCD Screen**



Product Description

All Viewing Direction IPS LCD Display 1.54" Very Small Lcd Screen

1. Specification

ITEM	STANDARD VALUES	UNITS
LCD type	1.54" TFT	--
Dot arrangement	320(RGB)×320	dots
Driver IC	ST7796	--
Module size	40.2(W)×40.5(H)×4.1(T)	mm
Active area	27.744(W)×27.744(H)	mm
Dot pitch	0.0867(W)×0.0867(H)	mm
Operating temperature	-20 ~ +70	°C
Storage temperature	-30 ~ +80	°C
Back Light	3 White LED In Paralle	--
Weight	TBD	g

2. Description

Chenghao mini touch screen (CH154HV0A-CT) is a small size capacitive touch screen, using 4-lines_8bit SPI interface, which can display 65K/262K colors. There is a 1.54 inch color display area of this mini touch screen, which can display 320(RGB)×320 resolution video pictures.

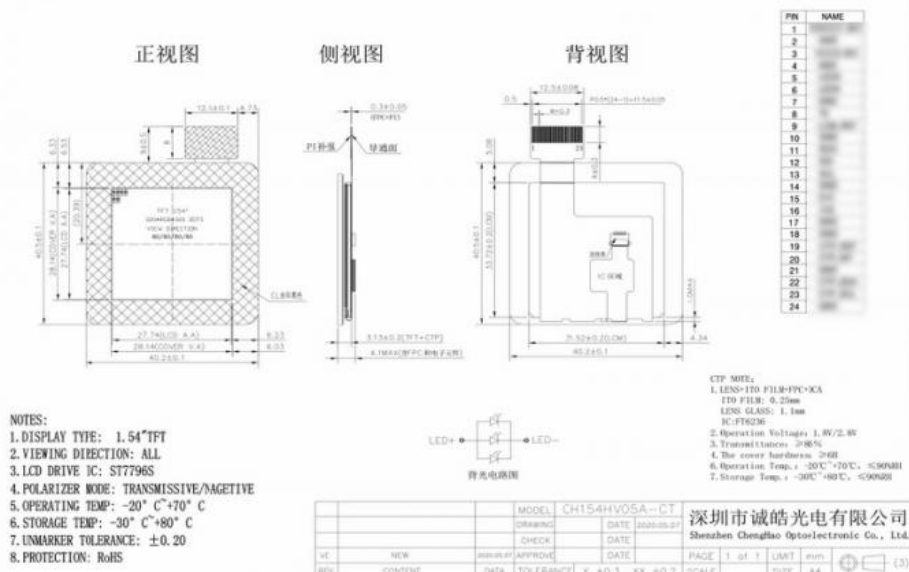
Because this mini touch screen uses IPS liquid crystal display technology, it has a full viewing angle of 80/80/80/80, which means that this display allows users to view the screen with extreme viewing angles close to 80/80/80/80. At the same time, the CH154HV05A-CT is also a wide temperature display screen, which can work in an environment where the temperature is in the range of -20~+70 °C.

If you need to customize the 1.54 inch color LCD screen, we can also do it. You can get more information by consulting online customer service.

3. Drawings

Notes:

- (1) Display Type : 1.54 inch TFT+CTP
- (2) Viewing Direction : All Viewing Angle
- (3) Lcd Drive IC : ST7796
- (4) Polarizer Mode : Transmissive/ Negative
- (5) Operating Temp : -20~70 °C
- (6) Storage Temp : -30~80 °C
- (7) Unmarker Tolerance: ±0.20
- (8) Protection : ROHS

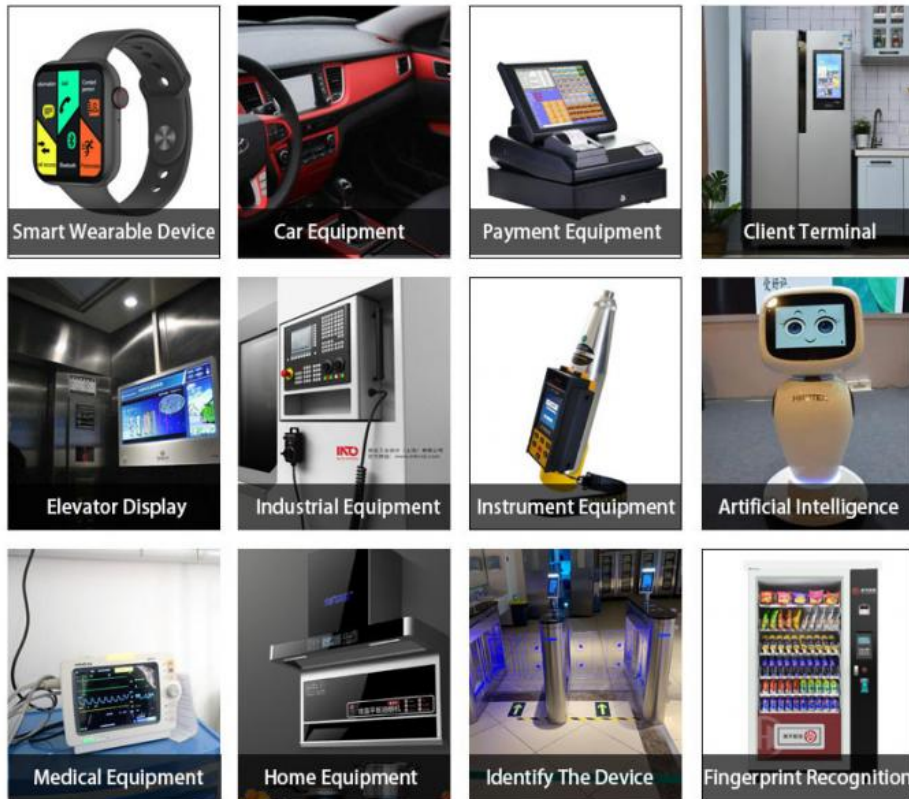


4. Quick Detail

- * LCM name: All Viewing Direction IPS LCD Display
- * Model: CH154HV05A-CT
- * Lcm Size.: 1.54 inch
- * With touch panel or not: with
- * Touch type: CTP
- * Display Type: 1.54" TFT+CTP

- * Display colors: 262K/65K
- * Number of Dots: 320*320 dots
- * TFT Dot Pitch : 0.0867(W)×0.0867(H) mm
- * Viewing Angle: 80/80/80/80
- * Driver IC: ST7796
- * Display mode: IPS/ Transmission/ Normally Black
- * Module size: 40.2(W)×40.5(H)×4.1(T) mm
- * TFT Active Area: 27.744(W)×27.744(H) mm
- * Luminance: 400 cd/m2
- * Contrast: 800
- * TFT Interface Type: 4-lines_8bit SPI
- * CTP Interface Type: I2C
- * Pin Number: 24 pins
- * Backlight type and color: LED backlight/white
- Backlight: 3 LED parallel

5. Application



7. FAQ

- (1) Fully / Semi-automated production line ensure the best quality.
- (2) Custom Design,can specially meet your needs.
- (3) Fast Delivery ,about 20 days for lead time
- (4) Samples available on request; Small MOQ orders can be negotiated.
- (5) Provide best pre-sale and after-sale service to you.

If you have more question , Please contact us now, we look forward to communicating with you !



Shenzhen ChengHao Optoelectronic Co., Ltd.



+86 755-27806536



add@chenghaolcm.com



chenghaolcd.com

7th floor, building C5, Hengfeng Industrial City, Hangcheng street, Bao'an District, Shenzhen