



5inch Medical LCD Display Module 800x480 Resolution Horizontal Screen

Our Product Introduction

Basic Information

- Place of Origin: ShenZhen, China
- Brand Name: Chenghao/Oem
- Certification: ROHS ISO9001 CE
- Model Number: CH500WV03A-T
- Minimum Order Quantity: 100 pcs
- Price: Negotiation
- Packaging Details: All the products are packed in right way to keep it safe. For small sizes of products we use tray + carton, For bigger sizes we use foam slot + carton. we also design packages according to customers' requirements
- Delivery Time: 7-15 working days
- Payment Terms: T/T
- Supply Ability: 300Kpcs/month



Product Specification

- Product Name: 5inch Medical Lcd Display
- Module Size: 120.7(W)×75.8(H)×4.2(T) Mm
- TFT Active Area: 108(W)×64.8(H) Mm
- TFT Dot Pitch: 0.135(W)×0.135(H)
- Interface: 24-bit Parallel RGB Interface
- Backlight Type: White LED
- Luminance: 250 Nits
- Highlight: **5inch Medical LCD Display ,
24bit Parallel RGB Medical LCD Display ,
TN Transmissive LCD Display Module**



Product Description

5inch Medical Lcd Display 800x480 Resolution Horizontal Screen

1. Specification

MODEL NO.	CH500WV03A-T
Module type	5.0" TFT
Display Mode	TN / Transmissive
Resolution	800*480 dots
Viewing Direction	12 O'clock
Module size	120.7(W)×75.8(H)×4.2(T) mm
TFT Active area	108(W)×64.8(H) mm
TFT Dot pitch	0.135(W)×0.135(H) mm
Interface	RGB
Luminance	250 Nits

2. Description

ChengHao Display model CH500WV03A-T is a 5.0 inch lcd touch screen with RGB interface and working life up to 20K Hr. This lcd touch screen consists of a touch panel, a liquid crystal panel, a backlight and FPC components.

This touch panel belongs to Resistive touch panel (RTP), which communicates and interconnects with other components through the USB interface.

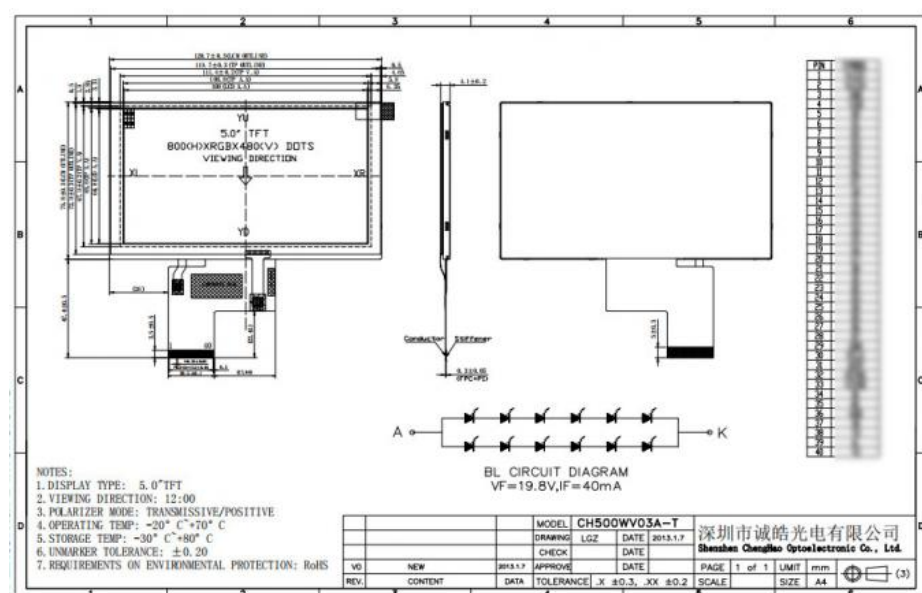
The lcd panel is of color tft type (horizontal screen) and can display 800×3(RGB)×480 dots resolution video images.

The backlight and FPC components can be customized according to customer requirements. The customized content includes the brightness of the backlight, the shape and structure of the FPC, and the definition of the interface.

3. Drawings

Notes:

- (1) Display Type : 5.0" TFT
- (2) Viewing Direction : 12:00
- (3) Lcd Drive IC : ###
- (4) Polarizer Mode : Transmissive/ Positive
- (5) Operating Temp : -20~70 °C
- (6) Storage Temp : -30~80 °C
- (7) Unmarker Tolerance: ±0.20
- (8) Protection : ROHS



4. Quick Detail

- * LCM name: 5inch Medical Lcd Display
- * Model: CH500WV03A-T
- * Lcm Size.: 5.0 inch
- * Display Type: 5"TFT
- * Display colors: 16.7M
- * Number of Dots: 800*480
- * Viewing Angle: 12:00
- * Driver IC: ###
- * Display mode: TN/Transmissive/ Normally White
- * Module size: 120.7(W)×75.8(H)×4.2(T) mm
- * TFT Active Area: 108(W)×64.8(H) mm

- * Dot pitch: 0.135(W)×0.135(H) mm
- * Luminance: 250 cd/m²
- * Contrast: 500
- * TFT Interface Type: RGB
- * Pin Number: 40 pin
- * Backlight type : White LED
- Backlight: 12 LED

5. Application



6. FAQ

1. Who are we?

We are based in Guangdong China, start from 2015, sell to

WesternEurope (35.00%)

Oceania (25. 00%)

North America (13.00%)

SouthAmerica (7.00%)

Southeast Asia (7. 00%)

Northern Europe (7.00%)

Southern Europe (4.00%)

Domestic Market (2. 00%).

There are total about 30 people in our office.

2 How can we guarantee quality?

Always a pre-production sample before mass production;

Always final Inspection before shipment.

3.What can you buy from us?

Color TFT LCD,Touch Panel Modules,Pcap & Cover Glass,Monochrome LCD, Converter Board.

4. Why should you buy from us not from other suppliers?

CHENGHAO LCD is a national high-tech enterprise which established in year 2016. We are committed to research and development, manufacturing and sales of LCD screens, touch screens and comprehensive display solutions.



Shenzhen ChengHao Optoelectronic Co., Ltd.



+86 755-27806536



add@chenghaolcm.com



chenghaolcd.com

7th floor, building C5, Hengfeng Industrial City, Hangcheng street, Bao'an District, Shenzhen