



Waterproof 7.0 Inch IPS Panel Display 1024x600 Resolution All Viewing Direction

Our Product Introduction

Basic Information

- Place of Origin: ShenZhen, China
- Brand Name: Chenghao/Oem
- Certification: ROHS ISO9001 CE
- Model Number: CH700WS12A
- Minimum Order Quantity: 100 pcs
- Price: /
- Packaging Details: All the products are packed in right way to keep it safe. For small sizes of products we use tray + carton, For bigger sizes we use foam slot + carton. we also design packages according to customers' requirements
- Delivery Time: 7-15 working days
- Payment Terms: T/T
- Supply Ability: 300Kpcs/month



Product Specification

- Product Name: Waterproof 7.0 Inch Ips Panel Display
- Module Type: 7"TFT
- Display Mode: IPS / Transmissive / Normally Black
- Number Of Dots: 1024*3(RGB)*600
- Viewing Direction: 80/80/80/80
- Module Size: 164.9(W)*100.0(H)*3.5(T)mm
- TFT Active Area: 154.2144(W)*85.92(H)mm
- Highlight: **Waterproof Ips Panel Display, 400cd/m2 Ips Panel Display, RGB IPS LCD Display**



for more products please visit us on chenghaolcd.com

Product Description

Waterproof 7.0 Inch Ips Panel Display 1024x600 Resolution All Viewing Direction

1. Specification

MODEL NO.	CH700WS12A
Module type	7" TFT
Display Mode	IPS / Transmissive / Normally Black
Number of Dots	1024*3(RGB)*600
Viewing Direction	80/80/80/80
Module size	164.9(W)*100.0(H)*3.5(T)mm
TFT Active area	154.2144(W)*85.92(H)mm
TFT Dot pitch	0.1506(W)*0.1432(H)mm
Interface	RGB
Backlight Type	White LED
Luminance	400cd/m2

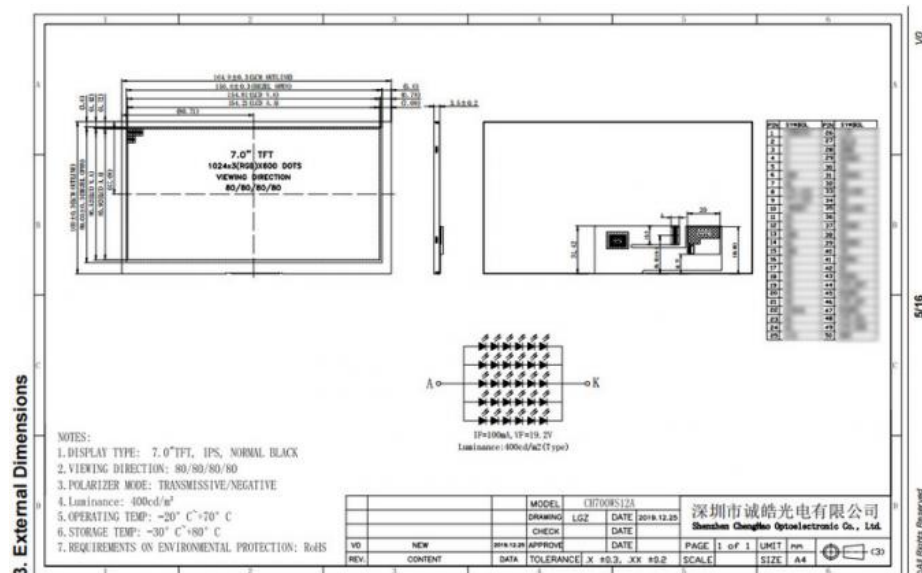
2. Description

ChengHao Display model CH700WS12A is a 7.0 inch HD ips display with 24-bit Parallel RGB Interface. This high-definition IPS display is mainly composed of a tft lcd panel, a driver IC, a backlight and an FPC. There is a 1024x600 Resolution color display area (landscape) of this HD IPS display, which can display 16M colors and allow users to read the screen with ultra-wide viewing angles (80/80/80/80). 24-bit Parallel RGB Interface is supported. This high-definition IPS Display is a customized industrial-grade LCD display, which can be modified and customized for FPC, backlight and other components according to customer requirements.

3. Drawings

Notes:

- (1) Display Type : 7.0" TFT
- (2) Viewing Direction : 80/80/80/80
- (3) Lcd Drive IC : #####
- (4) Polarizer Mode : Transmissive/ Negative
- (5) Operating Temp : -20~70 °C
- (6) Storage Temp : -30~80 °C
- (7) Unmarker Tolerance: ±0.20
- (8) Protection : ROHS

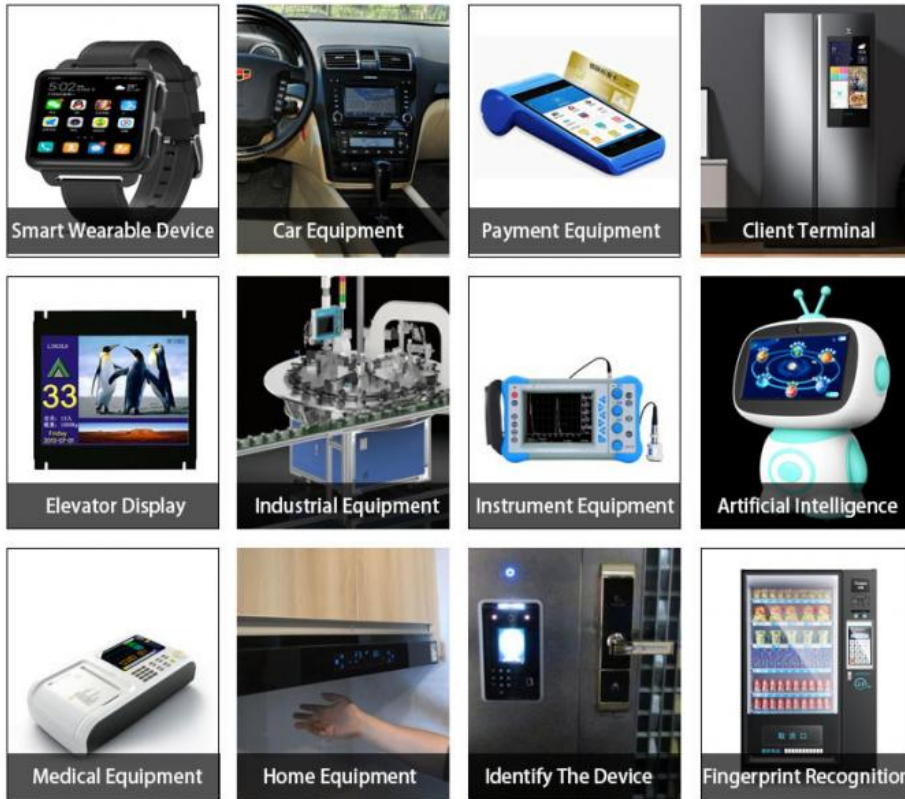


4. Quick Detail

Product Name: 7.0 Inch Ips Panel Display
 Model No: CH700WS12A
 With or Without TP: Without
 LCD type: 7" TFT
 Dot arrangement: 1024x600
 Color filter array: RGB vertical stripe
 Display mode: IPS / Transmissive / Normally Black
 Viewing Direction: 80/80/80/80
 TFT Driver IC: *****
 Color: 16.7M
 Contrast: 800:1
 Module size: 164.9(W)*100.0(H)*3.5(T)mm
 TFT Active area: 154.2144(W)*85.92(H)mm

Dot pitch: 0.1506(W)*0.1432(H)mm
TFT Interface: 24-bit Parallel RGB
FPC Pin Number:50 pin
Operating temperature: -20 ~ +60 °C
Storage temperature: -30 ~ +70 °C
Back Light: 30 White LED
Weight: TBD g

5. Application



6. FAQ

Q1: Are you manufacturer ?

A: Yes, we are manufacturer.

Q2: How long is your delivery time?

A: Normally 3-5 working days after payment; Special requirement orders, delivery time is negotiable.

Q3: If the products can't work after receiving it, what should I do?

A: We will replace new items for you at once and then we make the judgement for the issue.

Q4: Do you accept OEM design?

A: Yes, we do. We can design according to your requirement, MOQ usually 100-1000.

Q5: Do you accept pay 30% in advance?

A: Yes, we do. We can start to prepare your goods when receive 30% payment, and send them after get the rest 70% payment.

Q6: What payment terms you accept?

A: We accept Paypal, T/T, Western Union, Wechat, Alipay, in Cash (RMB or USD).



Shenzhen ChengHao Optoelectronic Co., Ltd.

+86 755-27806536

add@chenghaolcm.com

chenghaolcd.com

7th floor, building C5, Hengfeng Industrial City, Hangcheng street, Bao'an District, Shenzhen