



## Sunlight Color LCD Display Module 7.0 Inch Wide Temp 4lane MIPI Interface

### Basic Information

- Place of Origin: ShenZhen, China
- Brand Name: Chenghao/Oem
- Certification: ROHS ISO9001 CE
- Model Number: CH700WS16A
- Minimum Order Quantity: 100 pcs
- Price: /
- Packaging Details: All the products are packed in right way to keep it safe. For small sizes of products we use tray + carton, For bigger sizes we use foam slot + carton. we also design packages according to customers' requirements
- Delivery Time: 7-15 working days
- Payment Terms: T/T
- Supply Ability: 300Kpcs/month



### Product Specification

- Product Name: Sunlight Color Lcd Display
- TFT Dot Pitch: 0.1506(W)\*0.1432(H)mm
- Interface: 4lane-MIPI
- Backlight Type: White LED
- Luminance: 500 Cd/m2
- Lcd Type: 7.0 Inch Tft
- Display Mode: IPS
- Highlight: 7.0 inch tft LCD Display Module, Sunlight Color LCD Display Module, 4lane MIPI Color Lcd Display



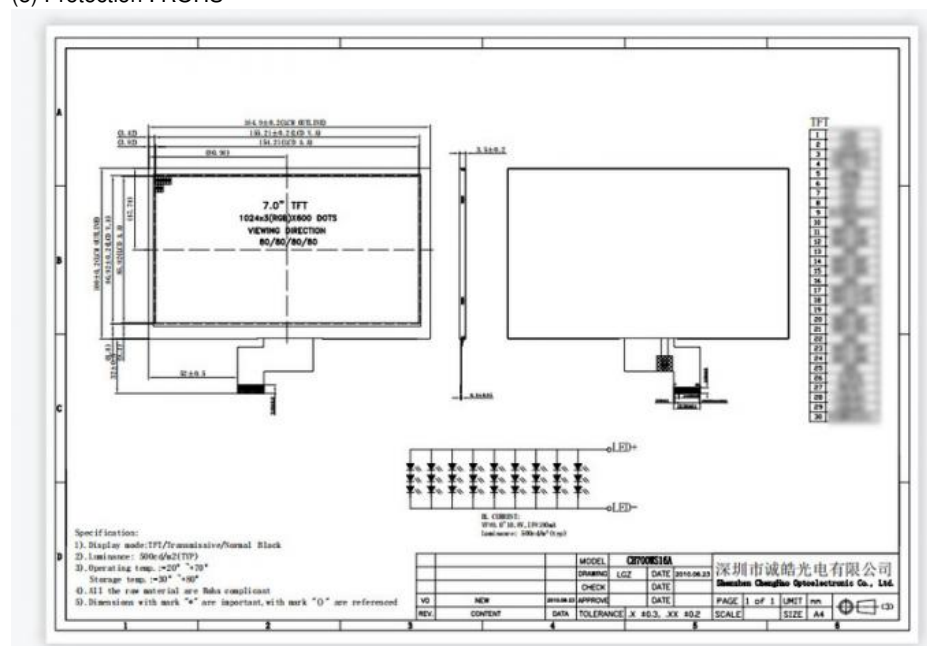
### Sunlight Color Lcd Display Module 7.0 Inch Wide Temp Display

Lcd Type	7" TFT
Display Mode	IPS / Transmissive
Resolution	1024*600
Viewing Direction	80/80/80/80
Outline Dimension	164.9(W)*100.0(H)*3.5(T)mm
Display Area	154.2144(W)*85.92(H)mm
Dot Pitch	0.1506(W)*0.1432(H)mm
Interface	MIPI
Backlight Type	27 pcs White LED
Luminance	500 cd/m2

Chenghao CH700WS16A is a 7.0 inch IPS lcd display with 4 lane-MIPI interface. There is a 7 inch color display area of this ips lcd, which can display 1024\*600 resolution high-definition video images, and the screen color can reach 16M. This ips lcd is also a sunlight-readable tft lcd with a backlight brightness of 500 cd/m2, and the screen can still be clearly read by the user when used in an outdoor environment with strong light. If this high brightness tft lcd can not fully meet your project needs, we can also modify and customize the CH700WS16 display solution according to your needs. The modifiable contents include backlight, FPC structure, interface definition, touch function installation, etc.

Notes:

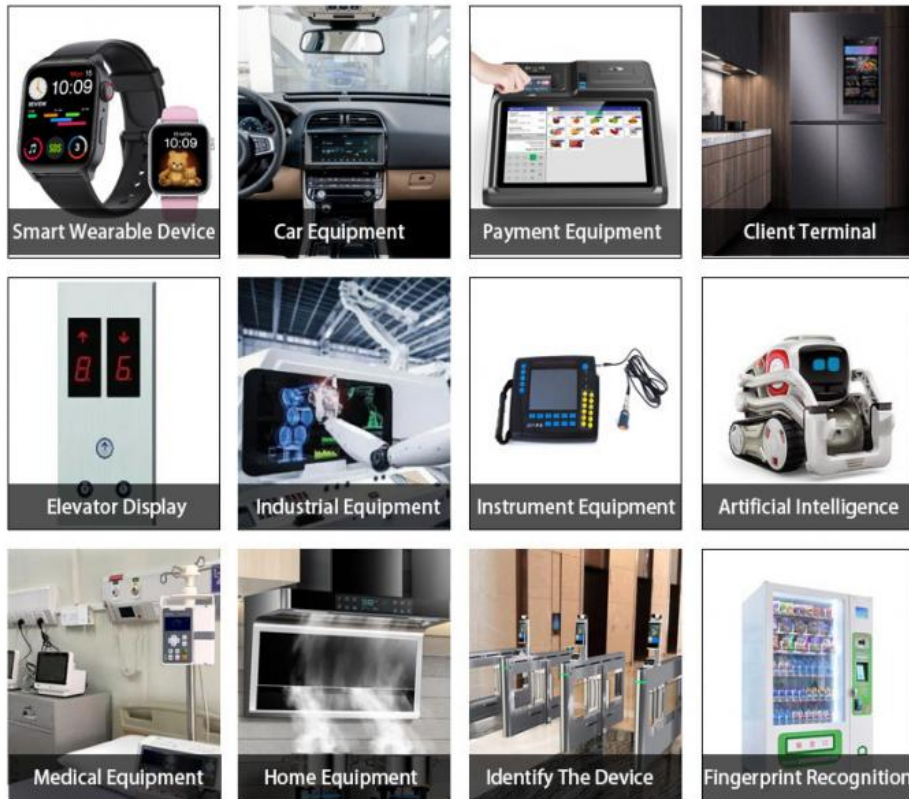
- (1) Display Type : 7inch TFT
- (2) Viewing Direction : all viewing direction
- (4) Polarizer Mode : Transmissive/Normally Black
- (5) Operating Temp : -20~70 °C
- (6) Storage Temp : -30~80 °C
- (7) Unmarker Tolerance:  $\pm 0.20$
- (8) Protection : ROHS



- \* MODEL NO. : CH700WS16A
- \* Module type: 7.0"TFT
- \* Display shape: horizontal screen
- \* Display Mode: IPS / Transmissive / Normally Black
- \* Number of Dots: 1024\*3(RGB)\*400
- \* Module size: 164.9(W)\*100.0(H)\*3.5(T)mm
- \* TFT Active area: 154.2144(W)\*85.92(H)mm
- \* TFT Interface: MIPI
- \* Color : 16.7M
- \* Contrast : 800
- \* VIEWING DIRECTION: 80/80/80/80(U/D/L/R @ CR>10)
- \* LCD DRIVE IC: \*\*\*\*\*
- \* POLARIZER MODE: TRANSMISSIVE/NEGATIVE

- \* OPERATING TEMP: -20°C~+70°C
- \* STORAGE TEMP: -30°C~+80°C
- \* UNMARKER TOLERANCE:  $\pm 0.20$
- \* FPC Number: 30
- \* Back light Type: White LED
- \* Life Time: 20000 Hr
- \* Luminance: 500cd/m<sup>2</sup>

## 5. Application



## 6. FAQ

Q1: Do you testing the products before shipment?

A: we tested every products quality before send out .

Q2: What is your payment methods ?

A: T/T, Paypal, West Union and so on .

Q3: What's the lead time? Sample order is available?

A: lead time : 7-15 working days. We don't have MOQ, Sample order is ok.

Q4: Can you produce according to the samples?

A: Yes, we can produce by your samples or technical drawings design , we can also build the molds.

Q5: What is your terms of packing?

A: Generally, we pack our goods in standard package , also if you have legally registered patent, we can pack the goods in your branded boxes.



**Shenzhen ChengHao Optoelectronic Co., Ltd.**



+86 755-27806536



add@chenghaolcm.com



chenghaolcd.com

7th floor, building C5, Hengfeng Industrial City, Hangcheng street, Bao'an District, Shenzhen