



RGB Interface 4.3 Inch TFT Display 480x272 40 Pin Full Color Display With TP

Our Product Introduction

Basic Information

- Place of Origin: ShenZhen, China
- Brand Name: Chenghao/Oem
- Certification: ROHS ISO9001 CE
- Model Number: CH430WQ08B-T
- Minimum Order Quantity: 100 pcs
- Price: /
- Packaging Details: All the products are packed in right way to keep it safe. For small sizes of products we use tray + carton, For bigger sizes we use foam slot + carton. we also design packages according to customers' requirements
- Delivery Time: 7-15 working days
- Payment Terms: T/T
- Supply Ability: 300Kpcs/month



Product Specification

- Product Name: 4.3 Inch Tft Display
- Module Size: 105.5(W)×67.2(H)×4.1(T) Mm
- Active Area: 95.04(W)×53.856(H) Mm
- Dot Pitch: 0.198 (W)×0.198 (H) Mm
- Interface: 24-bit Parallel RGB Interface
- Operating Temperature: -20 ~ +70 °C
- Storage Temperature: -30~+80 °C
- Back Light: 7 White LED
- Highlight: Full Color 4.3 Inch TFT Display , RGB Interface 4.3 Inch Tft Display, 480x272 Full color display



Product Description

4.3 Inch Tft Display 480x272 40pin Full Color Display With TP

1. Specification

Part No.	CH430WQ08B-T
Size	4.3 inch
Resolution	480x272
Outline Dimension	105.5×67.2×4.1 mm
Active Area	95.04×53.856 mm
Interface	RGB
IC	---
FPC	40
Working temperature	-20°C ~ 70°C
Storage temperature	-20°C ~ 70°C
Delivery Time	10 days

2. Description

Chenghao Optoelectronic CH430WQ08B-T is a 4.3 inch Resistive touch screen module with 24-bit Parallel RGB Interface. This Resistive touch display belongs to Tn TFT, has a 4.3 inch 480x272 resolution color display area, supports 12:00 viewing angle...

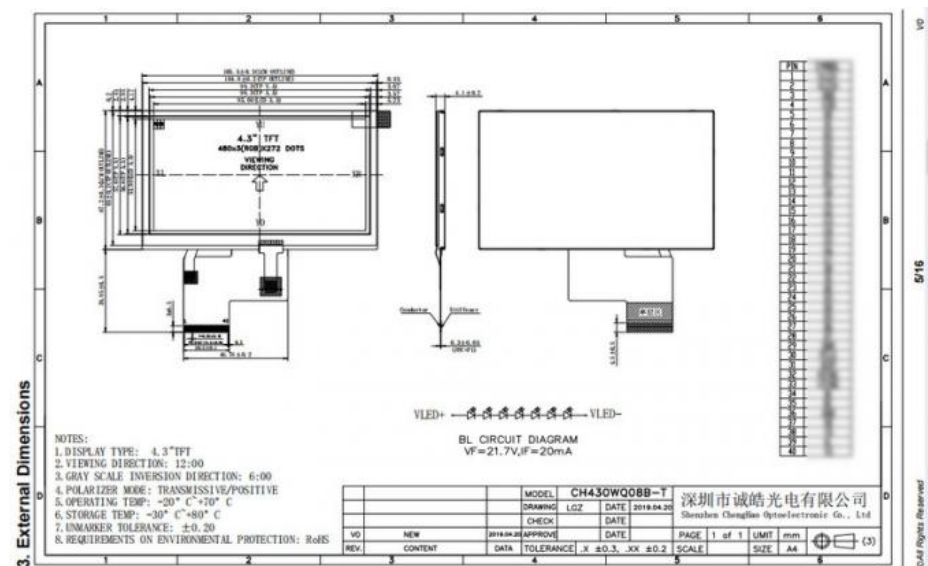
It is worth mentioning that this 4.3 inch touchscreen module can be modified and customized according to customer requirements. The modified content includes touch function removal or replacement (CTP), BL modification, FPC design, interface definition, etc.

Of course, if you want to know more display solutions similar to CH430WQ08B-T, you can consult our customer service for inquiries, we look forward to hearing from you.

3. Drawings

Notes:

- (1) Display Type : 4.3 inch TFT+RTP
- (2) Viewing Direction : 12:00
- (4) Polarizer Mode : Transmissive/Normally white
- (5) Operating Temp : -20~70 °C
- (6) Storage Temp : -30~80 °C
- (7) Unmarker Tolerance: ±0.20
- (8) Protection : ROHS

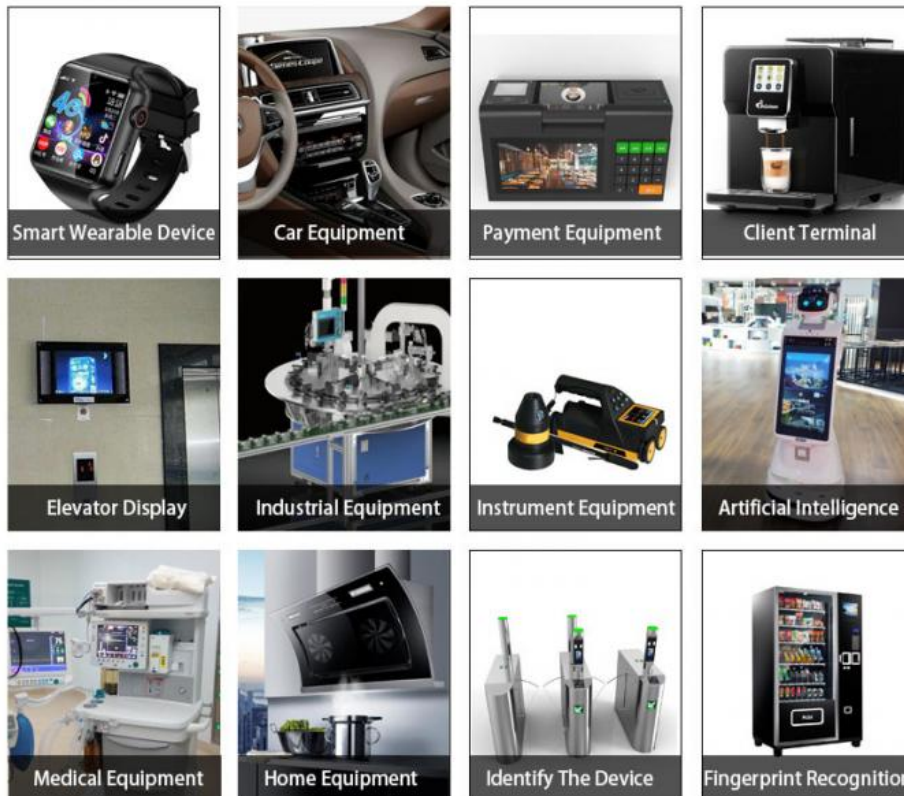


4. Quick Detail

LCM No : CH430WQ08B-T
 Resolution : 480x272 dot
 Dot pitch : 0.198 (W)×0.198 (H) mm
 Outline dimension : 105.5(W)×67.2(H)×4.1(T) mm
 Active Area : 95.04(W)×53.856(H) mm
 View angle: 12 o'clock
 Pixel Arrangement : RGB-stripe
 Surface Treatment : Plant
 TFT Electrical Interface : 24-bit Parallel RGB Interface
 TP Type: Resistive touch panel
 RTP Interface: usb
 Brightness : 250 cd/m2
 Contrast ratio : 500

Backlight Type : white led
 Display mode : Transmission/ Normally white
 Operate temperature : -20~ +70(°C)
 Storage temperature : -30~ +80(°C)
 Display Colors : 16.7M
 Backlight lifetime : 20k hrs(Min.)

5. Application



6. FAQ

A Q: When can i get the quotation?

A: We usually quote within 12 hours after we got your inquiry.

If it is very urgent, please call us or contact us via email, Skype or WhatsApp.

Q: What is your warranty?

A: We provide one year warranty.

Q: May i buy samples from you?

A: Yes! You are welcome to place sample order to test our High quality and service.

Q: How to place bulk order?

A: 1) Tell us model number, quantity, color and other special requirements.

2) Proforma Invoice will be made and sent to you for approval

3) Production will be arranged once get your payment or deposit.

4) Goods will be delivered as stated on the Proforma Invoice.

Q: How will you deliver my goods to me?

A: We provide as many shipping options as possible, such as DHL, UPS, FEDEX, TNT AND EMS to enable our customers get their goods rapidly at door. We also ship by economical method such as air cargo and sea cargo, direct line, air mail according to customers' request.

Q: What about the quality of your product?

A: We provide unrivaled quality: very rigorous testing process for incoming quality control, input process quality control, and final quantity control for every piece. We follow QC test procedure, and do 100% FQC to ensure your satisfaction.

Q: Can you provide OEM service?

A: Yes! We can provide professional OEM service.

Q: Do you have any after-sales service?

A: Yes! Our product has professional after-sales service dept. Follow up R.M.A. Items service and upload product firmware and app for you download.

If you have any technical questions with the goods, please feel freely to contact our technical support dept, or our sales directly.



Shenzhen ChengHao Optoelectronic Co., Ltd.



+86 755-27806536



add@chenghaolcm.com



chenghaolcd.com

7th floor, building C5, Hengfeng Industrial City, Hangcheng street, Bao'an District, Shenzhen