



WVGA 800x480 Resolution TFT LCD Display 7" 50 Pin RGB Interface With SSD1963

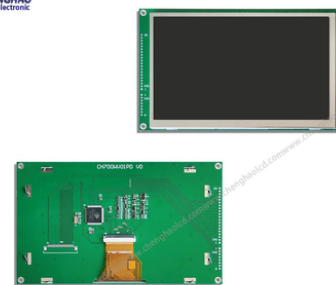
Basic Information

- Place of Origin: ShenZhen, China
- Brand Name: Chenghao/Oem
- Certification: ROHS ISO9001 CE
- Model Number: CH700WV01B-PD
- Minimum Order Quantity: 100 pcs
- Price: /
- Packaging Details: All the products are packed in right way to keep it safe. For small sizes of products we use tray + carton, For bigger sizes we use foam slot + carton. we also design packages according to customers' requirements
- Delivery Time: 7-15 working days
- Payment Terms: T/T
- Supply Ability: 300Kpcs/month



Product Specification

- Product Name: WVGA 800x480 Resolution TFT LCD Display
- Dot Arrangement: 800*480
- Backlight Type And Color: White LED
- TFT Interface: RGB
- Display Model: TN/ Normally White
- Backlight: 500 Nits
- Contrast: 500
- TFT Color: 16.7M
- Highlight: WVGA TFT LCD Display ,
800x480 Resolution TFT LCD Display ,
SSD1963 TFT LCD Display



Product Description

WVGA 800x480 Resolution TFT LCD Display 7" 50 Pin RGB Interface With SSD1963

1. Specification

Part No.	CH700WV01B-PD
Size	7.0 inch
Resolution	800*480(WVGA) dot
Outline Dimension	186.8*109*13.4 mm
Active Area	154.08*85.92 mm
Interface	RGB
IC	SSD1963
FPC Number	50pin
Working temperature	-20°C ~ 70°C
Storage temperature	-20°C ~ 80°C
Delivery Time	10 days

2. Description

Chenghao Optoelectronic CH700WV01B-PD is a 7.0 inch TN tft lcd module with RGB interface. This tft lcd module includes components such as Driver board, iron frame, tft lcd panel, driver IC, back light (BL) and FPC.

This Driver board contains the program to drive the tft lcd to work normally, and is fixed under the 7 inch tft display by an iron frame.

The tft lcd panel has a 7.0 inch active display area that can display 800x (RGB) x480 resolution images.

The driver IC is fixed on the tft lcd glass panel, supports RGB interface, and can display 16M colors.

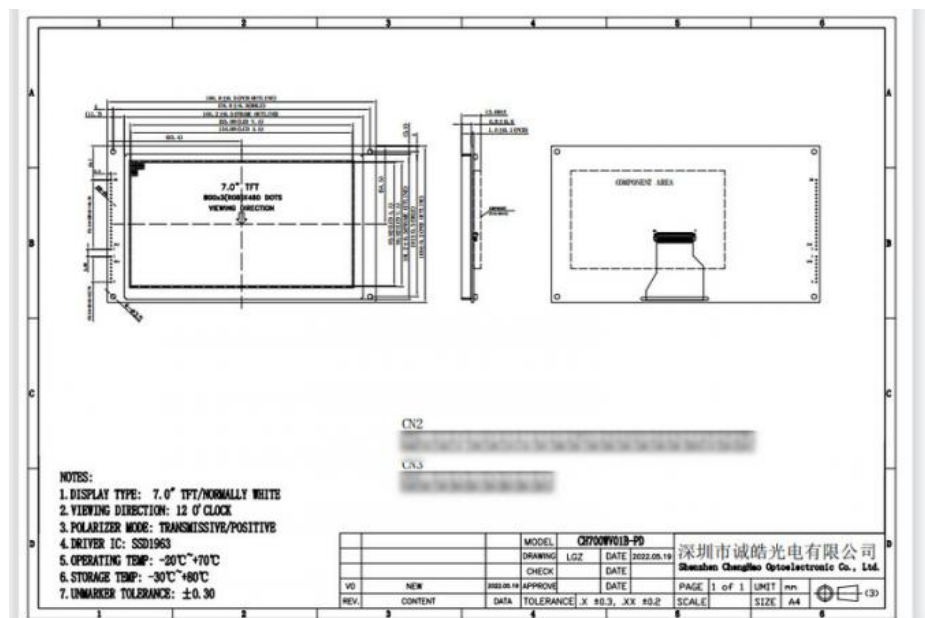
The Luminance of the back light is 500 cd/m2, which makes the 800x480 tft display sunlight readable.

FPC can be modified and customized according to customer requirements, and the customized content includes shape structure, interface definition, etc.

3. Drawings

Notes:

- (1) Display Type : 7inch TFT
- (2) Viewing Direction : 12 O'clock
- (4) Polarizer Mode : Transmissive/Normally White
- (5) Operating Temp : -20~70 °C
- (6) Storage Temp : -30~80 °C
- (7) Unmarker Tolerance: ± 0.20
- (8) Protection : ROHS



4. Quick Detail

LCM number : CH700WV01B-PD

Resolution : 800x480(WVGA) dot

Dot pitch : ----

Outline dimension : 186.8*109*13.4 mm

Active Area : 154.08*85.92 mm

View angle: 12:00

Pixel Arrangement : RGB-stripe

Surface Treatment : Plant

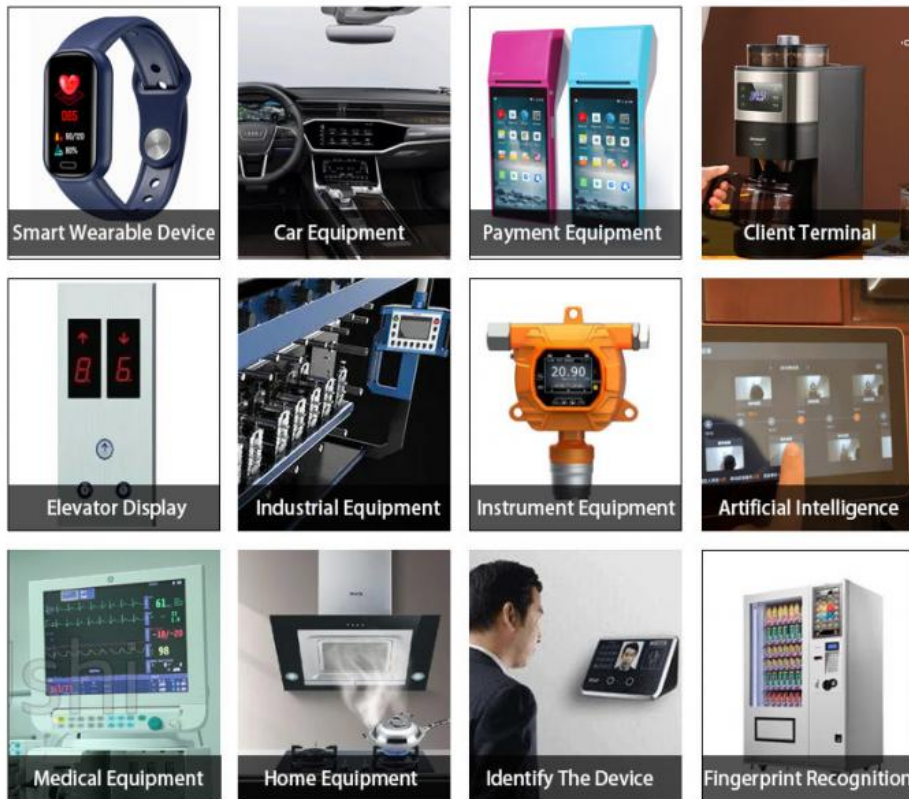
TFT Electrical Interface : RGB

Brightness : 500 cd/m2

Tft driver IC : SSD1963

Contrast ratio : 500
Backlight Type : white led
Display mode : Tn/transmission/ Normally white
Operate temperature : -20~ +70(°C)
Storage temperature : -30~ + 80(°C)
Display Colors : 16.7M
Backlight lifetime : 20k hrs(Min.)

5. Application



6. FAQ

Q1: Do you testing the products before shipment?

A: we tested every products quality before send out .

Q2: What is your payment methods ?

A: T/T,Paypal,West Union and so on .

Q3:What's the lead time?Sample order is available?

A: lead time : 7-15 working days. We don't have MOQ, Sample order is ok.

Q4:Can you produce according to the samples?

A: Yes, we can produce by your samples or technical drawings design , we can also build the molds.

Q5. What is your terms of packing?

A: Generally, we pack our goods in standard package , also if you have legally registered patent, we can pack the goods in your branded boxes.



Shenzhen ChengHao Optoelectronic Co., Ltd.



+86 755-27806536



add@chenghaolcm.com



chenghaolcd.com

7th floor, building C5, Hengfeng Industrial City, Hangcheng street, Bao'an District, Shenzhen