



Sunlight Readable LCD Display Module 7 Inch 800x480 With RGB Interface

Our Product Introduction

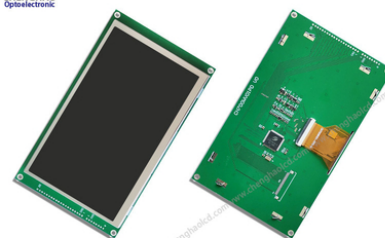
Basic Information

- Place of Origin: ShenZhen, China
- Brand Name: Chenghao/Oem
- Certification: ROHS ISO9001 CE
- Model Number: CH700WV01B-PD
- Minimum Order Quantity: 100 pcs
- Price: /
- Packaging Details: All the products are packed in right way to keep it safe. For small sizes of products we use tray + carton, For bigger sizes we use foam slot + carton. we also design packages according to customers' requirements
- Delivery Time: 7-15 working days
- Payment Terms: T/T
- Supply Ability: 300Kpcs/month



Product Specification

- Product Name: Sunlight Readable LCD Display Module
- Number Of Dots: 800x480
- Lcd Type: 7.0"TFT+PCB
- Viewing Direction: 12:00
- Operating Temp: -20 ~ +70
- Storage Temp: -30 ~ +80
- IC: SSD1963 IC
- FPC Number: 50pin
- Highlight: Sunlight Readable LCD Display 800x480, RGB Interface LCD Display Module, SSD1963 IC LCD Display Module



Product Description

Sunlight Readable LCD Display Module 7 Inch 800x480 With RGB Interface

1. Specification

ITEM	STANDARD VALUES	UNITS
LCD type	7 inch TFT	--
Dot arrangement	800*(RGB)*480	dots
Driver IC	SSD1963	--
Module size	186.8*109*13.4	mm
Active area	154.08*85.92	mm
Operating temperature	- 20 ~ + 70	°C
Storage temperature	- 30 ~ + 80	°C
Back Light	White LED	--

2. Description

CH700WV01B-PD is a 7.0 inch high backlight TFT Lcd Module with RGB interface from Chenghao Optoelectronic. It includes an lcd panel, a driver IC, a PCB driver board, a backlight, an iron frame and FPC and other components.

This lcd panel is of TFT type and has a color display area with a diagonal length of 7.0 inches. Using IPS display technology, it can display 800x480 resolution images and supports all IPS viewing angles.

The model of the driver IC is SSD1963, which is fixedly installed on the lcd panel and connected to the FPC. 16M colors can be displayed by inputting RGB signals to the driver IC. RGB interface is supported.

The PCB driver board stores drivers and connects with the LCD screen and external devices through connectors.

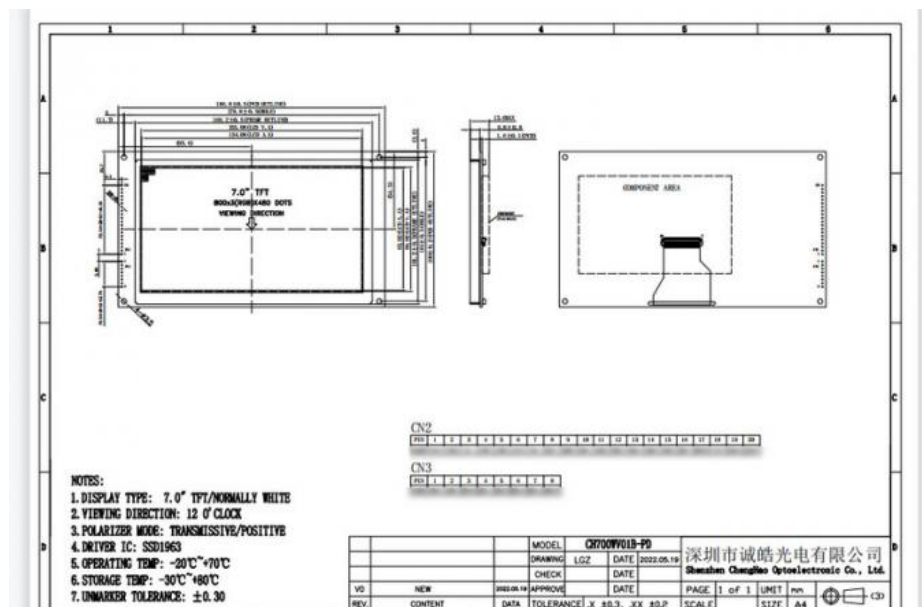
The back light assembly provides over 500 cd/m2 Luminance backlight, which makes this 7 inch tft display sunlight readable. The number of pins of The FPC is 50pin, and its shape and structure can be modified and customized according to customer requirements.

If this 7.0 inch tft lcd module does not meet your project requirements, we also have many display solutions similar to CH700WV01B-PD for you to choose from, you can contact us through online customer service or email, we are very much looking forward to working with you Cooperation.

3. Drawings

Notes:

- (1) Display Type : 7" TFT
- (2) Viewing Direction : 12:00
- (3) Lcd Drive IC : *****
- (4) Polarizer Mode : Transmissive/Normally White
- (5) Operating Temp : -20~ +70 °C
- (6) Storage Temp : -30~ +80 °C
- (7) Unmarker Tolerance: ±0.20
- (8) Protection : ROHS

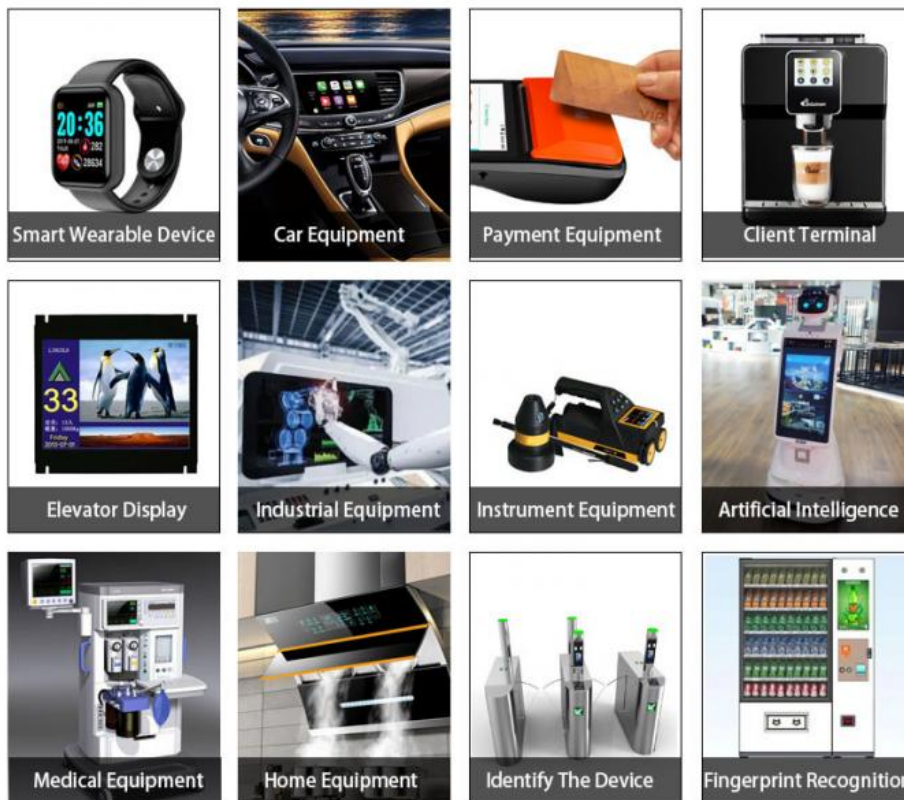


4. Quick Detail

- * LCM name: Sunlight Readable LCD Display Module 7 Inch 800x480 With RGB Interface
- * Lcm Size.: 7.0 inch
- * Display Type: 7" TFT
- * Display colors: 16.7M
- * Number of Dots: 800x480
- * TFT Dot Pitch : ----

- * Viewing Angle: 12 O'clock
- * Driver IC: SSD1963
- * Display mode: TN/Transmissive/Normally White
- * Module size: 186.8*109*13.4 mm
- * TFT Active Area: 154.08*85.92 mm
- * Luminance: 500 cd/m2
- * Contrast: 500:1
- * TFT Interface Type: RGB
- * Pin Number: 50
- * Backlight type : White LED
- Backlight: 6 pcs LED

5. Application



6. FAQ

1.What advantages do you have?

A: Fast delivery time, can support sample services, products are in stock, can be supplied at any time, 24 hours online service, products have passed strict certification, and the buyer has good results.

2.Q: How can I get the samples?

A: Send inquiry → Offer quotation → Confirm quotation & pay tooling charge → Provide drawing → confirm drawing → make tooling & samples → Samples finished → Delivery via freight or sea collect.

3.Q: How long can I expect to get the sample?

A: Contour drawing: 2-4 days Sample time: 7-15 days.

4.Q: Can you design the lcd in accordance with our demand?

A: Sure.We will give you the best tooling charge.

5.Q: How to place orders ?

A: If you confirm samples ok, Please send us your purchase order by Email or Fax , Then we will send you an Invoice for deposit payment. We need to know the following information of your order.

- (1) Product information-Quantity,model number
- (2) Shipping information-Company name, Street address, Phone&Fax number, Destination sea port.
- (3) Forwarder's contact details if you have any in China.

6. Q: How can you guarantee the production quality ?

A: Our production quality follow ISO9000 standard system, stable design team,10 years experience of QC team and strictly quality control system guarantee the production quality. accept third part Inspection,high&low temperature storage&operating test during high.





Shenzhen Chenghao Optoelectronic Co., Ltd.



+86 755-27806536



add@chenghaolcm.com



chenghaolcd.com

7th floor, building C5, Hengfeng Industrial City, Hangcheng street, Bao'an District, Shenzhen