



Hight Brightness TFT LCD Display 7.0 Inch 800x480 Resolution With PCB Driver Board

Our Product Introduction

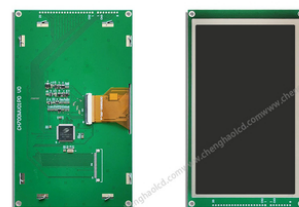
Basic Information

- Place of Origin: ShenZhen, China
- Brand Name: Chenghao/Oem
- Certification: ROHS ISO9001 CE
- Model Number: CH700WV01B-PD
- Minimum Order Quantity: 100 pcs
- Price: Negotiation
- Packaging Details: All the products are packed in right way to keep it safe. For small sizes of products we use tray + carton, For bigger sizes we use foam slot + carton. we also design packages according to customers' requirements
- Delivery Time: 7-15 working days
- Payment Terms: T/T
- Supply Ability: 300Kpcs/month



Product Specification

- Product Name: Hight Brightness TFT LCD Display
- Size/ Inch: 7.0 Inch
- Resolution: 800*(RGB)*480 Dots
- Interface: RGB
- Luminance: 500 Cd/m2
- Display Model: TN/Transmissive/Normally White
- Backlight Type: White LED
- Color: 16M
- Highlight: 800x480 dots TFT LCD Display,
500 cd/m2 TFT LCD Display,
RGB 7 inch tft lcd display



Product Description

Hight Brightness TFT LCD Display 7.0 Inch 800x480 Resolution

1. Specification

| ITEM | STANDARD VALUES | UNITS |
|-----------------------|-----------------|-------|
| LCD type | 7.0" TFT | -- |
| Dot arrangement | 800x480 | dots |
| Driver IC | SSD1963 | -- |
| Module size | 186.8*109*13.4 | mm |
| Active area | 154.08*85.92 | mm |
| Operating temperature | - 20 ~ + 70 | °C |
| Storage temperature | - 30 ~ + 80 | °C |
| Back Light | White LED | -- |
| Weight | TBD | g |

2. Description

ChengHao Display model CH700WV01B-PD is a color active matrix thin film transistor (TFT) liquid crystal display (LCD) that uses amorphous silicon TFT as a switching device. This model is composed of a TFT LCD panel, a driving IC, a back-light and FPC.

This TFT LCD has a 7.0 (Horizontal screen) inch diagonally measured active display area with 800*3(RGB)*480 resolution.

The driver used for this project is the SSD1963 and can display 16M colors by R.G.B. signal input. The driver is mounted on the glass and the interconnection via FPC including components to drive the display module. RGB interface is supported.

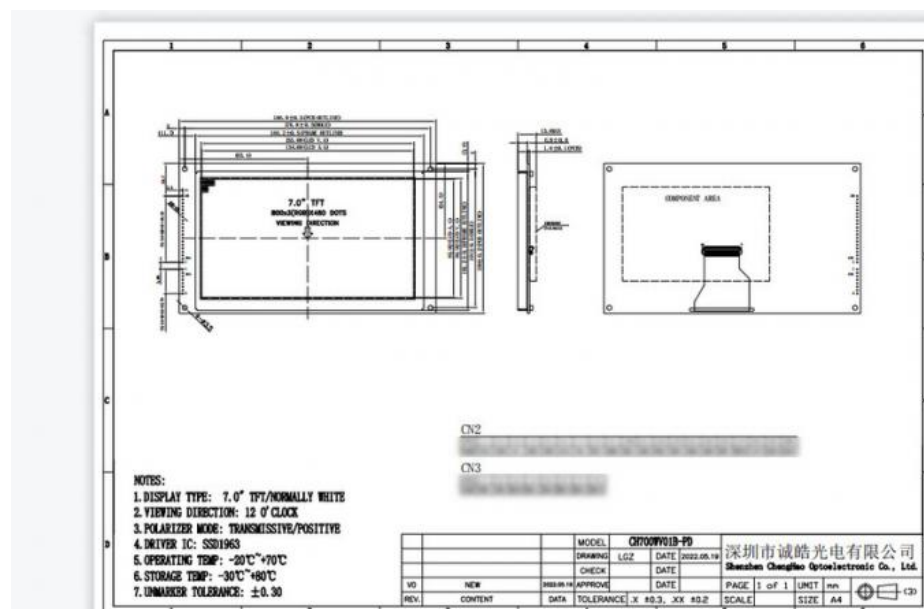
In addition, FPC can also be customized according to customer requirements, such as modifying back-light and FPC structure, interface definition, etc.

RoHS Compliance & Halogen Free.

Contact Us to get the Detailed Datasheet

[Please Click Here](#)

3. Drawing



4. Quick Detail

LCM number : CH700WV01B-PD

Resolution : 800x480 dot

Dot pitch : *****

Outline dimension : 186.8*109*13.4 mm

Active Area : 154.08*85.92 mm

View angle: 12:00

Pixel Arrangement : RGB-stripe

Surface Treatment : Plant
 TFT Electrical Interface : RGB
 Brightness : 500 (cd/m2)
 Tft driver IC : SSD1963
 Contrast ratio : 500
 Backlight Type : White LED
 Response time : ***** (ms)
 Display mode : TN, Normally White, Transmissive
 Operate temperature : -20~ +70(°C)
 Storage temperature : -30~ +80(°C)
 Display Colors : 16.7M
 Power Supply Voltage : 3.3v(Typ.)
 Backlight lifetime : 20k hrs(Min.)
 With/without Touch Panel:Without

5. Application



6. FAQ

1. who are we?

We are based in Guangdong, China, start from 2015, sell to Domestic Market(33.00%), North America(20.00%), Western Europe(19.00%), Eastern Europe(10.00%), Southeast Asia(7.00%), Northern Europe(5.00%), Eastern Asia(3.00%), South Asia(2.00%), Oceania(00.00%). There are total about 51-100 people in our office.

2. how can we guarantee quality?

Always a pre-production sample before mass production;
 Always final inspection before shipment;

3. what can you buy from us?

Sensor Module, Display Module, Power Module, Wireless Module, PCB.

4. why should you buy from us not from other suppliers?

Established in 2015 shenzhen private high quantity Electronic modules, processors and microcontrollers, embedded peripheral chips, logic chips, memory, power chips, drivers, sensors, crystals and so on. Work area 1001-2000 square meters more than 100 people.



Shenzhen ChengHao Optoelectronic Co., Ltd.



+86 755-27806536



add@chenghaolcm.com



chenghaolcd.com

