



4.41inch TFT LCD Display Module Hight Brightness 1920x1080 Full HD IPS All Viewing Angle

Our Product Introduction

Basic Information

- Place of Origin: ShenZhen, China
- Brand Name: Chenghao/Oem
- Certification: ROHS ISO9001 CE
- Model Number: CH441FH01A
- Minimum Order Quantity: 100 pcs
- Price: /
- Packaging Details: All the products are packed in right way to keep it safe. For small sizes of products we use tray + carton, For bigger sizes we use foam slot + carton. we also design packages according to customers' requirements
- Delivery Time: 7-15 working days
- Payment Terms: T/T
- Supply Ability: 300Kpcs/month



Product Specification

- Product Name: Hight Brightness Tft Lcd Display
- Dot Arrangement: 1920x1080
- Product Size: 4.41 Inch
- Backlight Type: White LED
- TFT Interface: LVDS
- Luminance: >1000 Cd/m2
- Contrast: 800
- Highlight: 4.41inch TFT LCD display module,
1920x1080 TFT LCD display module,
HD IPS small TFT LCD display



Product Description

High Brightness Tft Lcd Display 4.41inch 1920x1080 Full HD IPS All Viewing Angle

1. Specification

Part No.	CH441FH01A
Size	4.41 inch
Resolution	1920x1080 dot
Outline Dimension	106.7(W) x 66.1(H) x 2.8(T) mm
Active Area	97.63(W) x 54.92(H) mm
Interface	LVDS
IC	---
FPC	60pin
Working temperature	-20°C ~ 70°C
Storage temperature	-20°C ~ 70°C
Delivery Time	10 days

2. Description

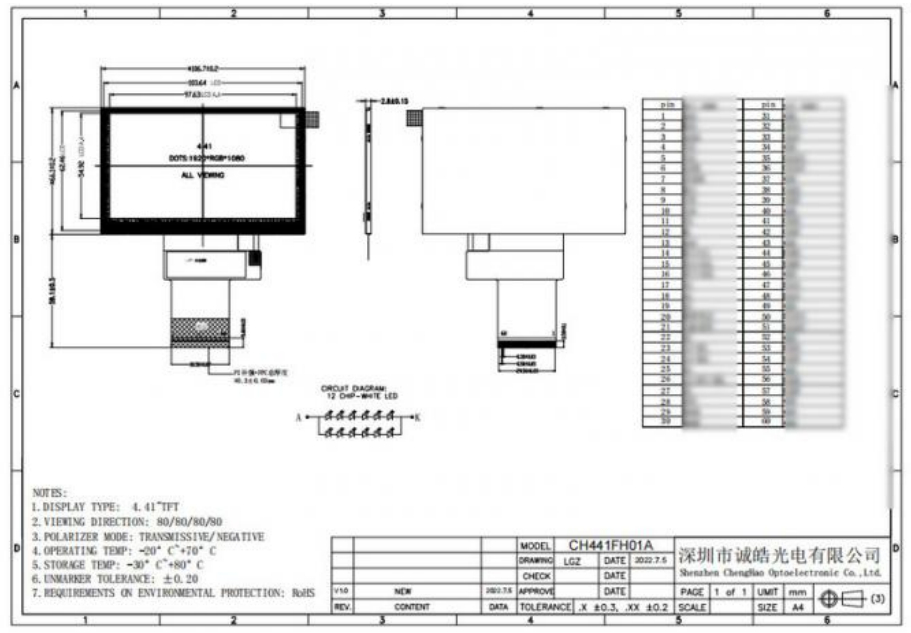
CH441FH01A is a 4.41 inch full HD IPS LCD screen customized by Chenghao Optoelectronic for customers. The resolution of the display area is 1920x1080 resolution. Using LVDS interface, it can display 16M colors. The backlight assembly contains 12 pcs white led, which can make the backlight brightness of the 4.41 FHD tft display exceed 1000 cd/m2 luminance, so as to achieve sunlight readable characteristics. Due to the use of IPS display technology, the FHD IPS tft lcd has 80/80/80/80 ultra-wide viewing angles. The number of pins of FPC is 60pin, which can be modified and customized according to customer requirements.

If you want to know more about the 4.41 inch tft display, you are welcome to contact us.

3. Drawings

Notes:

- (1) Display Type : 4.41 inch IPS TFT
- (2) Viewing Direction : 80/80/80/80
- (4) Polarizer Mode : Transmissive/Negative
- (5) Operating Temp : -20~70 °C
- (6) Storage Temp : -30~80 °C
- (7) Unmarker Tolerance: ± 0.20
- (8) Protection : ROHS



4. Quick Detail

LCM number : CH441FH01A
Resolution : 1920*1080 dot
Dot pitch : ---
Outline dimension : 106.7x66.1 x2.8 mm
Active Area : 97.63x54.92 mm
View angle: All viewing angle
Pixel Arrangement : RGB-stripe
Surface Treatment : Plant
TFT Electrical Interface : LVDS
Brightness : 1000 cd/m2 (optional)
Tft driver IC : ---

Contrast ratio : 800
Backlight : 12 pcs white led
Display mode : ips/transmission/ Normally black
Operate temperature : -20~ +70(°C)
Storage temperature : -30~ +80(°C)
Display Colors : 16.7m
Backlight lifetime : 20k hrs(Min.)

5. Application



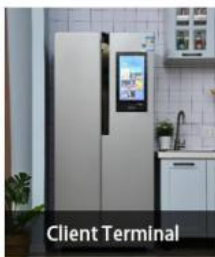
Smart Wearable Device



Car Equipment



Payment Equipment



Client Terminal



Elevator Display



Industrial Equipment



Instrument Equipment



Artificial Intelligence



Medical Equipment



Home Equipment



Identify The Device



Fingerprint Recognition

6. Our Service

Shipping Policy:

- 1- Regularly, we shipped via Fedex/Dhl/UPS , express way (2-7 working days arrival), suitable for small order.
- 2- Sea shipping way, (25-40 days arrival), low cost, port to port, usually for large quantity order.

Custom/OEM:

Custom service is ok.

Sample Policy:

- 1- Usually we offer random sample for free but with your sample shipping freight charge paid.
- 2- We offer 1-2 pcs each sample randomly, if for more pcs, we will try send to you, if not and you must

request more pcs, we will charge same sample fees for make more pcs samples to you.

Easy order process:

Please kindly confirm us about product name, images, colors and quantity before you make the order .



Shenzhen ChengHao Optoelectronic Co., Ltd.



+86 755-27806536



add@chenghaolcm.com



chenghaolcd.com

7th floor, building C5, Hengfeng Industrial City, Hangcheng street, Bao'an District, Shenzhen