



## Full Hight Definition IPS TFT LCD Display 4.41" 1920\*1080 Resolution With LVDS Interface

### Our Product Introduction

#### Basic Information

- Place of Origin: ShenZhen, China
- Brand Name: Chenghao/Oem
- Certification: ROHS ISO9001 CE
- Model Number: CH441FH01A
- Minimum Order Quantity: 100 pcs
- Price: /
- Packaging Details: All the products are packed in right way to keep it safe. For small sizes of products we use tray + carton, For bigger sizes we use foam slot + carton. we also design packages according to customers' requirements
- Delivery Time: 7-15 working days
- Payment Terms: T/T
- Supply Ability: 300Kpcs/month



#### Product Specification

- Product Name: Full Hight Definition Tft Lcd
- Resolution: 1920\*1080 Dot
- Display Model: IPS
- Display Color: 16M
- ASSY.TYPE: COG+FPC+BL
- BACKLIGHT: White Led
- WEIGHT: TBD G
- Interface: LVDS
- Highlight: 1920x1080 dot TFT LCD display ,  
4.41" IPS TFT LCD display ,  
LVDS Interface IPS TFT LCD display



## Product Description

### Full Hight Definition Tft Lcd 4.41" 1920\*1080 Resolution With LVDS Interface

#### 1. Specification

ITEM	STANDARD VALUES	UNITS
LCD type	4.41 inch TFT	--
Dot arrangement	1920*1080	dots
Driver IC	*****	--
Module size	106.7(W) x66.1(H) x2.8(T)	mm
Active area	97.63(W) x54.92(H)	mm
Dot pitch	----	mm
Operating temperature	- 20 ~ + 70	°C
Storage temperature	- 30 ~ + 80	°C
Back Light	White LED	--
Weight	TBD	g

#### 2. Description

Chenghao Optoelectronic CH441FH01A is a 4.41 inch full HD LCD display with a 4.41 inch diagonal color display area, which can display 1920x1080 Resolution FHD images.

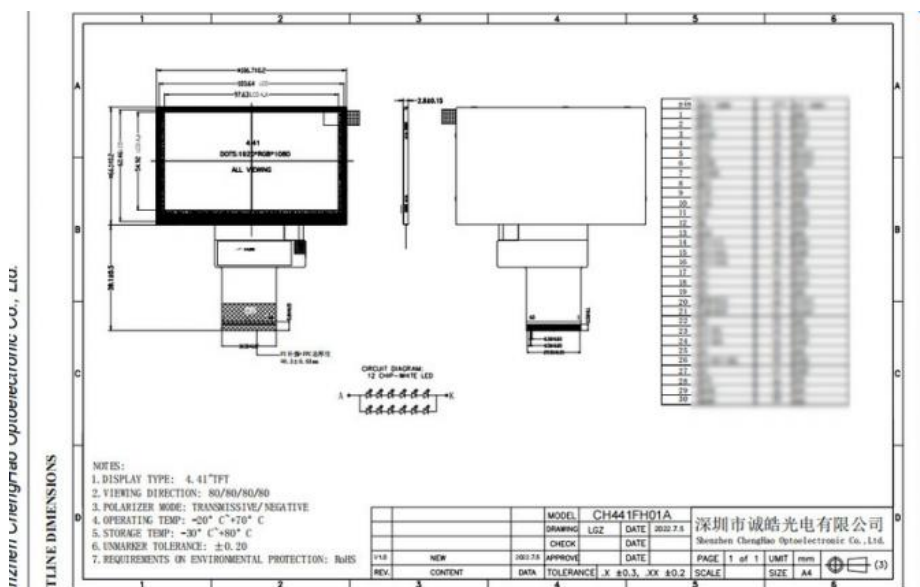
- (1) This 4.41 FHD display adopts IPS TFT display technology and has a full viewing angle of 80/80/80/80.
- (2) Due to the use of high-brightness backlight components (>1000 cd/m2), the FHD display supports sunlight viewing.
- (3) The driver IC is fixed on the glass panel, using the LVDS interface, it can drive the display to display 16M colors.
- (4) The number of pins of The FPC is 60pin.

The 4.41 tft display module can be modified according to customer requirements. The modified content includes the brightness of BL, the shape and structure of FPC, and the definition of interface types.

#### 3. Drawings

Notes:

- (1) Display Type : 4.41" TFT
- (2) Viewing Direction : 80/80/80/80
- (3) Lcd Drive IC : #####
- (4) Polarizer Mode : Transmissive/ Negative
- (5) Operating Temp : -20~70 °C
- (6) Storage Temp : -30~80 °C
- (7) Unmarker Tolerance: ±0.20
- (8) Protection : ROHS

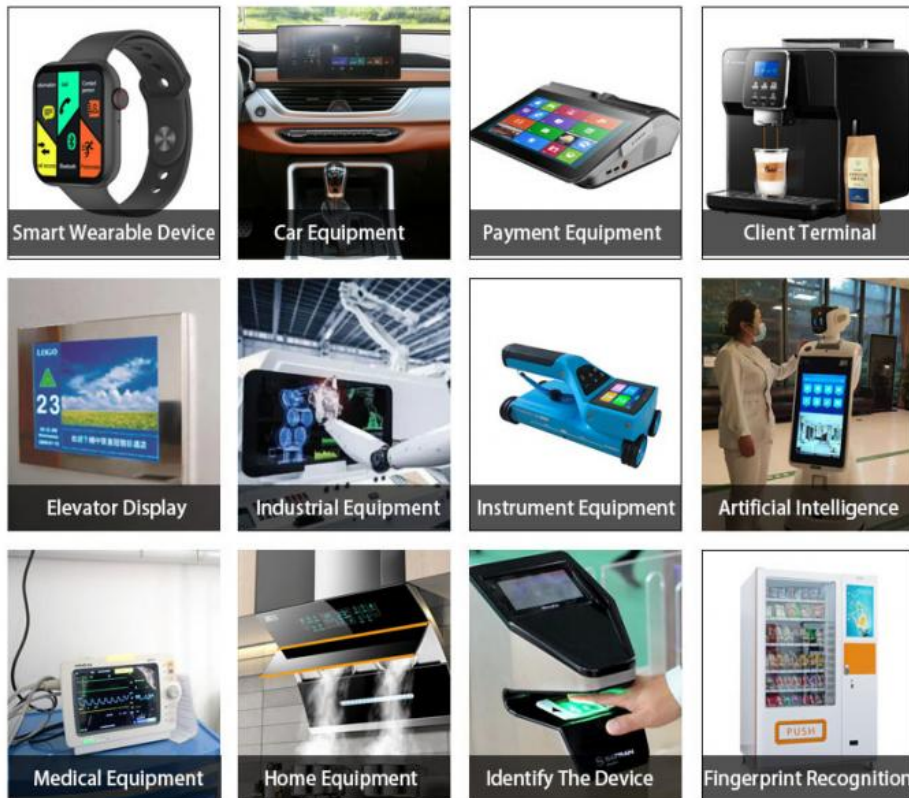


#### 4. Quick Detail

- \* LCM name: Full Hight Definition Tft Lcd 4.41" 1920\*1080 Resolution With LVDS Interface
- \* Model: CH441FH01A
- \* Lcm Size.: 4.41 inch
- \* Display Type: 4.41 inch TFT
- \* Display colors: 16.7M
- \* Number of Dots: 1920x1080
- \* TFT Dot Pitch : ----
- \* Viewing Angle: All

- \* Driver IC: \*\*\*\*\*
- \* Display mode: IPS/Transmissive/Normally Black
- \* Module size: 106.7(W ) x66.1(H) x2.8(T) mm
- \* TFT Active Area: 97.63(W) x54.92(H) mm
- \* Luminance: >1000 cd/m2
- \* Contrast: 800
- \* TFT Interface Type: LVDS
- \* Pin Number: 60
- \* Backlight type : White LED
- Backlight: 12 LED

## 5. Application



## 6. FAQ

Q1: Are you manufacturer ?

A: Yes, we are manufacturer.

Q2: How long is your delivery time?

A: Normally 3-5 working days after payment; Special requirement orders, delivery time is negotiable.

Q3: If the products can't work after receiving it, what should I do?

A: We will replace new items for you at once and then we make the judgement for the issue.

Q4: Do you accept OEM design?

A: Yes, we do. We can design according to your requirement, MOQ usually 100-1000.

Q5: Do you accept pay 30% in advance?

A: Yes, we do. We can start to prepare your goods when receive 30% payment, and send them after get the rest 70% payment.

Q6: What payment terms you accept?

A: We accept Paypal, T/T, Western Union, Wechat, Alipay, in Cash (RMB or USD).



**Shenzhen ChengHao Optoelectronic Co., Ltd.**



+86 755-27806536



add@chenghaolcm.com



chenghaolcd.com

7th floor, building C5, Hengfeng Industrial City, Hangcheng street, Bao'an District, Shenzhen