



HD IPS TFT Display 4.3 Inch 1280x720 Resolution With LVDS Interface

Our Product Introduction

Basic Information

- Place of Origin: ShenZhen, China
- Brand Name: Chenghao/Oem
- Certification: ROHS ISO9001 CE
- Model Number: CH430HD01A
- Minimum Order Quantity: 100 pcs
- Price: /
- Packaging Details: All the products are packed in right way to keep it safe. For small sizes of products we use tray + carton, For bigger sizes we use foam slot + carton. we also design packages according to customers' requirements
- Delivery Time: 7-15 working days
- Payment Terms: T/T
- Supply Ability: 300Kpcs/month



Product Specification

- Product Name: 4.3 Inch HD IPS TFT Display
- OUTLINE DIMENSIONS: 106.7(W) X 66.1(H) X 2.8(T) Mm
- ACTIVE AREA: 97.536(W) X 54.864(H) Mm
- PIXEL ARRANGEMENT: RGB VERTICAL STRIPE
- NUMBER OF DOTS: 1280 X RGB X 720 Dot
- DOT PITCH: ***
- VIEWING DIRECTION: ALL
- Highlight: IPS TFT Display 4.3 Inch,
IPS TFT Display 1280x720,
LVDS Interface 4.3 inch tft lcd display



More Images



Product Description

HD IPS TFT Display 4.3 Inch 1280x720 Resolution With LVDS Interface

1. Specification

ITEM	STANDARD VALUES	UNITS
LCD type	4.3"	--
Dot arrangement	1280x720	dots
Driver IC	*****	--
Module size	106.7(W) x66.1(H) x2.8(T)	mm
Active area	97.536(W) x54.864(H)	mm
Operating temperature	- 20 ~ + 70	°C
Storage temperature	- 30 ~ + 80	°C
Back Light	12 pcs White LED	--
Weight	TBD	g

2. Description

CH430HD01A is a high-definition LCD screen designed and mass-produced by Chenghao Optoelectronic to meet market demand. It includes a tft lcd panel, a driver IC, a backlight and FPC components.

This tft lcd panel has a display area measuring 4.3 inch diagonally and can display 1280x720 resolution HD video animation. At the same time, due to the adoption of IPS display technology, the 4.3 HD tft display has a full viewing angle of 80/80/80/80, which allows users to obtain a better viewing angle experience.

The back light is also another highlight of CH430HD01A. Since 12 pcs white is used as the light source in the Back light module, the luminance of this module reaches more than 1000 cd/m2, so the HD ips tft lcd can be read in sunlight.

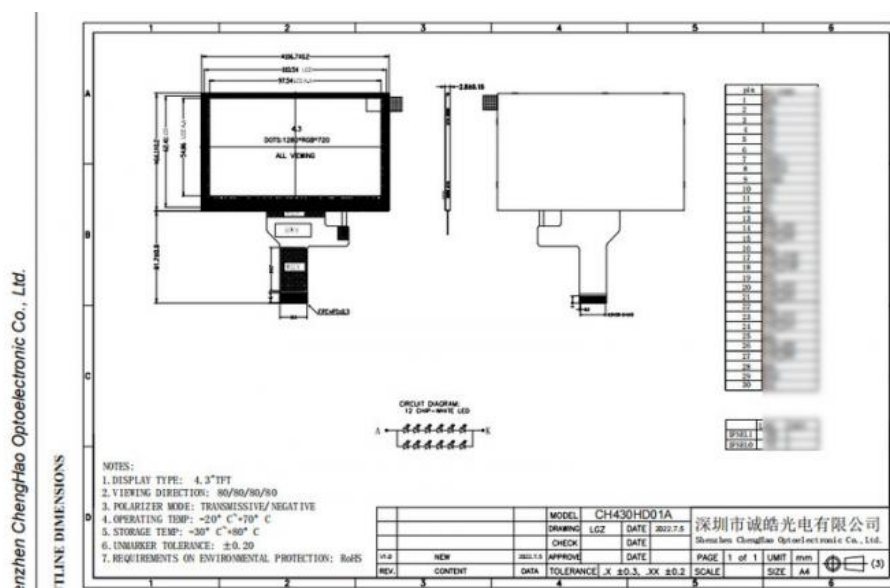
The driver IC is firmly attached to the tft lcd glass panel, and uses the LVDS interface to interconnect with external devices. When inputting RGB signals, the driver IC can drive the module to display 16M colors.

The FPC can be customized according to customer requirements.

Contact Us to get the Detailed Datasheet

[Please Click Here](#)

3. Drawing



4. Quick Detail

Product Name: HD IPS TFT Display 4.3 Inch 1280x720 Resolution With LVDS Interface

Model No:CH430HD01A
 With or Without TP:No
 Support TP Type:CTP,RTP
 LCD type: 4.3 inch TFT
 Dot arrangement:1280*(RGB)*720
 Color filter array: RGB vertical stripe
 Display mode: IPS / Transmissive / Normally Black
 Viewing Direction: 80/80/80/80
 TFT Driver IC: *****
 Color:16M
 Contrast:800:1
 Module size:106.7(W) x66.1(H) x2.8(T) mm
 TFT Active area:97.536(W) x54.864(H) mm
 TFT Interface: LVDS
 FPC Pin Number:30
 Operating temperature: -20 ~ +60 °C
 Storage temperature: -30 ~ +70 °C
 Back Light: 12 White LED
 Weight:TBD g

5. Application



Smart Wearable Device



Car Equipment



Payment Equipment



Client Terminal



Elevator Display



Industrial Equipment



Instrument Equipment



Artificial Intelligence



Medical Equipment



Home Equipment



Identify The Device



Fingerprint Recognition

6. FAQ

Q1: Do you accept customization displays and touch screens?

A: Sure, you can customization the FPC,Backlight and the touch screen.

Q2: What type of interface is your display screen?

A: Small sized of displays generally support SPI,MCU,RGB,MIPI.Medium sized displays generally support LVDS,MIPI,EDP.Different specifications use different interfaces.

Q3: Do you used capacitive touch screen or resistive touch screen.

A: We have capacitive touch screen and resistive touch screen .

Q4: What is your sample policy?

A: If there is stock,you can sample at any time,if there is no stock,it will take some time,and then wait for the materials to come back to sample. But the customer needs to pay the sample fee and express fee.

Q5: How long is your lead time for mass production?

A: It takes about 20 - 45 working days for mass production,depending on the model and order quantity.

Q6: How to ensure long-term stable delivery?

A: First,we will recommend products that can be delivered for a long time to customers,and second,we will have a large number of stocks in advance for a long time.

Q7: What is your mode of payment for mass production?

A: Generally,after receiving 50%-100% deposit from customers,they begin to prepare materials. Delivery is about 5 working

days after receipt of the final payment.

Q8: Will you inspect the goods before delivery?

A: Yes, we'll ship the goods after 100% inspection.

Q9: How long is your warranty period?

A: We guarantee the quality for one year.



Shenzhen ChengHao Optoelectronic Co., Ltd.



+86 755-27806536



add@chenghaolcm.com



chenghaolcd.com

7th floor, building C5, Hengfeng Industrial City, Hangcheng street, Bao'an District, Shenzhen