



Sunlight Readable Touch Screen Module 2.4 Inch 240*320 14pin SPI Interface

Our Product Introduction

Basic Information

- Place of Origin: ShenZhen, China
- Brand Name: Chenghao/Oem
- Certification: ROHS ISO9001 CE
- Model Number: CH240QV53B-T
- Minimum Order Quantity: 100 pcs
- Price: Negotiation
- Packaging Details: All the products are packed in right way to keep it safe. For small sizes of products we use tray + carton, For bigger sizes we use foam slot + carton. we also design packages according to customers' requirements
- Delivery Time: 7-15 working days
- Payment Terms: T/T
- Supply Ability: 300Kpcs/month



Product Specification

- Product Name: Sunlight Readable Touch Screen Module
- Resolution: Qvga
- Viewing Direction: 6:00
- IC: ST7789
- Interface: SPI
- Operating Temp: -20~70 °C
- Storage Temp: -30~80 °C
- Display Type: 2.4"TFT+RTP
- Highlight: Sunlight Readable Touch Screen Module, 14pin SPI Touch Screen Module, 2.4 Inch Sunlight Readable Lcd Panel



Product Description

Sunlight Readable Touch Screen Module 2.4 Inch 240*320 14pin Spi Interface

1. Specification

ITEM	STANDARD VALUES	UNITS
LCD type	2.4"TFT+TP	--
Dot arrangement	240*320	dots
Driver IC	ST7789	--
Module size	4.272×6.026×0.335	cm
Active area	3.672(W)×4.896(H)	cm
Dot pitch	0.0153 ×0.0153	cm
Operating temperature	- 20 ~ + 70	°C
Storage temperature	- 30 ~ + 80	°C
Back Light	White LED	--
Weight	TBD	g

2. Description

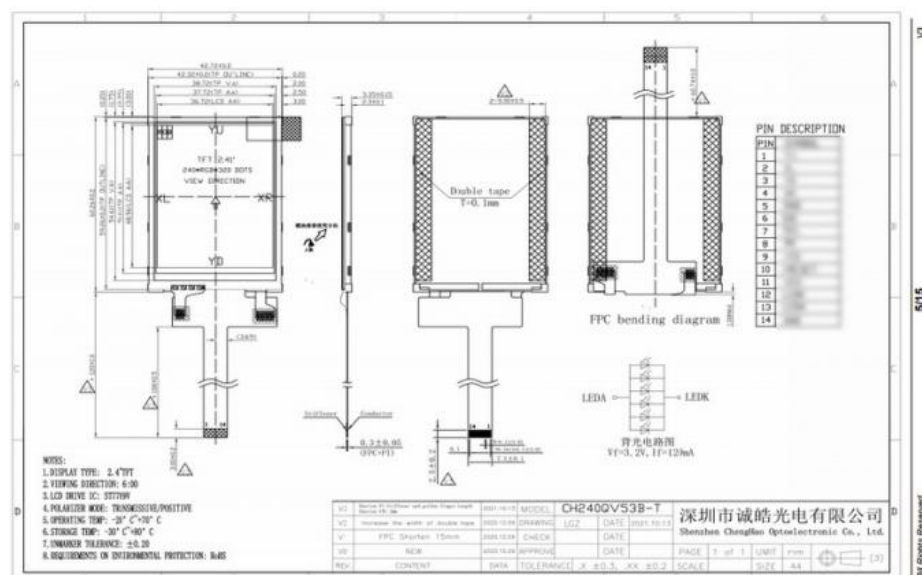
ChengHao Display model CH240QV53B-T is a 2.4 inch color TFT Touch Display, using spi interface, it can display 240*320 Resolution video images. The first feature of The 240x320 tft display is the installation of a Resistive touch panel, which makes it touch-sensitive and supports human-computer interaction. The second feature is the use of a backlight assembly with 6 pcs white led as the light source, which makes its backlight luminance reach 800 cd/m2, thus supporting sunlight readability. The 2.4 Resistive tft display can be modified and customized according to customer requirements, including the removal or replacement of touch function (CTP), the modification of backlight brightness, the design of FPC shape and structure, and the redefinition of interfaces.

If the 240x320 TFT Display can't meet your requirements, you can get other tft lcd module information similar to CH240QV53B-T from us by mail

3. Drawings

Notes:

- (1) Display Type : 2.4 inch TFT+TP
- (2) Viewing Direction : 6:00
- (3) Lcd Drive IC : ST7789V
- (4) Polarizer Mode : Transmissive/ Positive
- (5) Operating Temp : -20~70 °C
- (6) Storage Temp : -30~80 °C
- (7) Unmarker Tolerance: ±0.20
- (8) Protection : ROHS

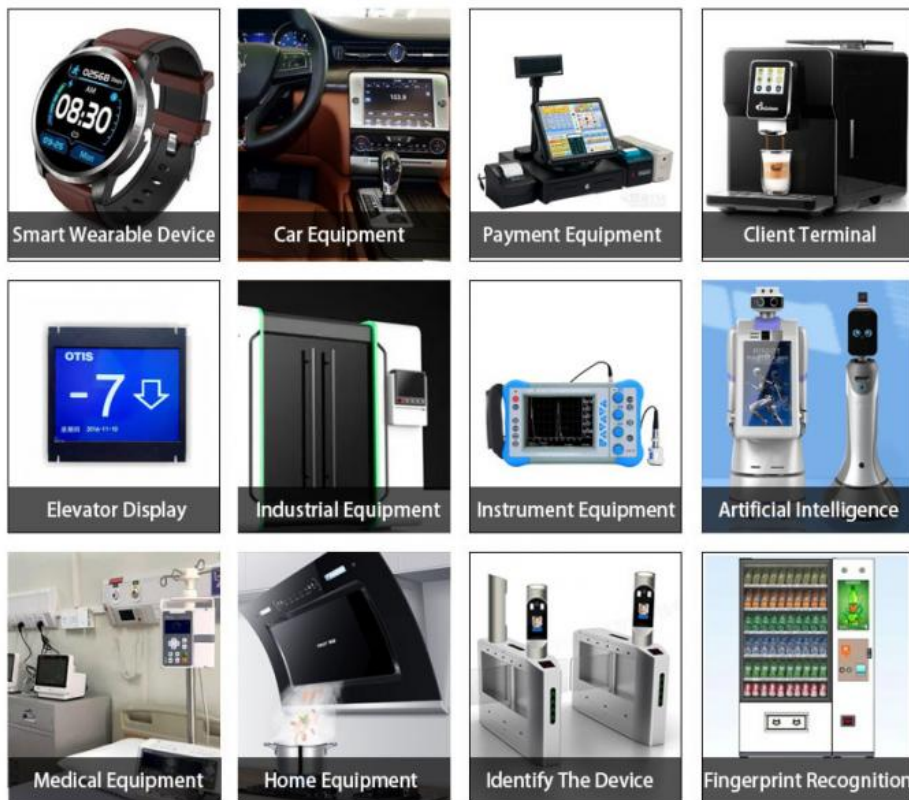


4. Quick Detail

- * LCM name: Sunlight Readable Touch Screen Module 2.4 Inch 240*320 14pin Spi Interface
- * Model: CH240QV53B-T
- * Lcm Size.: 2.4 inch
- * Touch type: RTP
- * Display Type: 2.4inch TFT+TP
- * Display colors: 262K/65K
- * Number of Dots:240x320
- * TFT Dot Pitch : 0.153 (W)×0.153 (H) mm
- * Viewing Angle: 6 o'clock

- * Driver IC: ST7789V
- * Display mode: TN/ Transmission/ Normally white
- * Module size: 42.72(W)×60.26(H)×3.35(T) mm
- * TFT Active Area: 36.72(W)×48.96(H) mm
- * Luminance: 800 nit
- * Contrast: 500:1
- * TFT Interface Type: 4-line_8bit SPI
- * TP Interface Type: usb
- * Pin Number: 14pins
- * Backlight type and color: LED backlight/white
- Backlight: 6 LED

5. Application



6. FAQ

Q:Payment methods?

T/T, Paypal and Western union etc.

For samples: payment in advance.

For mass production: 50% deposit and 50% balance before shipment.

Q: What is the lead time of the products?

A:Samples in stock will be sent within 3 days after payment.

Two to Four weeks for mass production

Q:How long is the warranty period?

A:Generally the warranty period is one year. It depends on different products.

Q:What is the Product MOQ?

A:Different product has the different MOQ, please contact us sales for detailed information.

Q: What's your after-sale service?

A: If any problems, you will get our reply within 24 hours. Solution will be offered instantly by our professional technical team.

Q:Can you provide OEM service?

A:yes, we can provide both OEM and ODM service,can customize products according to the drawings you supply

Q: How can I trust your product quality?

A:The company has advanced the incoming inspection, on-line test and reliability test equipment and system, the company products through the ROHS,CE testing



Shenzhen ChengHao Optoelectronic Co., Ltd.



+86 755-27806536



add@chenghaolcm.com



chenghaolcd.com

7th floor, building C5, Hengfeng Industrial City, Hangcheng street, Bao'an District, Shenzhen