



Capacitive Touch IPS LCD Display 480x480 Resolution 2.1" TFT LCD Display With ST7701S

Our Product Introduction

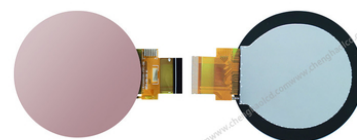
Basic Information

- Place of Origin: ShenZhen, China
- Brand Name: Chenghao/Oem
- Certification: ROHS ISO9001 CE
- Model Number: CH210WV01A-CT
- Minimum Order Quantity: 100 pcs
- Price: Negotiation
- Packaging Details: All the products are packed in right way to keep it safe. For small sizes of products we use tray + carton, For bigger sizes we use foam slot + carton. we also design packages according to customers' requirements
- Delivery Time: 7-15 working days
- Payment Terms: T/T
- Supply Ability: 300Kpcs/month



Product Specification

- Product Name: 2.1 Capacitive Touch IPS LCD Display
- LCD Type: 2.1"TFT + CTP
- Dot Arrangement: 480(RGB)×480 Dots
- Color Filter Array: RGB Vertical Stripe
- Display Mode: IPS / Transmissive / Normally Black
- Viewing Direction: 80/80/80/80
- Module Size: $\phi 71.8 \times 3.65(T)$ Mm
- Active Area: $\phi 53.28$ Mm
- Highlight: Capacitive Touch IPS LCD Display , 480x480 IPS LCD Display , ST7701S TFT LCD Display



Product Description

Capacitive Touch IPS LCD Display 480x480 Resolution 2.1"TFT LCD With ST7701S

1. Specification

ITEM	STANDARD VALUES	UNITS
LCD type	2.1inch TFT+CTP	--
Dot arrangement	480*480	dots
Driver IC	ST7701	--
Module size	φ7.18×0.365(T)	cm
Active area	φ5.328	cm
Dot pitch	0.0111(W)×0.0111(H)	cm
Operating temperature	- 20 ~ + 70	°C
Storage temperature	- 30 ~ + 80	°C
Back Light	4 White LED	--
Weight	TBD	g

2. Description

ChengHao Display model CH210WV01A is a color active matrix thin film transistor (TFT) liquid crystal display (LCD) with 3line SPI + 18bit RGB interface. It includes a capacitive touch panel (CTP), a tft lcd panel, a driver IC, a backlight (BL) and FPC and other components.

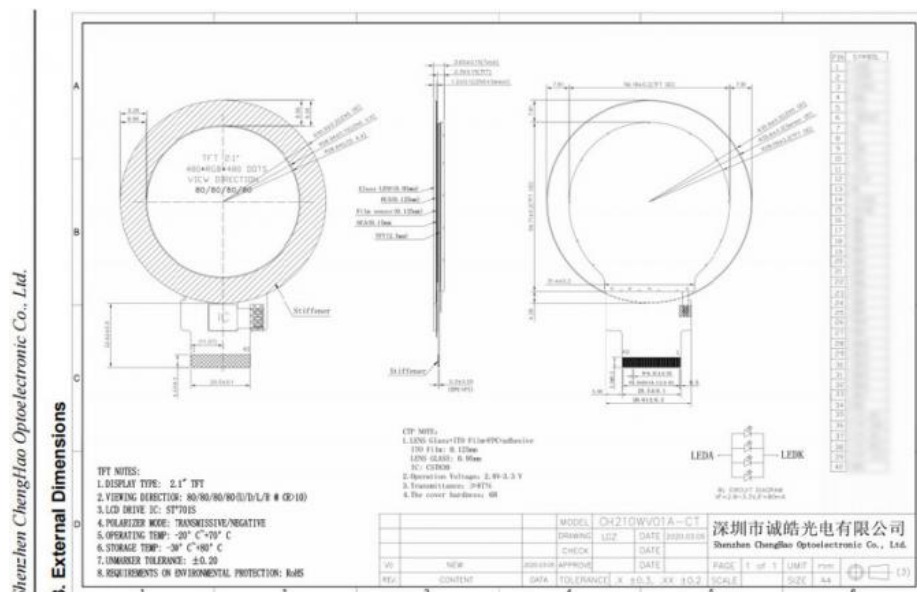
- (1) The CTP has a touch area with a diameter of 2.1 inches, which is connected to the CTP's driver IC (CST830) through FPC. Use I2C interface, support multi-touch.
- (2) The tft lcd panel has a 2.1 inch color display area that can display 480x480 Resolution, uses IPS display technology, and has a full viewing angle of 80/80/80/80.
- (3) The BL uses 4 Pcs white LED as the light source, so that the round tft lcd can produce a luminance of 300 cd/m2.
- (4) The driver IC is fixed on the glass and connected with other components through FPC.
- (5) The number of pins of The FPC is 40pin.

In addition, both the backlight and the FPC can be customized according to customer requirements. The customized content includes the brightness of the backlight, the shape and structure of the FPC, and the definition of the interface.

3. Drawings

Notes:

- (1) Display Type : 2.1 inch TFT+CTP
- (2) Viewing Direction : All Viewing Angle
- (3) Lcd Drive IC : ST7701S
- (4) Polarizer Mode : Transmissive/ Negative
- (5) Operating Temp : -20~70 °C
- (6) Storage Temp : -30~80 °C
- (7) Unmarker Tolerance: ±0.20
- (8) Protection : ROHS

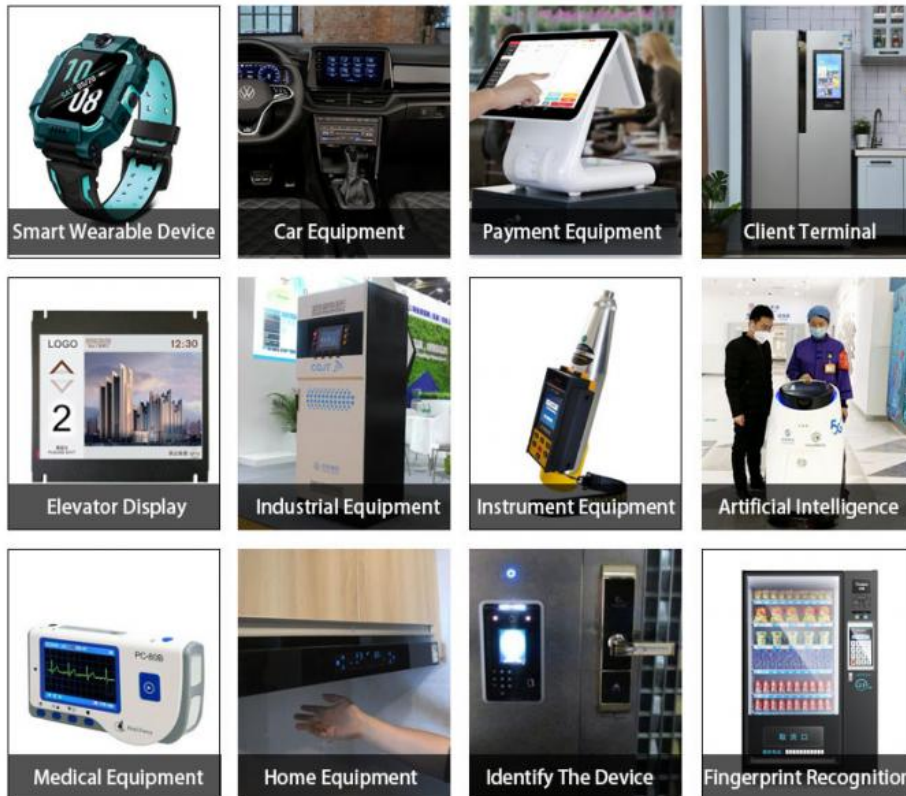


4. Quick Detail

- * LCM name: Capacitive Touch IPS LCD Display 480x480 Resolution 2.1"TFT LCD With ST7701S
- * Model: CH210WV01A-CT
- * Lcm Size.: 2.1 inch
- * With touch panel or not: Yes
- * Touch type: Capacitive Touch
- * Display Type: 2.1inch TFT+CTP

- * Display colors: 16.7 M
- * Number of Dots: 480*480 dots
- * TFT Dot Pitch : 0.0111(W)×0.0111(H) cm
- * Viewing Angle: 80/80/80/80
- * Driver IC: ST7701
- * Display mode: IPS/ Transmission/ NormallyBlack
- * Module size: $\phi 7.18 \times 0.365$ (T) cm
- * TFT Active Area: $\phi 5.328$ cm
- * Luminance: 300 cd/m²
- * Contrast: 800 : 1
- * TFT Interface Type: 3line SPI + 18bit RGB
- * CTP Interface Type: I2C
- * Pin Number: 40 pins
- * Backlight type and color: LED backlight/white
- Backlight: 4 LED parallel

5. Application



7. FAQ

- (1) Fully / Semi-automated production line ensure the best quality.
- (2) Custom Design,can specially meet your needs.
- (3) Fast Delivery ,about 20 days for lead time
- (4) Samples available on request; Small MOQ orders can be negotiated.
- (5) Provide best pre-sale and after-sale service to you.

If you have more question , Please contact us now, we look forward to communicating with you !



Shenzhen ChengHao Optoelectronic Co., Ltd.



+86 755-27806536



add@chenghaolcm.com



chenghaolcd.com

7th floor, building C5, Hengfeng Industrial City, Hangcheng street, Bao'an District, Shenzhen